

O'Reilly Auto Retail Center

2211 East Sims Way | Port Townsend, WA



FOR LEASE High Exposure Retail/Office Space

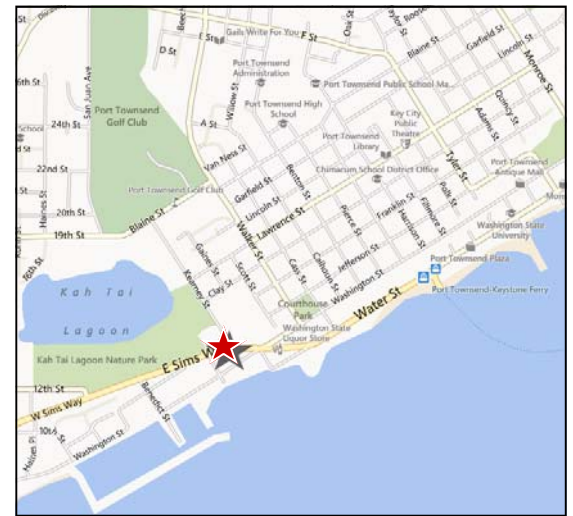
LEASE DETAILS

Suite 2211 2,820 SF

Lease Rate \$15/SF/YR, NNN

PROPERTY HIGHLIGHTS

- Great frontage on main arterial into Port Townsend
- Built in 2003, complete renovation in 2010
- Ample parking (3/1,000 ratio)
- High traffic location (19,000+ cpd)
- Ideal space for service retail or professional office user
- Current tenants include O'Reilly Auto Parts, Radio Shack and 123 Thai Food



For more information, contact:

Casey Sheehan

253.395.5067

csheehan@neilwalter.com

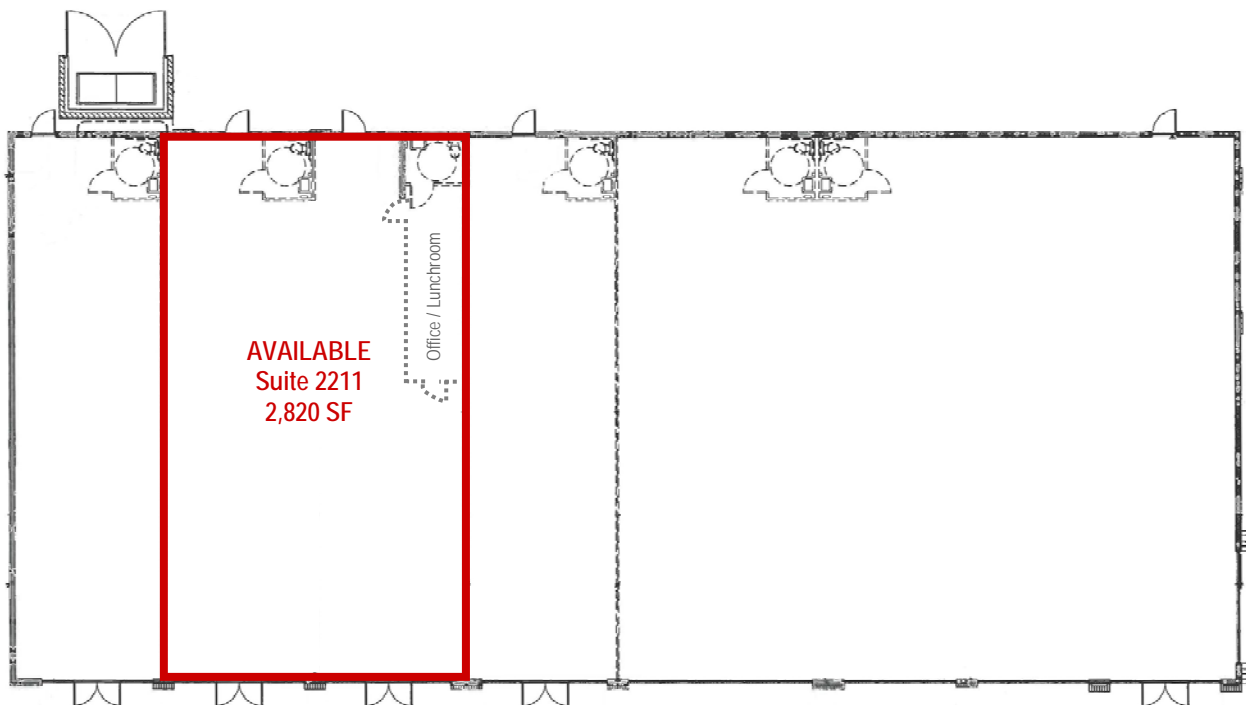


Neil Walter Company
Suite C106
19625 62nd Ave S
Kent, WA 98032

www.neilwalter.com

O'Reilly Auto Retail Center

2211 East Sims Way | Port Townsend, WA



For more information, contact:

Casey Sheehan

253.395.5067

csheehan@neilwalter.com