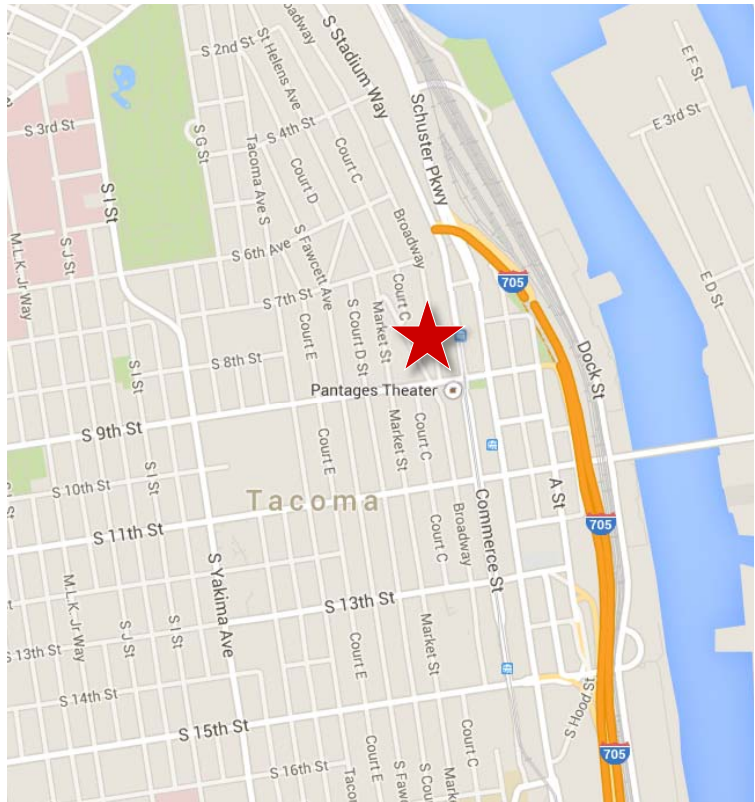


# Mecca Building



## Office Space For Lease With Parking Available!

- Available:** 3,389 SF to 5,520 SF  
**Lease Rate:** \$16.00/SF/YR, Modified Gross
- Layout includes 5 privates, conference room, open bullpen area, reception and kitchen
  - Tenant pays electricity, janitorial, and trash



## Property and Location Features

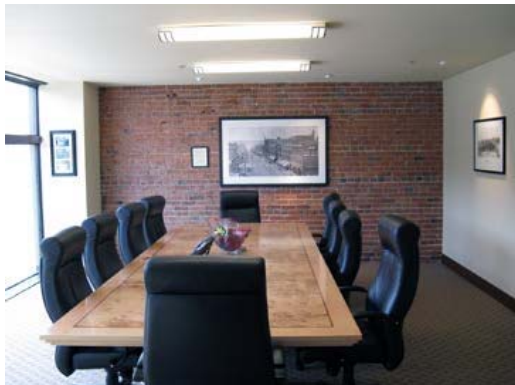
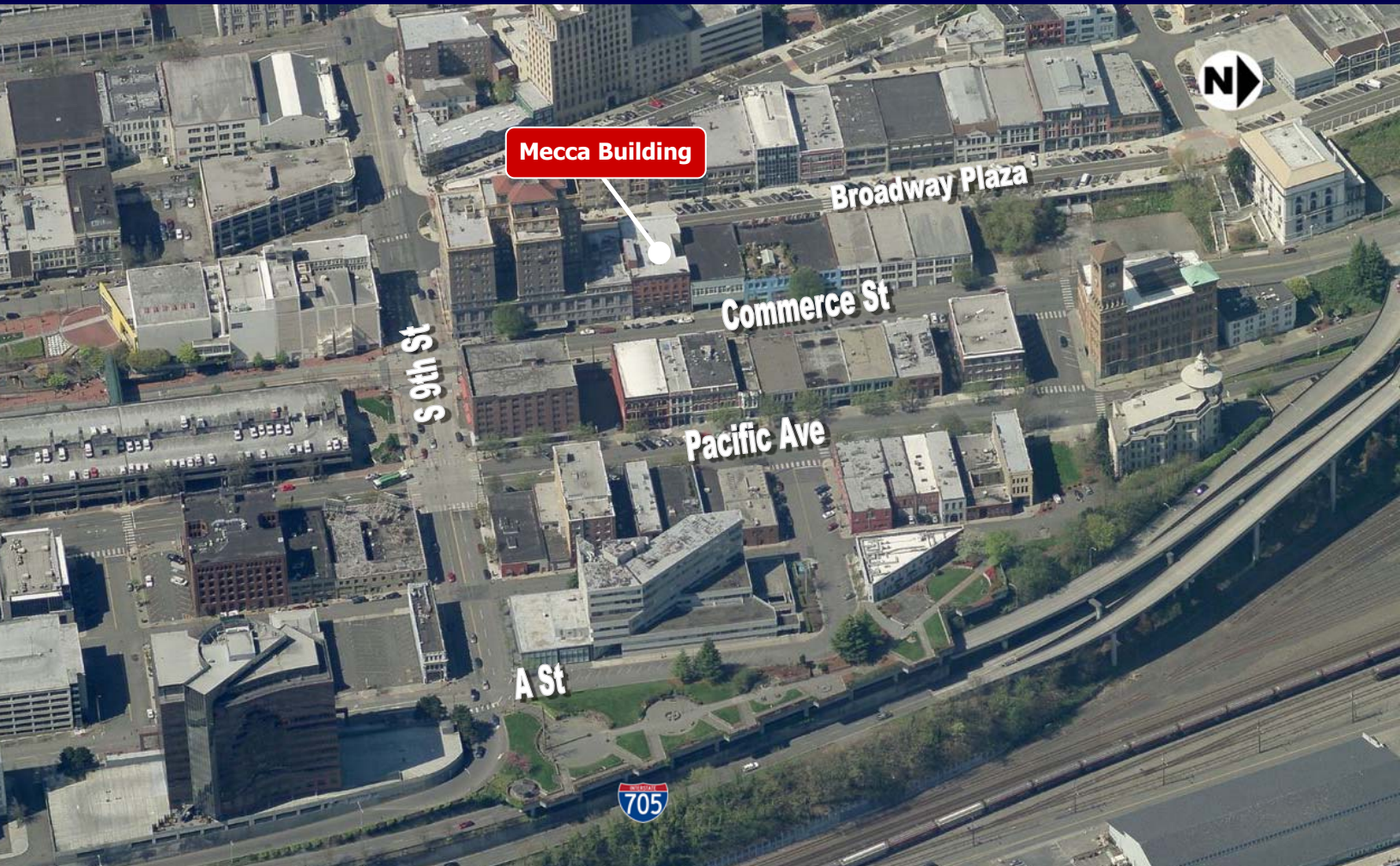
- Historic Tacoma CBD office building
- Professional space with quality finishes
- Lots of natural light with high ceilings
- New elevator
- Well located in Tacoma's theater district
- Prime downtown location on Link Light Rail stop
- Access from either Broadway or Commerce Street
- Over 12,000 cars per day at 9th & Commerce Street

For more information, please contact:

**Briana Hickey**  
253.779.2424  
bhickey@neilwalter.com

**Nick Ratzke**  
253.779.2414  
nratzke@neilwalter.com

# Mecca Building



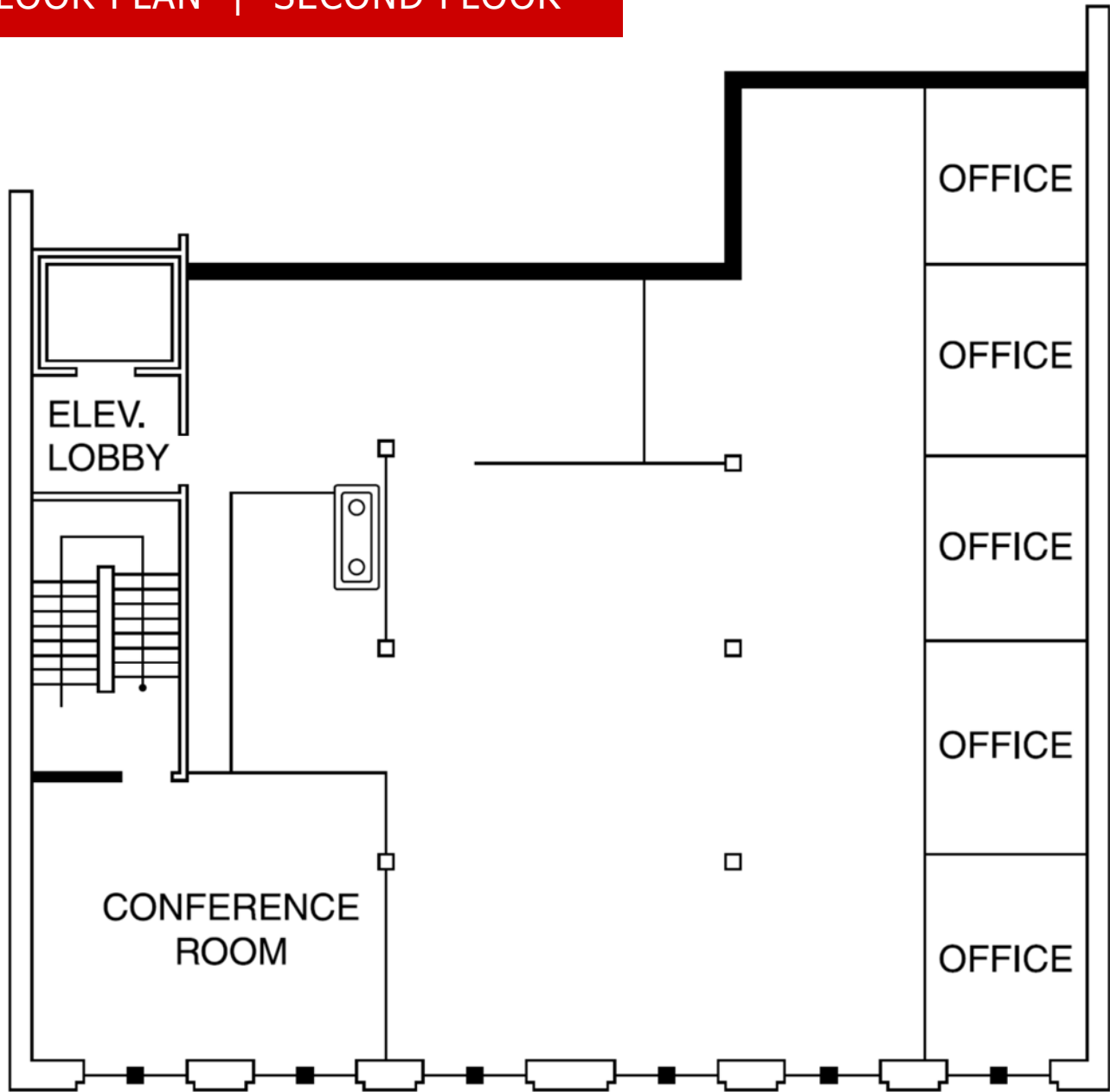
For more information, please contact:

Briana Hickey  
253.779.2424  
bhickey@neilwalter.com

Nick Ratzke  
253.779.2414  
nratzke@neilwalter.com

# Mecca Building

## FLOOR PLAN | SECOND FLOOR



For more information, please contact:

Briana Hickey  
253.779.2424  
bhickey@neilwalter.com

Nick Ratzke  
253.779.2414  
nratzke@neilwalter.com