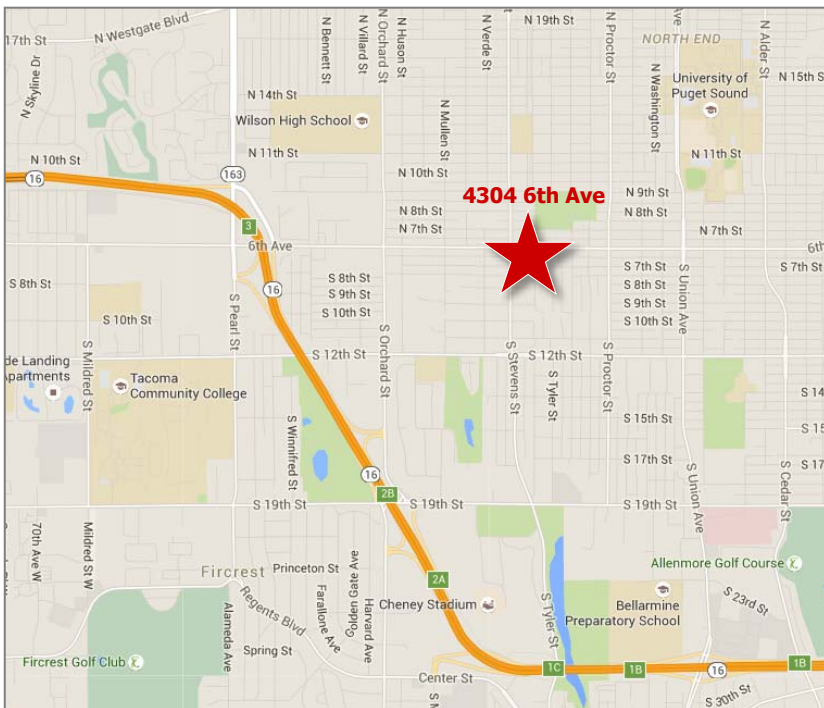


# 6th Avenue Office



## FOR LEASE: Move-in Ready Office

- 2,270 SF available (divisible by floor)
- Two-story office building
- Short-term lease available
- Ample parking (4/1,000) in paved lot located behind the building
- Great central location just one block off of 6th Ave & Stevens
- Over 16,000 cars per day on 6th Ave
- **Lease Rate:** \$14.00/SF/YR, Gross

## DEMOGRAPHICS

	1 Mile	3 Mile	5 Mile
2015 Total Population	15,700	117,477	214,973
Median Household Inc	\$57,962	\$50,487	\$53,121

For more information, contact:

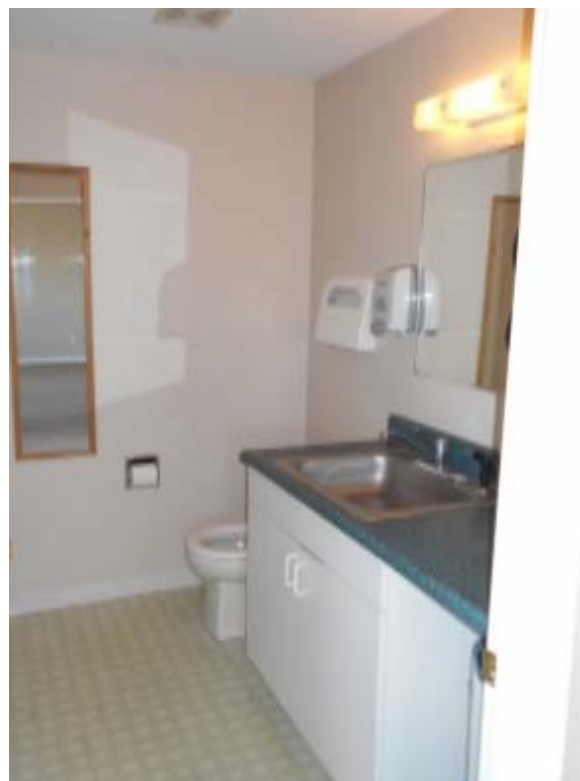
Aaron Rosen  
253.779.2418  
arosen@neilwalter.com

Trevor Kovich  
253.779.2408  
tkovich@neilwalter.com





# 6th Avenue Office



## DOWNSTAIRS FLOOR PLAN

