

FOR LEASE

WESTGATE TERRACE OFFICE PARK

2102 N PEARL ST | TACOMA, WA

1,033 SF
AVAILABLE

PROFESSIONAL SUBURBAN OFFICE SPACE



LEASE INFO

Suite D-401: 1,033 SF
 Lease Rate: \$22.00/SF/YR
 Lease Type: Modified Gross

PROPERTY FEATURES

Professional Office Park

Excellent Access to all of Pierce County

Exceptional Exposure

Parking Ample

Professionally Managed

All utilities included



DEBBIE GALLINATTI
 253.779.2430
 dgallinatti@neilwalter.com

DENISE DAVIS
 253.779.2423
 ddavis@neilwalter.com

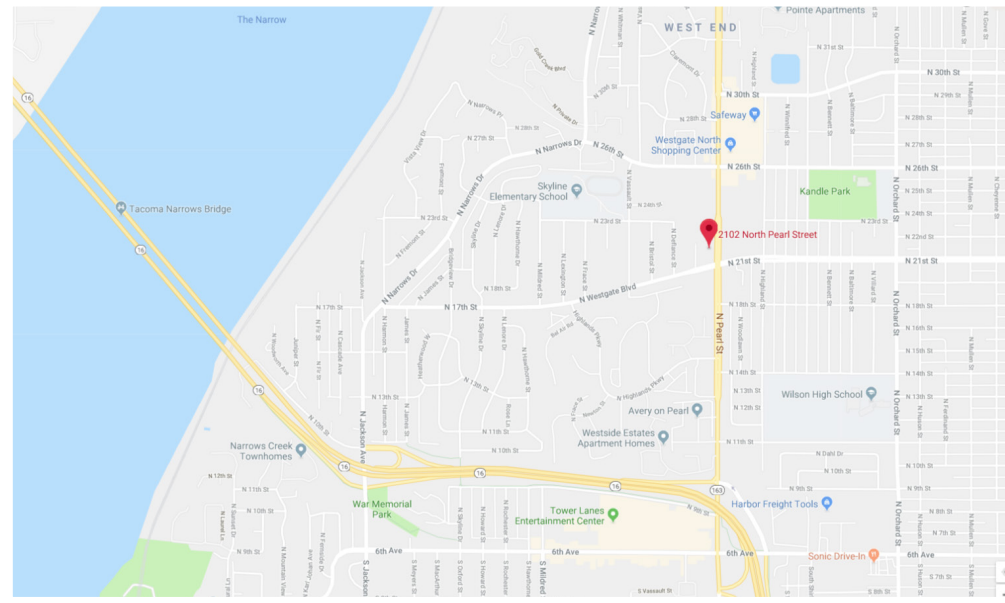
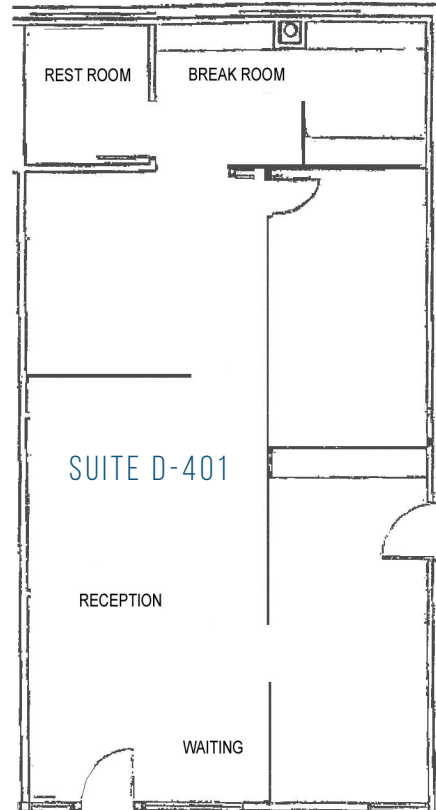
All square footage references are approximate. The information contained herein is from sources deemed reliable. Prospective Buyer or Tenant should conduct an independent investigation and verification of all matters.

WESTGATE TERRACE OFFICE PARK



2102 N PEARL ST | TACOMA, WA

NEIL WALTER
COMPANY



DEBBIE GALLINATTI
253.779.2430
dgallinatti@neilwalter.com

DENISE DAVIS
253.779.2423
ddavis@neilwalter.com

All square footage references are approximate. The information contained herein is from sources deemed reliable. It is provided without representation, warranty or guarantee, expressed or implied as to its accuracy. Prospective Buyer or Tenant should conduct an independent investigation of all matters.

1940 East D St #100
Tacoma, WA 98421
253.779.8400
www.neilwalter.com