

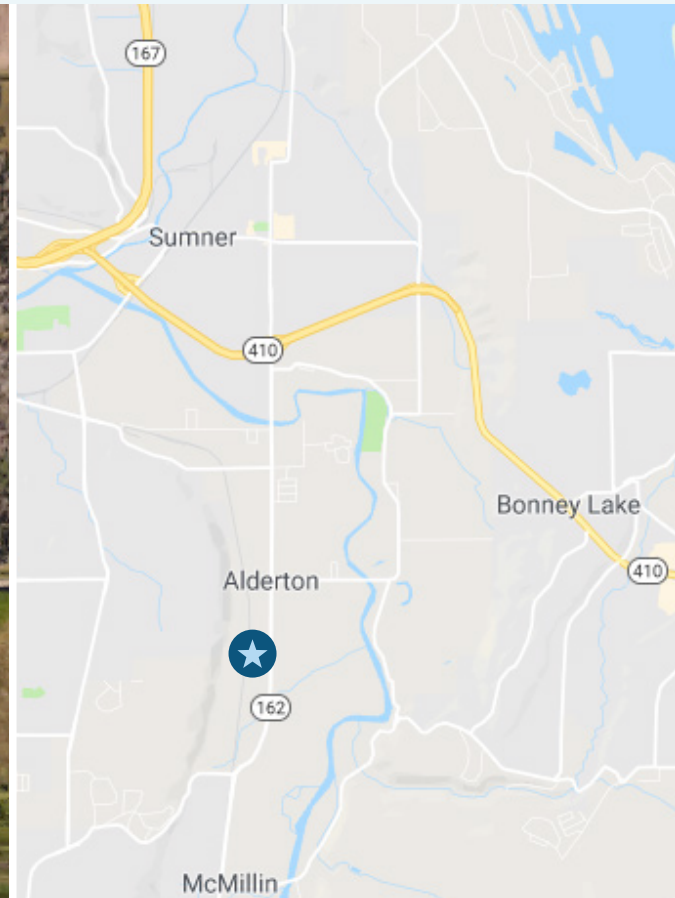
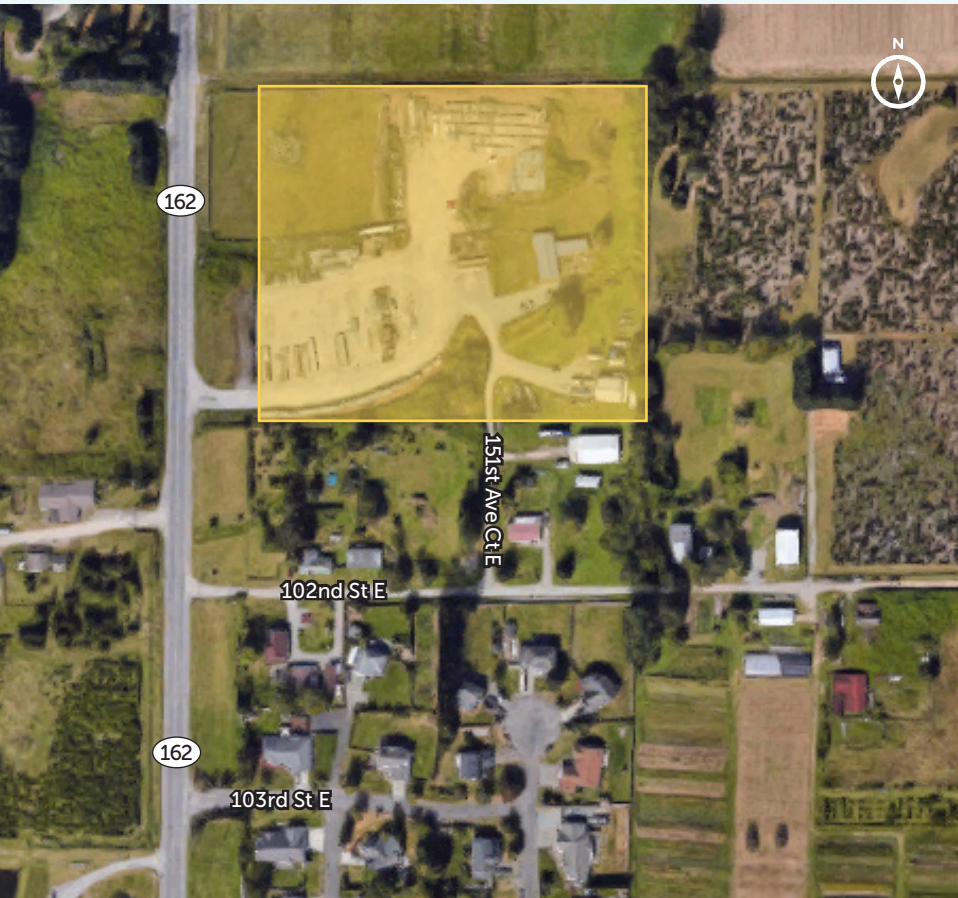
ORTING HWY TRUCK YARD

10111 STATE ROUTE 162 E | PUYALLUP, WA

FOR SALE
\$1,800,000

6.6 ACRES

RARE TRUCK YARD WITH SHOP



PROPERTY HIGHLIGHTS

- Small shop on site
- Seller prefer carrying note after sale
- Two 14' roll up doors
- Existing CUP permit for truck yard
- Fenced and graveled
- Located approximately two miles from Sumner & Hwy-167

All square footage references are approximate. The information contained herein is from sources deemed reliable. It is provided without representation, warranty or guarantee, expressed or implied as to its accuracy. Prospective Buyer or Tenant should conduct an independent investigation of all matters.



THERON MEIER
253.779.2426
tmeier@neilwalter.com

HARVEY WIDMAN
253.531.4515
myrvalharvey@msn.com

Realty
Connections