

PARK PLACE BUILDING

711 COURT A | TACOMA, WA

SUITE 200

OFFICE SPACE
FOR LEASE



PROPERTY FEATURES



Conveniently located
in the heart of the
downtown core



2nd story office
facing 8th & Court A



Efficient layout with
private offices &
reception area



One reserved parking
space available



Easy Access to
I-705 and I-5



Located near
dining and shopping

LEASE INFO

Size: 1,100 SF

Rate: \$21.00/SF/YR, Full Service



BRIANA HICKEY

253.779.2424

bhickey@neilwalter.com

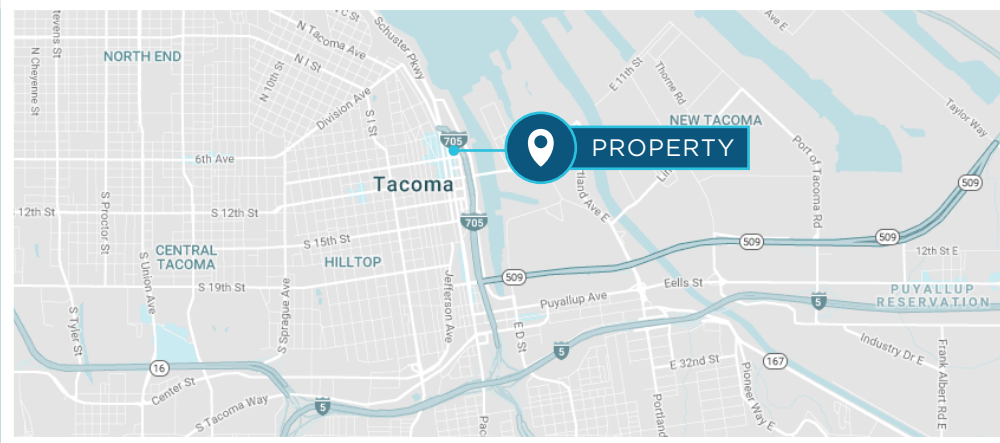
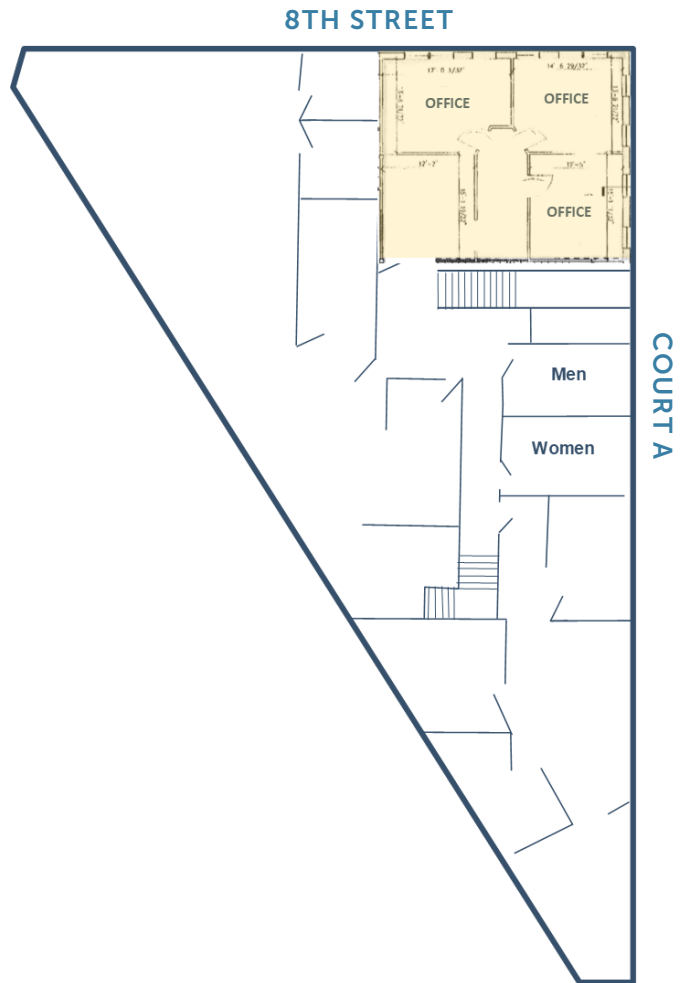
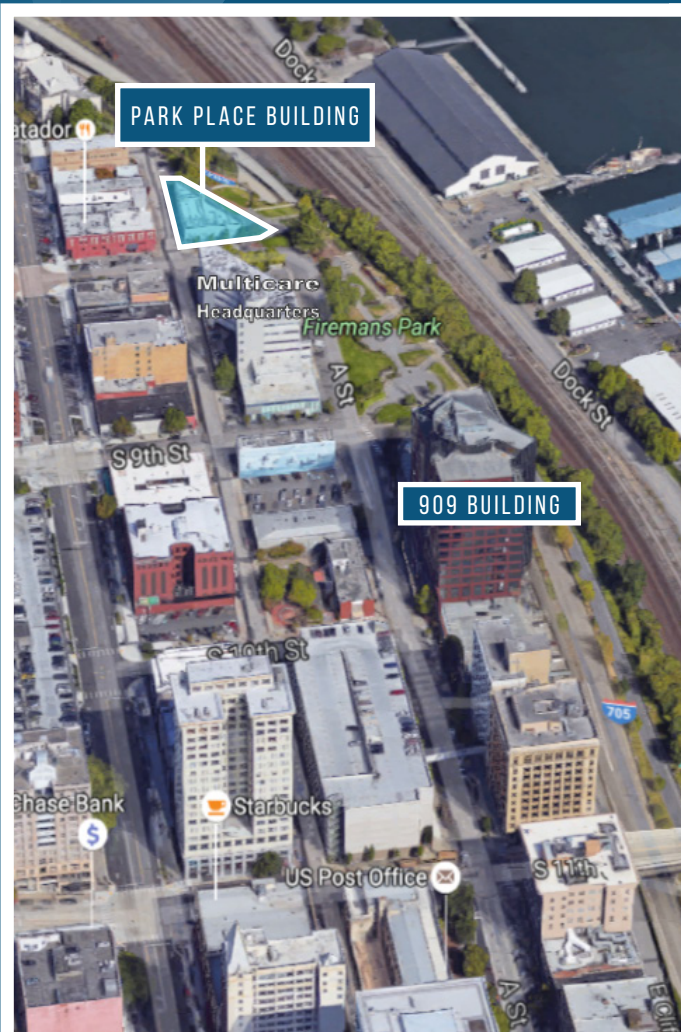
All square footage references are approximate. The information contained herein is from sources deemed reliable. Prospective Buyer or Tenant should conduct an independent investigation and verification of all matters.

PARK PLACE BUILDING



711 COURT A | TACOMA, WA

NEIL WALTER
COMPANY



All square footage references are approximate. The information contained herein is from sources deemed reliable. It is provided without representation, warranty or guarantee, expressed or implied as to its accuracy. Prospective Buyer or Tenant should conduct an independent investigation of all matters.

BRIANA HICKEY
253.779.2424
bhickey@neilwalter.com

1940 East D St #100
Tacoma, WA 98421
253.779.8400
www.neilwalter.com