

WOODWARD & WHITE MFG

1129 ST. PAUL AVE | TACOMA, WA

FOR LEASE

6,600 SF
AVAILABLE



LEASE INFO

Available:	6,600 SF Total
Warehouse:	6,000 SF
Office:	600 SF
Loading:	1 Grade-level door
Clear Height:	12' - 18'
Rates:	Call for Rate/Terms!

PROPERTY INFO

- Building could be used for light manufacturing/distribution/shop space
- I-502 legal building, processing areas are built out
- Open warehouse has two bridge cranes
- New roof 2018
- Rent/Tenant improvement concessions negotiable
- Former machine shop / manufacturing
- 3-phase, 277/480 power - Plenty of power is available per Tacoma Power



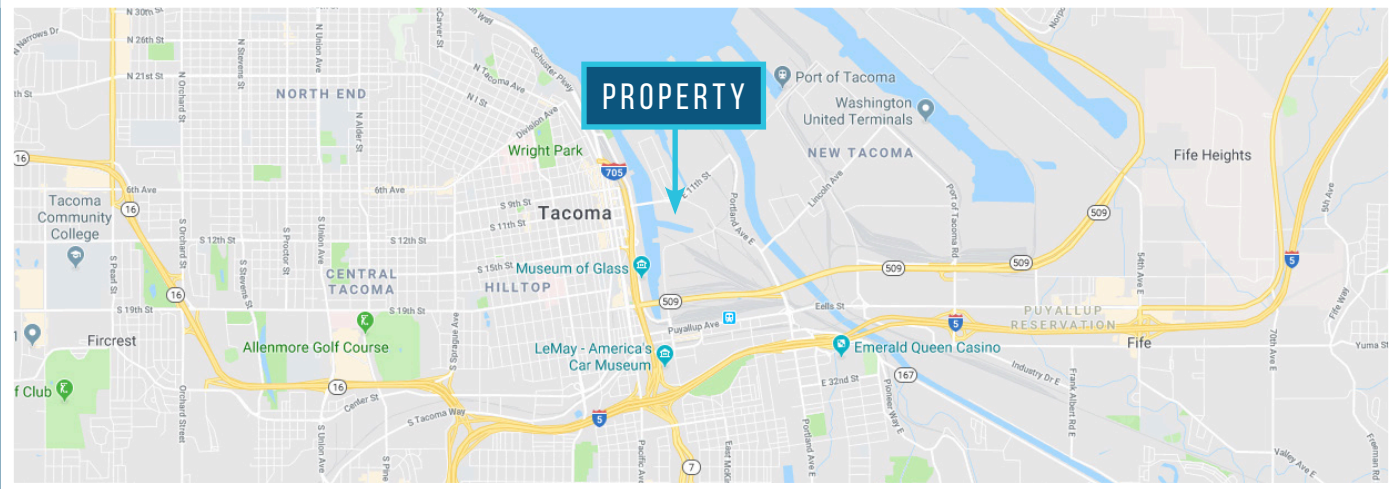
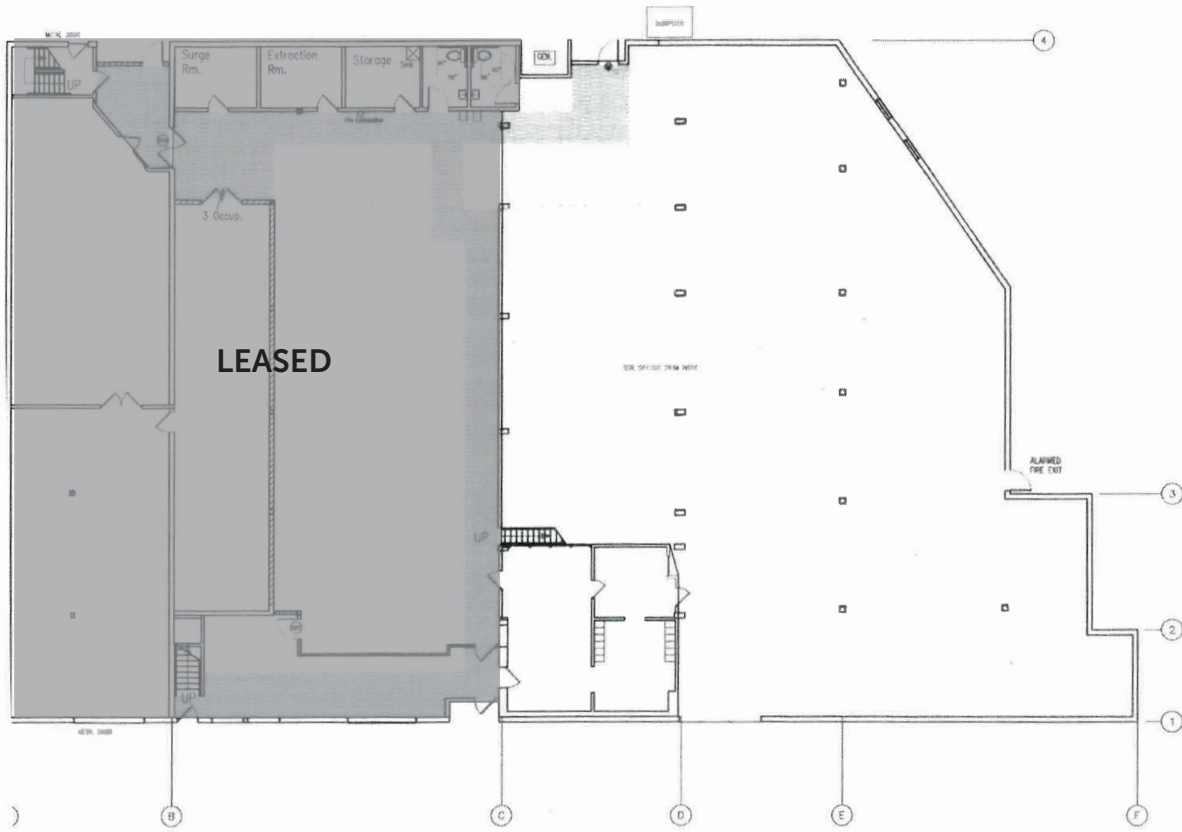
TIM PAVOLKA
253.606.7610
tpavolka@neilwalter.com

WOODWARD & WHITE MFG



1129 ST. PAUL AVE | TACOMA, WA

NEIL WALTER
COMPANY



TIM PAVOLKA
253.606.7610
tpavolka@neilwalter.com

All square footage references are approximate.
The information contained herein is from sources deemed reliable. It is provided without representation, warranty or guarantee, expressed or implied as to its accuracy. Prospective Buyer or Tenant should conduct an independent investigation of all matters.

1940 East D St #100
Tacoma, WA 98421

253.779.8400
www.neilwalter.com