

CENTENNIAL PLACE II

2121 S STATE ST | TACOMA, WA

FOR LEASE

5,000 - 9,671 SF
CLASS A OFFICE SPACE

NEW OWNERSHIP | MAJOR BUILDING UPGRADES UNDERWAY



LEASE INFO

Size: 9,671 SF Office
Lease Rate: \$22.50/RSF
Lease Type: Modified Gross

Ownership willing to space
pocket for smaller tenants
5,000 SF minimum

PROPERTY FEATURES

Convenient central
location

Ample surface
parking

Underground
secure parking

Excellent freeway
access (both I-5
and Hwy-16)

Large contiguous
floor plates

Energy Star rated

W NEIL WALTER
COMPANY

LA LEE &
ASSOCIATES

ERIC CEDERSTRAND
253.779.2428
ecederstrand@neilwalter.com

TOM BROWN
253.444.3024
tbrown@lee-associates.com

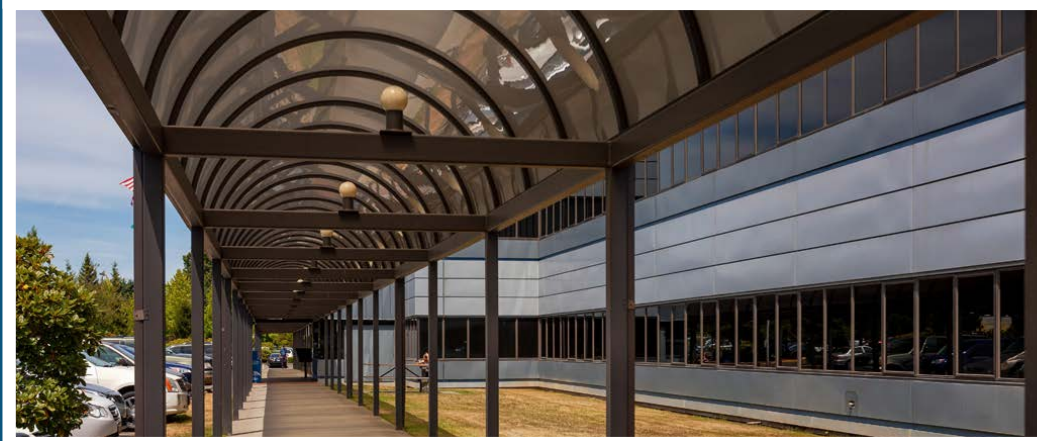
All square footage references are approximate. The information contained herein is from sources deemed reliable. Prospective Buyer or Tenant should conduct an independent investigation and verification of all matters.

CENTENNIAL PLACE II



2121 S STATE ST | TACOMA, WA

NEIL WALTER
COMPANY



All square footage references are approximate. The information contained herein is from sources deemed reliable. It is provided without representation, warranty or guarantee, expressed or implied as to its accuracy. Prospective Buyer or Tenant should conduct an independent investigation of all matters.

ERIC CEDERSTRAND
253 779 2428
ecederstrand@neilwalter.com

TOM BROWN
253 444 3024
tbrown@lee-associates.com

1940 East D St #100
Tacoma, WA 98421

253.779.8400
www.neilwalter.com



CENTENNIAL PLACE II



2121 S STATE ST | TACOMA, WA

NEIL WALTER
COMPANY

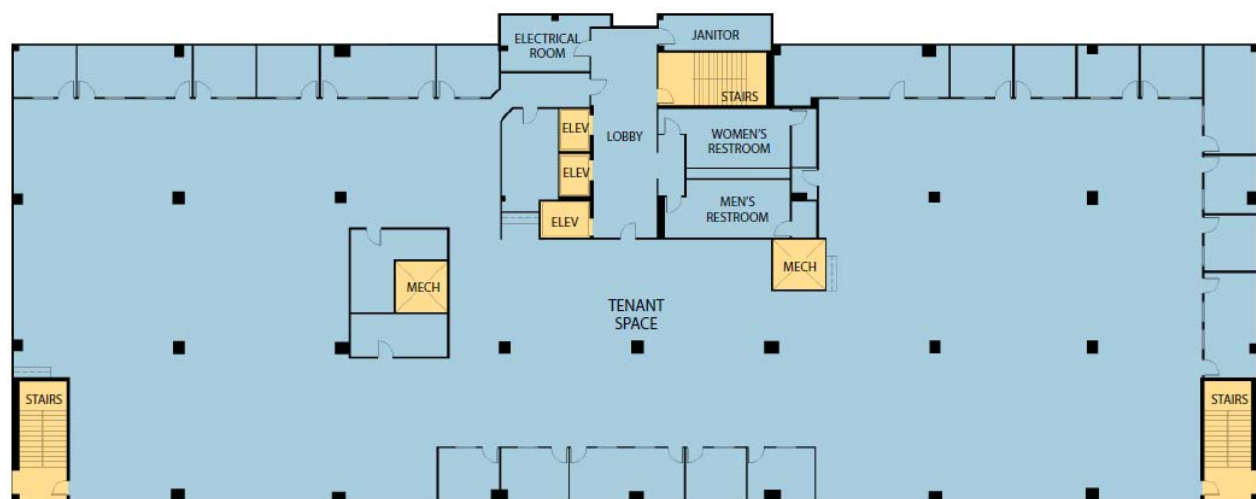
First Floor Plan

±9,671 RSF Available



Second Floor Plan

Fully Leased



ERIC CEDERSTRAND
253 779 2428
ecederstrand@neilwalter.com

TOM BROWN
253 444 3024
tbrown@lee-associates.com

1940 East D St #100
Tacoma, WA 98421

253.779.8400
www.neilwalter.com

