

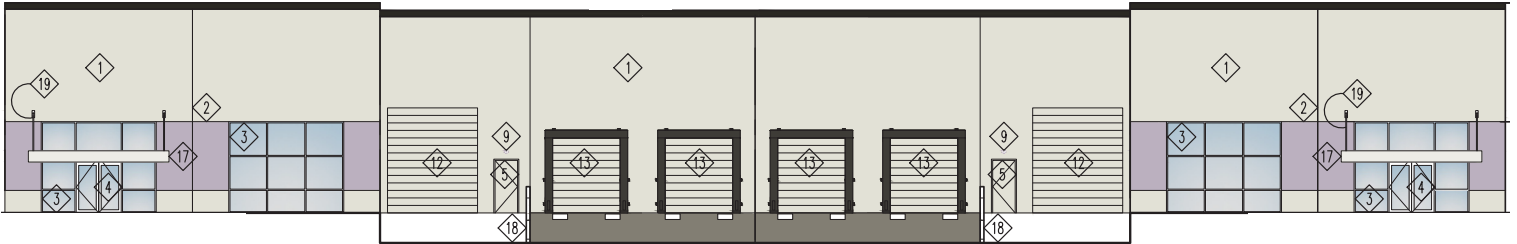
LYDIG BUSINESS PARK

828 VALENTINE AVE SE | PACIFIC, WA 98047

FOR LEASE

AVAILABLE
MAY 2020

NEW CONSTRUCTION • BUILD-TO-SUIT • CLASS A INDUSTRIAL SPACE



PROPERTY INFO

Size: ±20,000 SF

Divisible: 10,000 SF

Lease Rate: \$0.75/SF Shell
\$1.10/SF BTS Office

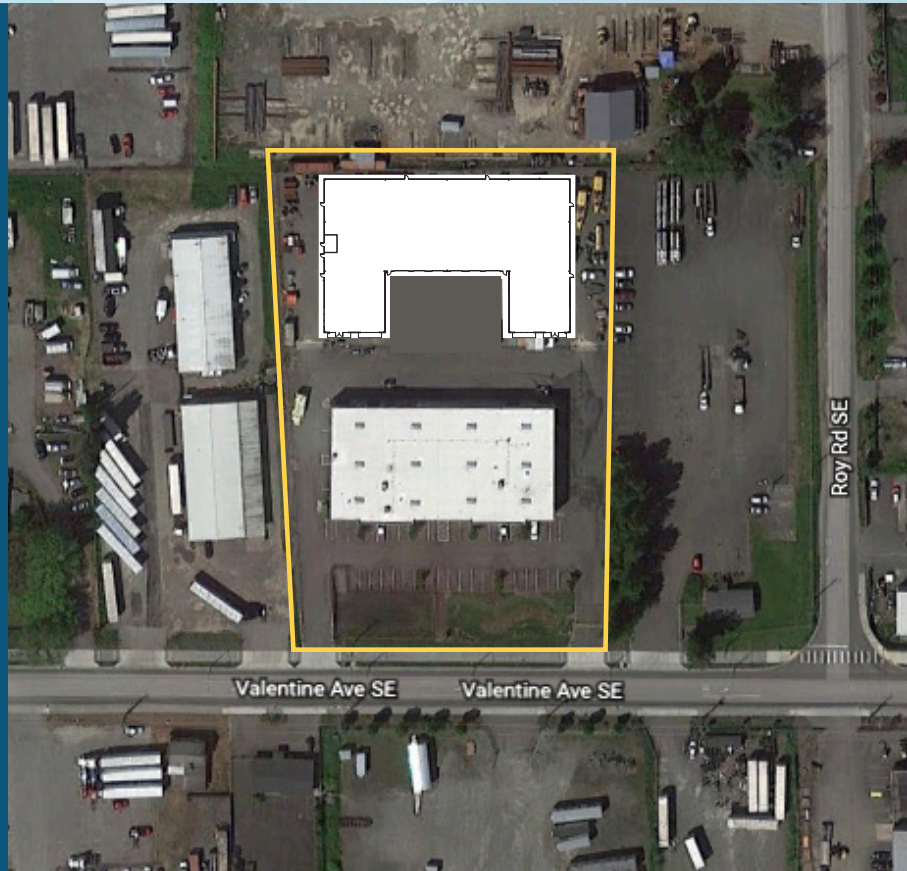
Lease Type: NNN

Loading: 4 Dock-high doors
2 Grade-level doors

Clear Height: 24'

Features: Concrete tilt-up
construction, sprinklered

Available: May 2020



MIKE ROY
206 787 1470
mroy@neilwalter.com

KERMIT JORGENSEN
206 787 1475
kjorgensen@neilwalter.com

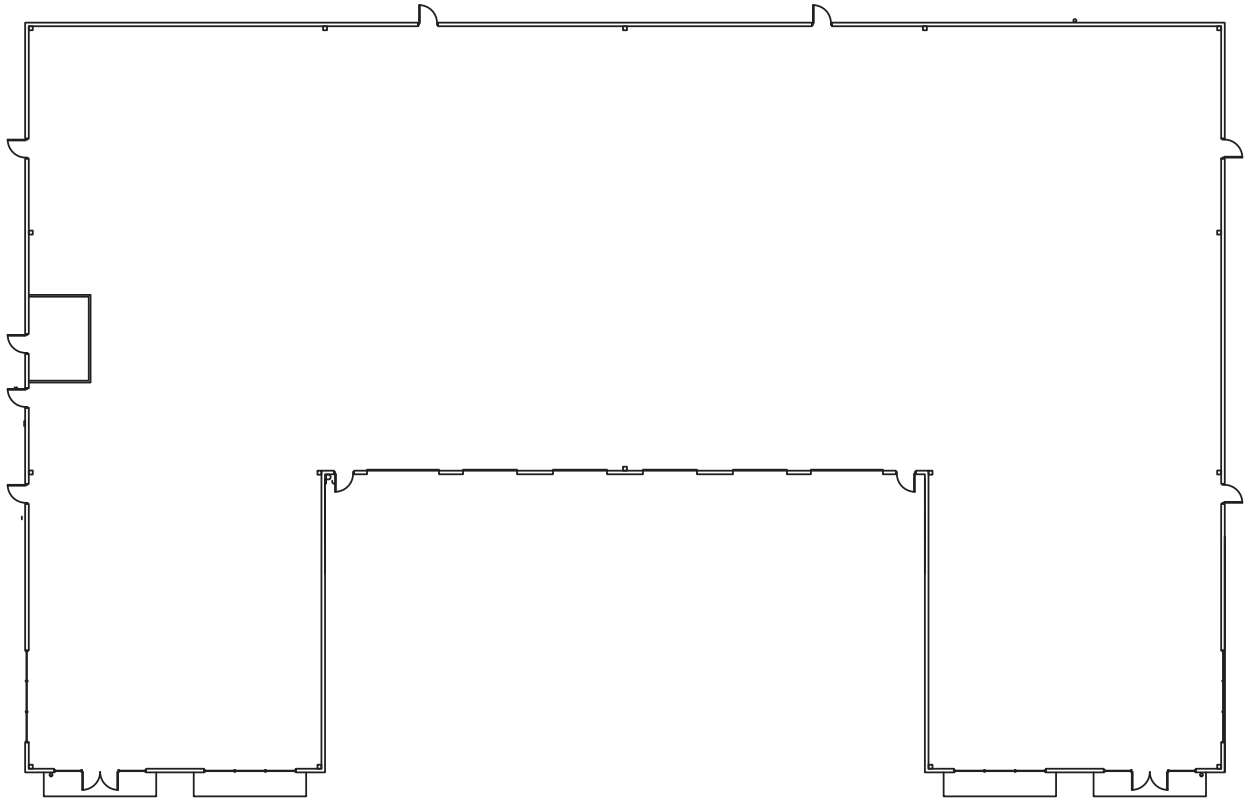
LYDIG BUSINESS PARK



828 VALENTINE AVE SE | PACIFIC, WA 98047

NEIL WALTER
COMPANY

FLOOR PLAN



MIKE ROY
206 787 1470
mroy@neilwalter.com

KERMIT JORGENSEN
206 787 1475
kjorgensen@neilwalter.com

550 S Michigan St
Seattle, WA 98108
206.787.1800
www.neilwalter.com