

# TORQUAY MEDICAL BUILDING

FOR LEASE - 3 UNITS

34616 11TH PLACE SOUTH | FEDERAL WAY, WA



## LEASE INFORMATION

<b>Suite 3:</b>	2,477 RSF
<b>Suite 2:</b>	1,268 RSF
<b>Suite 2A:</b>	750 RSF
<b>Lease Rate:</b>	Call Broker
<b>Lease Type:</b>	Modified Gross

## PROPERTY HIGHLIGHTS

- Fully built-out medical office
- Quality construction with lots of natural light
- Private, park-like setting
- Elevator served
- Ample Parking
- Excellent location near medical community



**MAX WHITE**  
**206.787.1463**  
mwhite@neilwalter.com

All information references in this document are approximate. The information contained herein is contained from sources deemed reliable. It is provided without representation, warranty, or guarantee, expressed or implied as to accuracy. Prospective buyer or tenant should conduct its own independent investigation relating to the property, government codes and regulations, allowed uses, and all other matters, regardless of whether they are referred to or contained in this document.

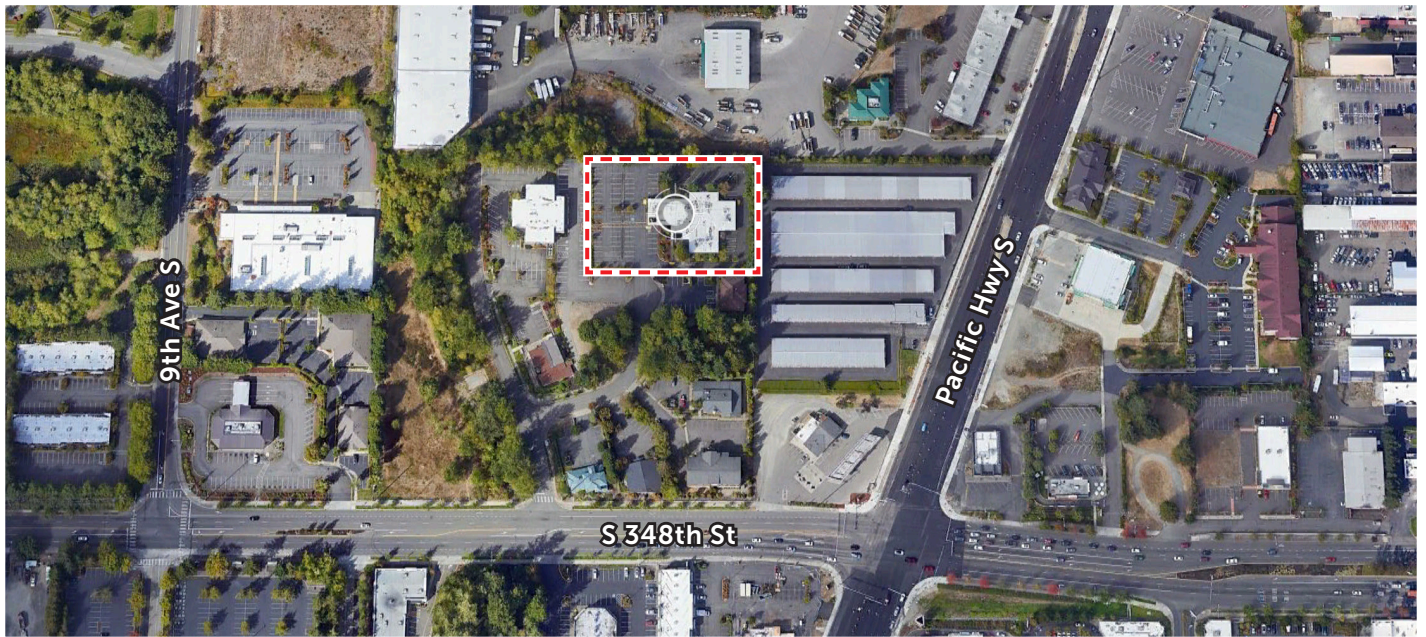
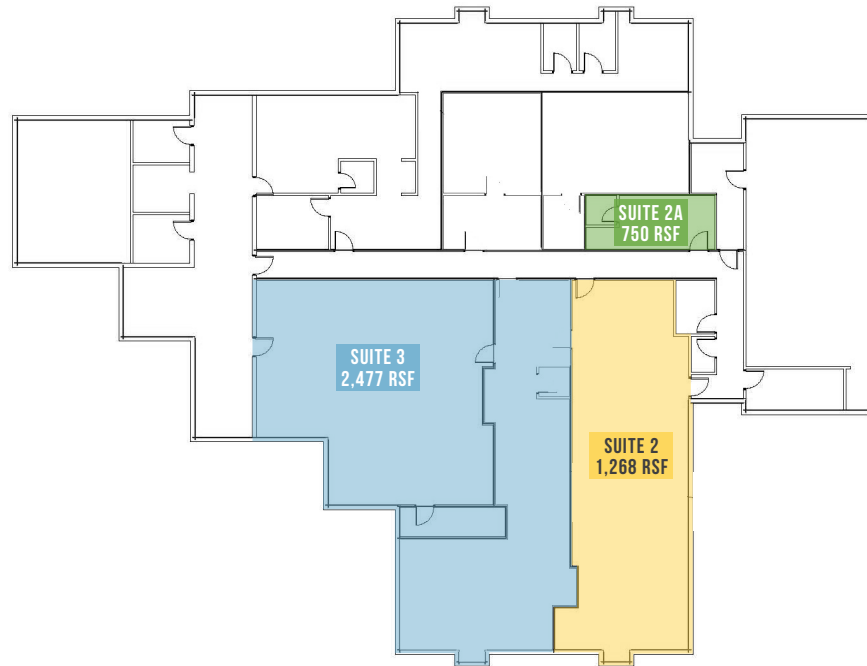


# TORQUAY MEDICAL BUILDING

34616 11TH PLACE SOUTH | FEDERAL WAY, WA



## LOWER LEVEL



**MAX WHITE**  
206.787.1463

[mwhite@neilwalter.com](mailto:mwhite@neilwalter.com)

550 S Michigan St  
Seattle, WA 98108  
206.787.1800  
[www.neilwalter.com](http://www.neilwalter.com)

All information references in this document are approximate. The information contained herein is contained from sources deemed reliable. It is provided without representation, warranty, or guarantee, expressed or implied as to accuracy. Prospective buyer or tenant should conduct its own independent investigation relating to the property, government codes and regulations, allowed uses, and all other matters, regardless of whether they are referred to or contained in this document.