

FOR LEASE

# 25 HANFORD STREET

SEATTLE, WA 98134



NEIL WALTER  
COMPANY

BUILD-TO-SUIT OFFICE UP TO 4,743 SF



CLICK FOR VIRTUAL TOUR



## PROPERTY FEATURES



Excellent truck maneuvering and parking with close-in location



Approximately 2 miles south of downtown Seattle



Directly adjacent to the Port of Seattle

## SUITE 25

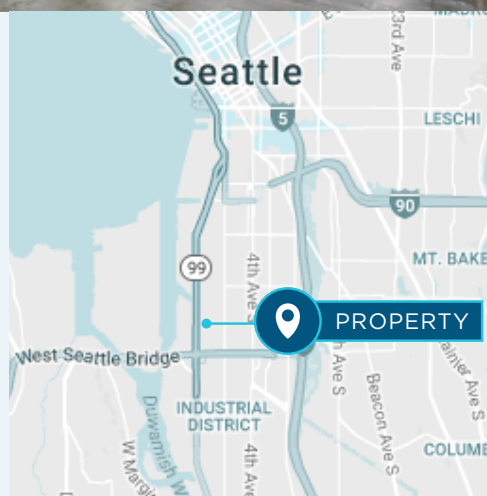
**Size:** 16,231 SF (Total)  
Up to 4,743 SF (Office)

**Loading:** 3 Dock-high doors

**Clear Height:** 15'

**Lease Rate:** \$1.05/SF Shell  
\$1.00/SF Office

**NNN Rate:** \$0.244/SF



KEVIN SKILLESTAD

206.787.1460

kskillestad@neilwalter.com



All square footage references are approximate. The information contained herein is from sources deemed reliable. Prospective Buyer or Tenant should conduct an independent investigation and verification of all matters.

# 25 S HANFORD STREET

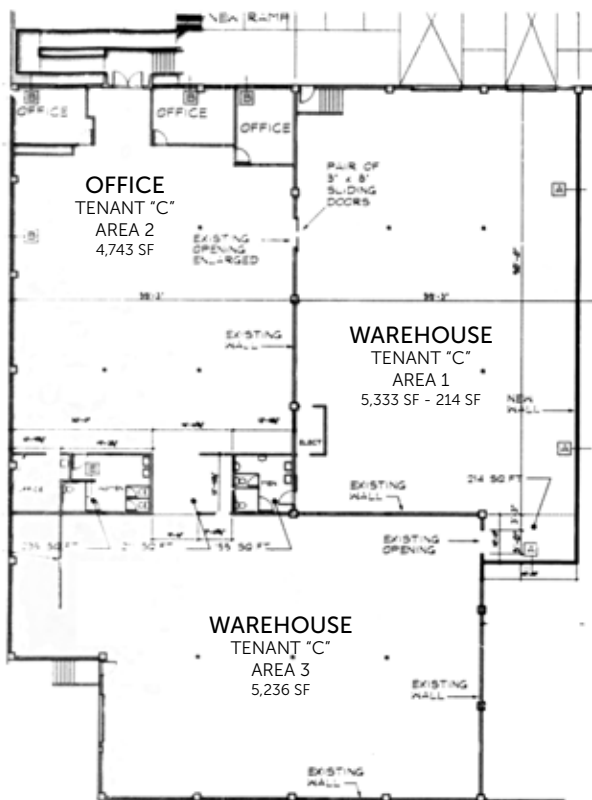


SEATTLE, WA 98134

NEIL WALTER  
COMPANY



**Suite 25**  
16,231 SF  
Up to 4,743 SF Office



**KEVIN SKILLESTAD**  
206.787.1460  
kskillestad@neilwalter.com

550 S Michigan St  
Seattle, WA 98108  
206.787.1800  
www.neilwalter.com