

1ST & LUCILE BUILDING

5501-5511 1ST AVE S | SEATTLE, WA 98108

FOR LEASE

± 23,388 SF
AVAILABLE



PROPERTY DETAILS

Available Size:	± 23,388 SF Total (Divisible)
Office Size:	Up To 6,000 SF Available
Building Footprint:	27,000 SF
Land Size:	39,801 SF (0.91 acres)
Lease Rate:	Call Broker For Rates
Comment:	Short Term Lease Considered

PROPERTY FEATURES



22' Clear Height



4 Dock-high Doors



Built in 1970



Great Frontage on 1st Ave



JIM HONAN
206.787.1464
jhonan@neilwalter.com

KEVIN SKILLESTAD
206.715.0757
kevin.skillestad@kbcadvisors.com



All information references in this document are approximate. The information contained herein is contained from sources deemed reliable. It is provided without representation, warranty, or guarantee, expressed or implied as to accuracy. Prospective buyer or tenant should conduct its own independent investigation relating to the property, government codes and regulations, allowed uses, and all other matters, regardless of whether they are referred to or contained in this document.

1ST & LUCILE BUILDING

5501-5511 1ST AVE S | SEATTLE, WA 98108

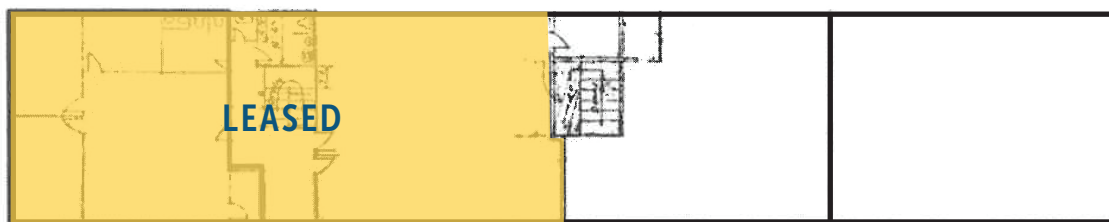


NEIL WALTER
C O M P A N Y

FIRST LEVEL



SECOND LEVEL



JIM HONAN
206.787.1464

jhonan@neilwalter.com

KEVIN SKILLESTAD
206.715.0757

kevin.skillestad@kbcadvisors.com

206.787.1800
www.neilwalter.com

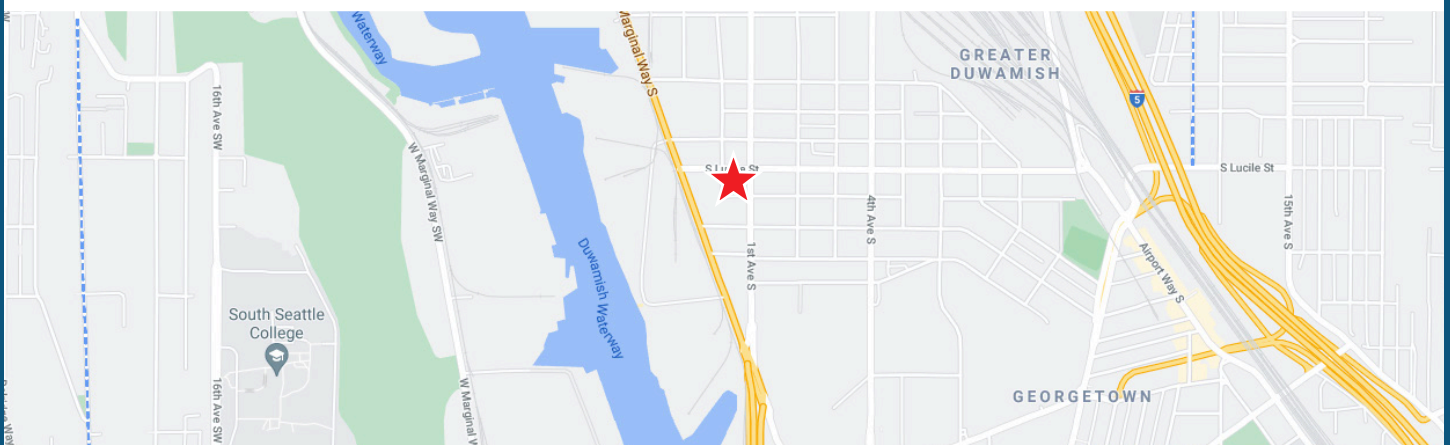
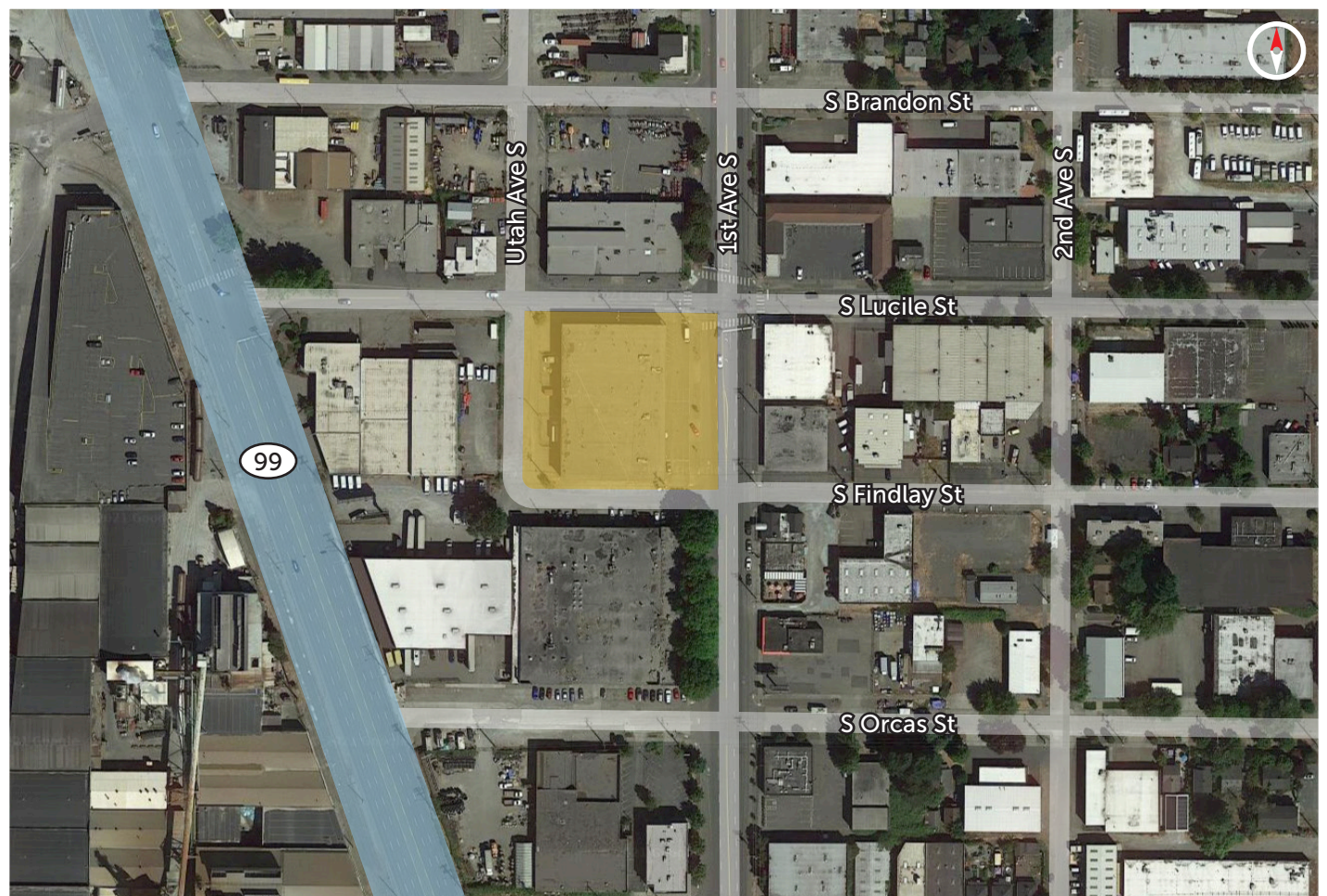
550 S Michigan St
Seattle, WA 98108

1ST & LUCILE BUILDING

5501-5511 1ST AVE S | SEATTLE, WA 98108



NEIL WALTER
COMPANY



JIM HONAN
206.787.1464

jhonan@neilwalter.com

KEVIN SKILLESTAD
206.715.0757

kevin.skillestad@kbcadvisors.com

206.787.1800
www.neilwalter.com

550 S Michigan St
Seattle, WA 98108

All information references in this document are approximate. The information contained herein is contained from sources deemed reliable. It is provided without representation, warranty, or guarantee, expressed or implied as to accuracy. Prospective buyer or tenant should conduct its own independent investigation relating to the property, government codes and regulations, allowed uses, and all other matters, regardless of whether they are referred to or contained in this document.