

# FLEX 194

FOR LEASE: 1 UNIT AVAILABLE - 7,100 SF

5872 S 194TH STREET | KENT, WA 98032



## PROPERTY FEATURES



High Image Office/  
Flex Building



Abundant Parking



Great Freeway Access

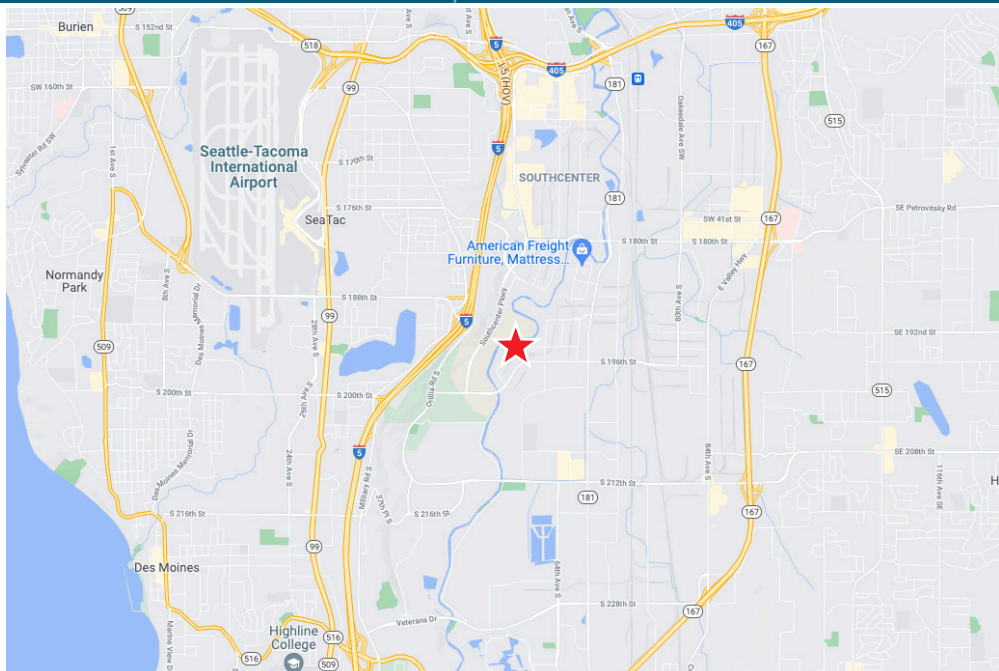
## LEASE INFORMATION

**Suite 5872:** 7,100 SF Total  
6,300 SF Office  
1 Grade Level Door  
Available 4/1/24

**Lease Rate:** \$1.10/SF Blended + NNN

### Additional Highlights

- Full HVAC in office
- Direct access to regional trail system
- Easy access to major freeways
- Well-maintained building with ownership on site



**KERMIT JORGENSEN**  
206.787.1475  
kjorgensen@neilwalter.com

**MAX WHITE**  
206.787.1463  
mwhite@neilwalter.com

All information references in this document are approximate. The information contained herein is contained from sources deemed reliable. It is provided without representation, warranty, or guarantee, expressed or implied as to accuracy. Prospective buyer or tenant should conduct its own independent investigation relating to the property, government codes and regulations, allowed uses, and all other matters, regardless of whether they are referred to or contained in this document.

# FLEX 194

5872 S 194TH STREET | KENT, WA 98032

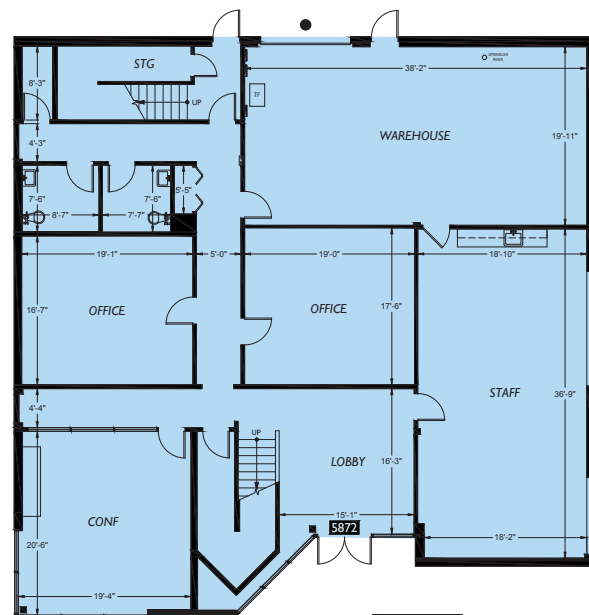


NEIL WALTER  
COMPANY

## Suite 5872 - 7,100 SF Total



Second Floor



First Floor

- Grade Level Door

**KERMIT JORGENSEN**  
206.787.1475  
kjorgensen@neilwalter.com

**MAX WHITE**  
206.787.1463  
white@neilwalter.com

550 S Michigan St  
Seattle, WA 98108  
206.787.1800  
www.neilwalter.com

All information references in this document are approximate. The information contained herein is contained from sources deemed reliable. It is provided without representation, warranty, or guarantee, expressed or implied as to accuracy. Prospective buyer or tenant should conduct its own independent investigation relating to the property, government codes and regulations, allowed uses, and all other matters, regardless of whether they are referred to or contained in this document.



# FLEX 194

5872 S 194TH STREET | KENT, WA 98032



**KERMIT JORGENSEN**  
206.787.1475  
kjorgensen@neilwalter.com

**MAX WHITE**  
206.787.1463  
white@neilwalter.com

550 S Michigan St  
Seattle, WA 98108  
206.787.1800  
www.neilwalter.com

All information references in this document are approximate. The information contained herein is contained from sources deemed reliable. It is provided without representation, warranty, or guarantee, expressed or implied as to accuracy. Prospective buyer or tenant should conduct its own independent investigation relating to the property, government codes and regulations, allowed uses, and all other matters, regardless of whether they are referred to or contained in this document.