

THE DOCK

FOR LEASE - 3 UNITS AVAILABLE - FROM 1,042 - 3,455 SF

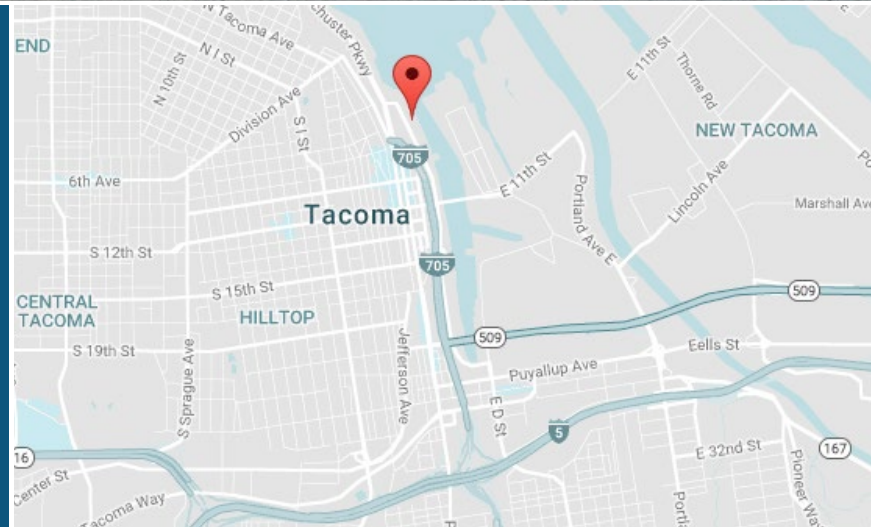
535 DOCK STREET | TACOMA, WA

WATERFRONT OFFICE SPACE



LEASE INFO

Suite 104:	3,455 SF (Available Now)
Suite 210:	1,965 SF (Available Now)
Suite 107:	1,042 SF (30 Days Notice)
Lease Rate:	\$24/SF/YR
Lease Type:	Modified Gross



PROPERTY FEATURES

**Ample
Parking**

Located on the
**Thea Foss
Waterway**

**Beautiful
decks over
water**

Located adjacent to
**Thea's Park
and Waterfront
Boardwalk**

**Restaurant
located in
building**

**Excellent I-5
and I-705
Access**



BRIANA HICKEY
253.779.2424
bhickey@neilwalter.com

All information references in this document are approximate. The information contained herein is contained from sources deemed reliable. It is provided without representation, warranty, or guarantee, expressed or implied as to accuracy. Prospective buyer or tenant should conduct its own independent investigation relating to the property, government codes and regulations, allowed uses, and all other matters, regardless of whether they are referred to or contained in this document.

THE DOCK

535 DOCK STREET | TACOMA, WA

SUITE 104 3,455 SF



BRIANA HICKEY

253.779.2424

bhickey@neilwalter.com

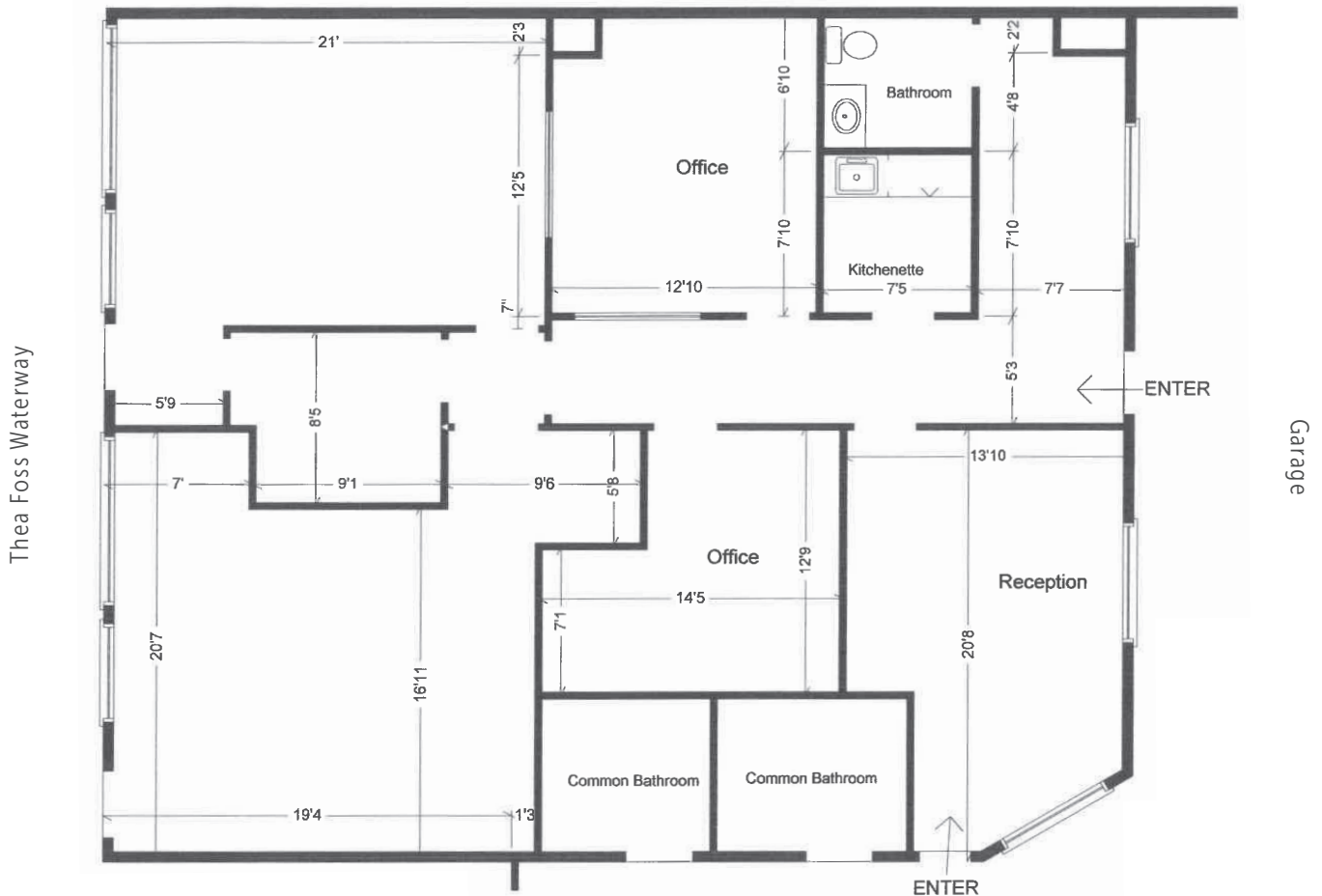
253.779.8400
www.neilwalter.com

1940 East D St, #100
Tacoma, WA 98421

THE DOCK

535 DOCK STREET | TACOMA, WA

SUITE 210 1,965 SF



BRIANA HICKEY
253.779.2424
bhickey@neilwalter.com

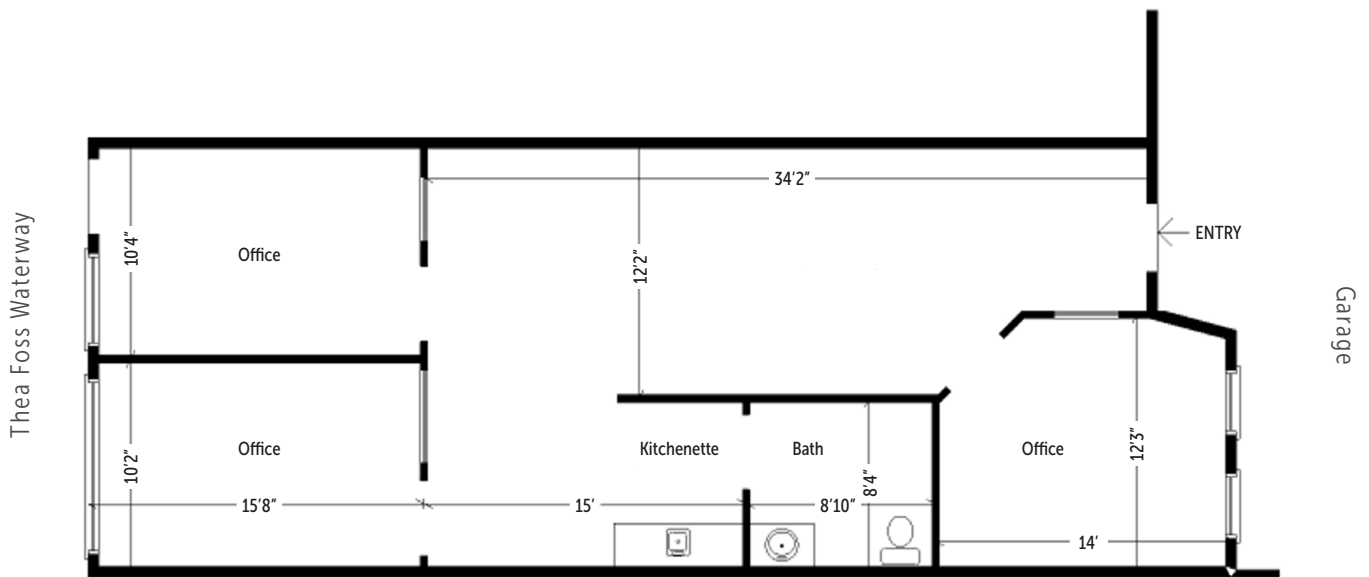
253.779.8400
www.neilwalter.com

1940 East D St, #100
Tacoma, WA 98421

THE DOCK

535 DOCK STREET | TACOMA, WA

SUITE 107 1,042 SF



BRIANA HICKEY
253.779.2424
bhickey@neilwalter.com

253.779.8400
www.neilwalter.com

1940 East D St, #100
Tacoma, WA 98421

THE DOCK

535 DOCK STREET | TACOMA, WA



BRIANA HICKEY

253.779.2424

bhickey@neilwalter.com

253.779.8400
www.neilwalter.com

1940 East D St, #100
Tacoma, WA 98421

All information references in this document are approximate. The information contained herein is contained from sources deemed reliable. It is provided without representation, warranty, or guarantee, expressed or implied as to accuracy. Prospective buyer or tenant should conduct its own independent investigation relating to the property, government codes and regulations, allowed uses, and all other matters, regardless of whether they are referred to or contained in this document.