

NORTHWARD BUSINESS PARK

BUILDING E | 19204 68TH AVENUE SOUTH | KENT, WA

FOR LEASE 51,102 SF

CLASS A OFFICE/WAREHOUSE IN NORTH KENT VALLEY



LEASE INFORMATION

Available Size:	51,102 SF
Office Size:	7,464 SF
Lease Rate:	Call for rates
Loading:	9 DH 3 GL (12' x 16') 1 ramp
Clear Height:	24'
Available:	12/1/2023

PROPERTY HIGHLIGHTS

- 22' x 54' column spacing
- 8 pit levelers; 12' x 16' oversized GL doors
- Unit fronts West Valley Hwy for great visibility
- Excellent access to freeways
- Zoned M-1, City of Kent
- High identity corporate image
- Fenced rear loading area



KERMIT JORGENSEN
206.787.1475
kjorgensen@neilwalter.com

JOHN BLEDSOE
206.787.1460
jbledsoe@neilwalter.com

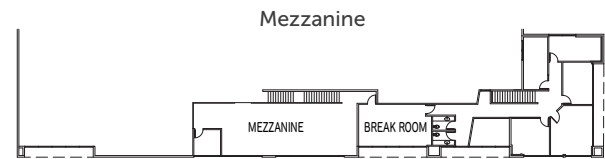
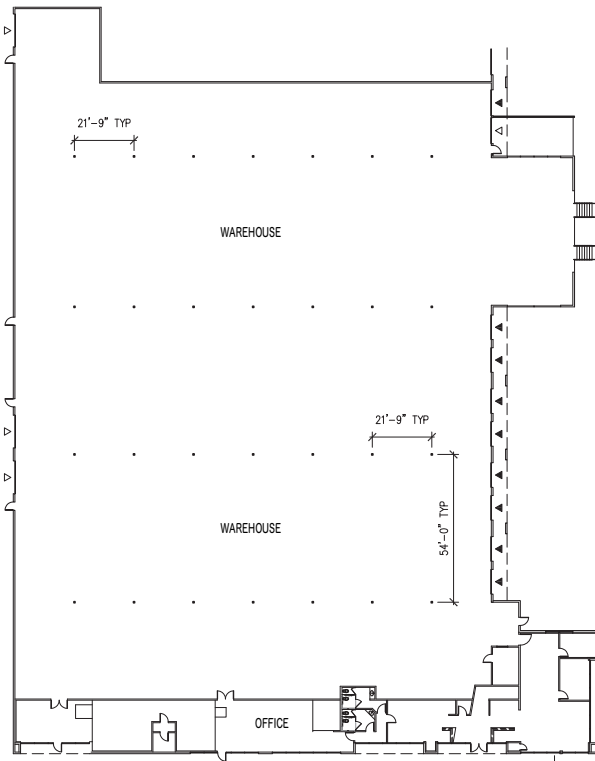
All information references in this document are approximate. The information contained herein is contained from sources deemed reliable. It is provided without representation, warranty, or guarantee, expressed or implied as to accuracy. Prospective buyer or tenant should conduct its own independent investigation relating to the property, government codes and regulations, allowed uses, and all other matters, regardless of whether they are referred to or contained in this document.

NORTHWARD BUSINESS PARK

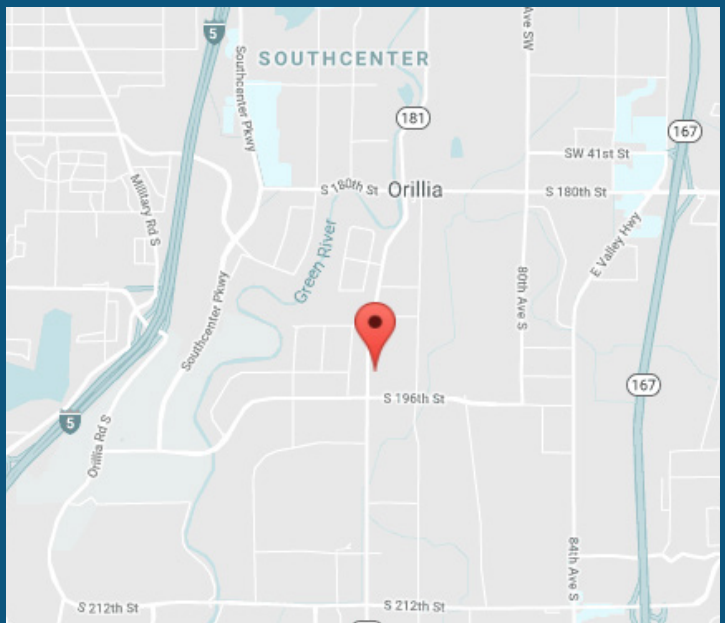
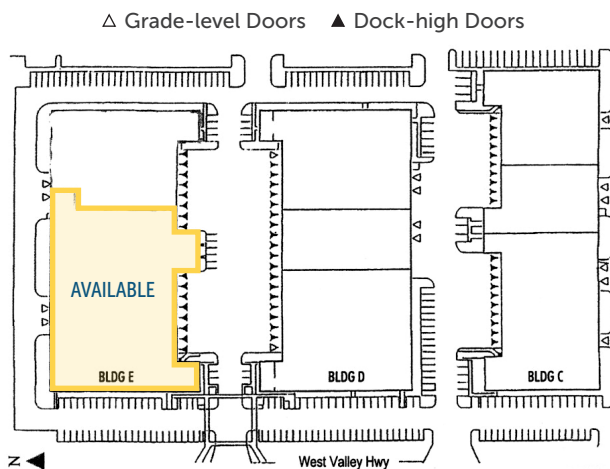
BUILDING E | 19204 68TH AVENUE SOUTH | KENT, WA



FLOOR PLAN



SITE PLAN



KERMIT JORGENSEN
206.787.1475
kjorgensen@neilwalter.com

JOHN BLEDSOE
206.787.1460
jbledsoe@neilwalter.com

All information references in this document are approximate. The information contained herein is contained from sources deemed reliable. It is provided without representation, warranty, or guarantee, expressed or implied as to accuracy. Prospective buyer or tenant should conduct its own independent investigation relating to the property, government codes and regulations, allowed uses, and all other matters, regardless of whether they are referred to or contained in this document.