

# 552 S MICHIGAN ST

SEATTLE, WA 98108

FOR LEASE 1,002 SF

## SMALL GEORGETOWN OFFICE SPACE



### LEASE INFORMATION

<b>Available Size:</b>	1,002 SF
<b>Year Built:</b>	1978
<b>Lease Rate:</b>	Call for rates
<b>Available:</b>	Now

### PROPERTY HIGHLIGHTS

- Kitchen, conference room and open area
- Located in the heart of Georgetown near the Design Center
- Quick access to I-5 and SR-99
- Several amenities nearby
- Free parking



**JIM HONAN**  
206.787.1464

jhonan@neilwalter.com

**KEVIN SKILLESTAD**  
206.715.0757

kevin.skillestad@kbcadvisors.com

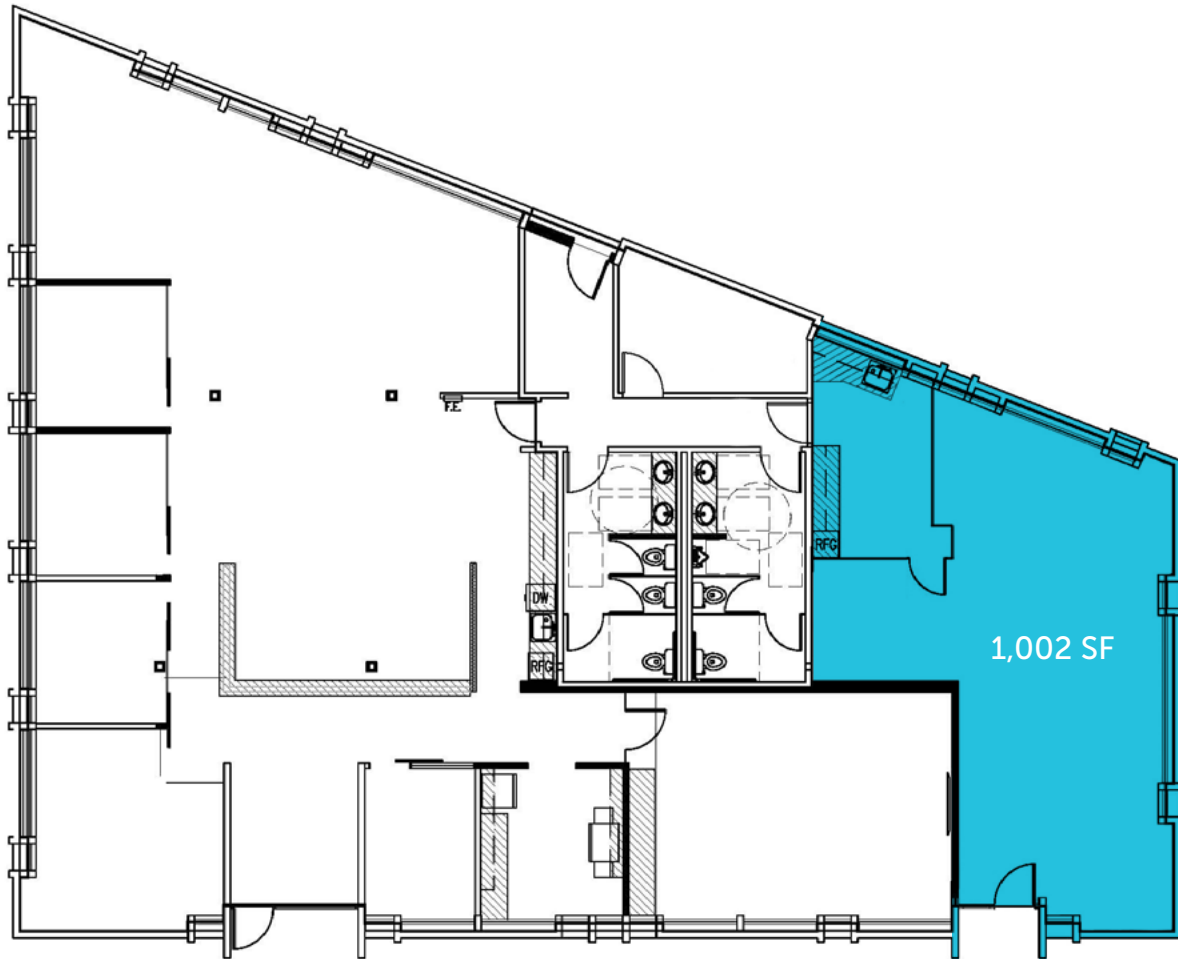
All information references in this document are approximate. The information contained herein is contained from sources deemed reliable. It is provided without representation, warranty, or guarantee, expressed or implied as to accuracy. Prospective buyer or tenant should conduct its own independent investigation relating to the property, government codes and regulations, allowed uses, and all other matters, regardless of whether they are referred to or contained in this document.

# 552 S MICHIGAN ST

SEATTLE, WA 98108



## FLOOR PLAN



**JIM HONAN**  
206.787.1464

[jhonan@neilwalter.com](mailto:jhonan@neilwalter.com)

**KEVIN SKILLESTAD**  
206.715.0757

[kevin.skillestad@kbcadvisors.com](mailto:kevin.skillestad@kbcadvisors.com)

550 S Michigan St  
Seattle, WA 98108  
206.787.1800  
[www.neilwalter.com](http://www.neilwalter.com)

All information references in this document are approximate. The information contained herein is contained from sources deemed reliable. It is provided without representation, warranty, or guarantee, expressed or implied as to accuracy. Prospective buyer or tenant should conduct its own independent investigation relating to the property, government codes and regulations, allowed uses, and all other matters, regardless of whether they are referred to or contained in this document.



# 552 S MICHIGAN ST

SEATTLE, WA 98108



**JIM HONAN**  
206.787.1464

[jhonan@neilwalter.com](mailto:jhonan@neilwalter.com)

**KEVIN SKILLESTAD**  
206.715.0757

[kevin.skillestad@kbcadvisors.com](mailto:kevin.skillestad@kbcadvisors.com)

550 S Michigan St  
Seattle, WA 98108  
206.787.1800  
[www.neilwalter.com](http://www.neilwalter.com)

All information references in this document are approximate. The information contained herein is contained from sources deemed reliable. It is provided without representation, warranty, or guarantee, expressed or implied as to accuracy. Prospective buyer or tenant should conduct its own independent investigation relating to the property, government codes and regulations, allowed uses, and all other matters, regardless of whether they are referred to or contained in this document.

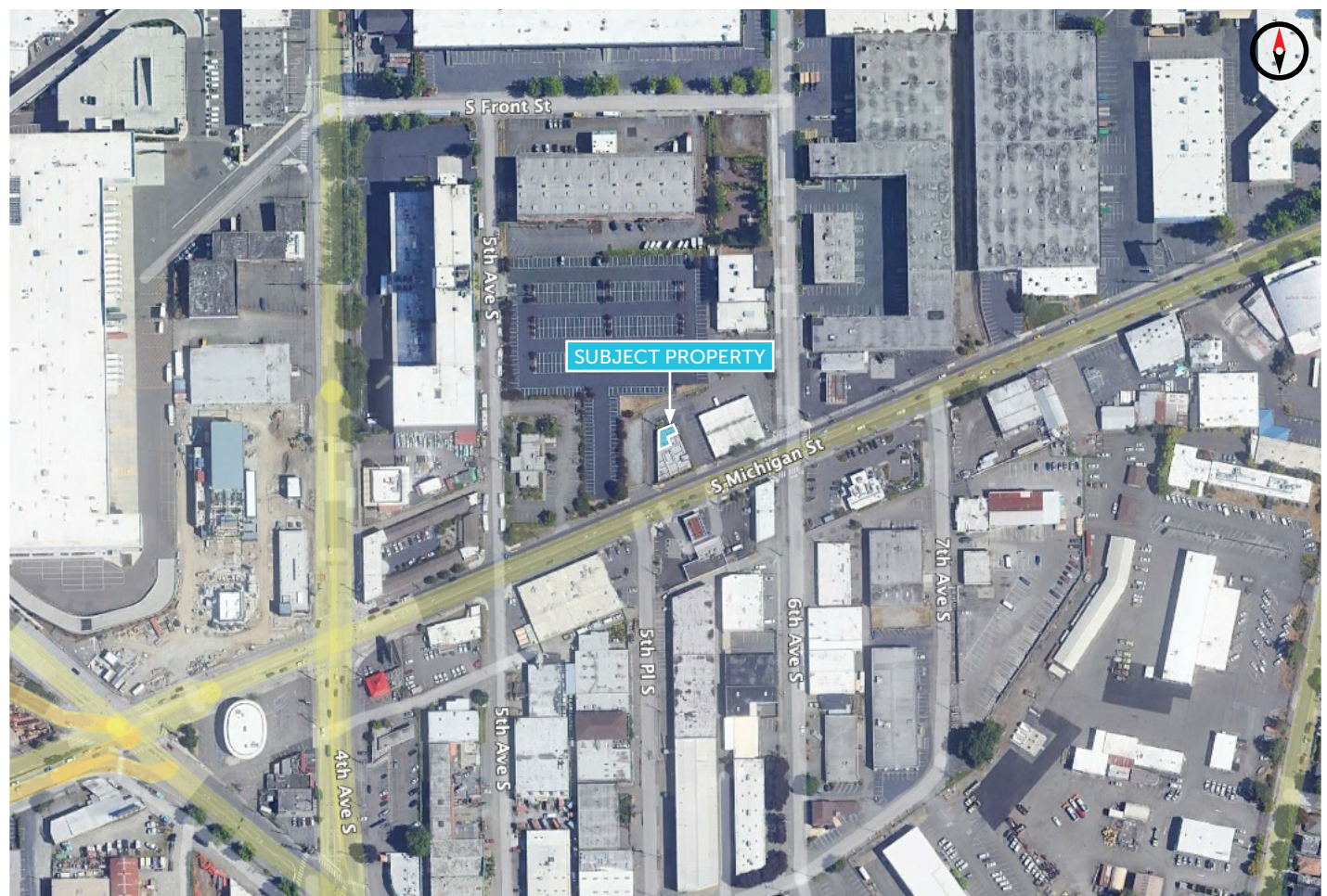


# 552 S MICHIGAN ST

SEATTLE, WA 98108



NEIL WALTER  
COMPANY



**JIM HONAN**  
206.787.1464

[jhonan@neilwalter.com](mailto:jhonan@neilwalter.com)

**KEVIN SKILLESTAD**  
206.715.0757

[kevin.skillestad@kbcadvisors.com](mailto:kevin.skillestad@kbcadvisors.com)

550 S Michigan St  
Seattle, WA 98108  
206.787.1800

[www.neilwalter.com](http://www.neilwalter.com)

All information references in this document are approximate. The information contained herein is contained from sources deemed reliable. It is provided without representation, warranty, or guarantee, expressed or implied as to accuracy. Prospective buyer or tenant should conduct its own independent investigation relating to the property, government codes and regulations, allowed uses, and all other matters, regardless of whether they are referred to or contained in this document.