

PACIFIC GEORGETOWN - 6321 BUILDING

6321 7TH AVE S | SEATTLE, WA 98108

FREE STANDING 15,960 SF BLDG | 4,000 SF YARD | GEORGETOWN NEIGHBORHOOD



PROPERTY FEATURES

- 15,960 SF Total
 - 3,775 SF Office (2 Floors)
 - 12,185 SF Warehouse
- 3 Five-ton Bridge Cranes
- 4 Grade-Level Doors & 1 Dock-High
- 26 Parking Stalls + 4,000 SF Yard
- 22' Clear Height



ED HOGAN
206.755.3345
ehogan@neilwalter.com

JOHN WERDEL
206.332.1488
jwerdel@nai-psp.com



All information references in this document are approximate. The information contained herein is contained from sources deemed reliable. It is provided without representation, warranty, or guarantee, expressed or implied as to accuracy. Prospective buyer or tenant should conduct its own independent investigation relating to the property, government codes and regulations, allowed uses, and all other matters, regardless of whether they are referred to or contained in this document.

PACIFIC GEORGETOWN - 6321 BUILDING

6321 7TH AVE S | SEATTLE, WA 98108

15,960 SF Total

3,775 SF Office (2 Floors)

12,185 SF Warehouse

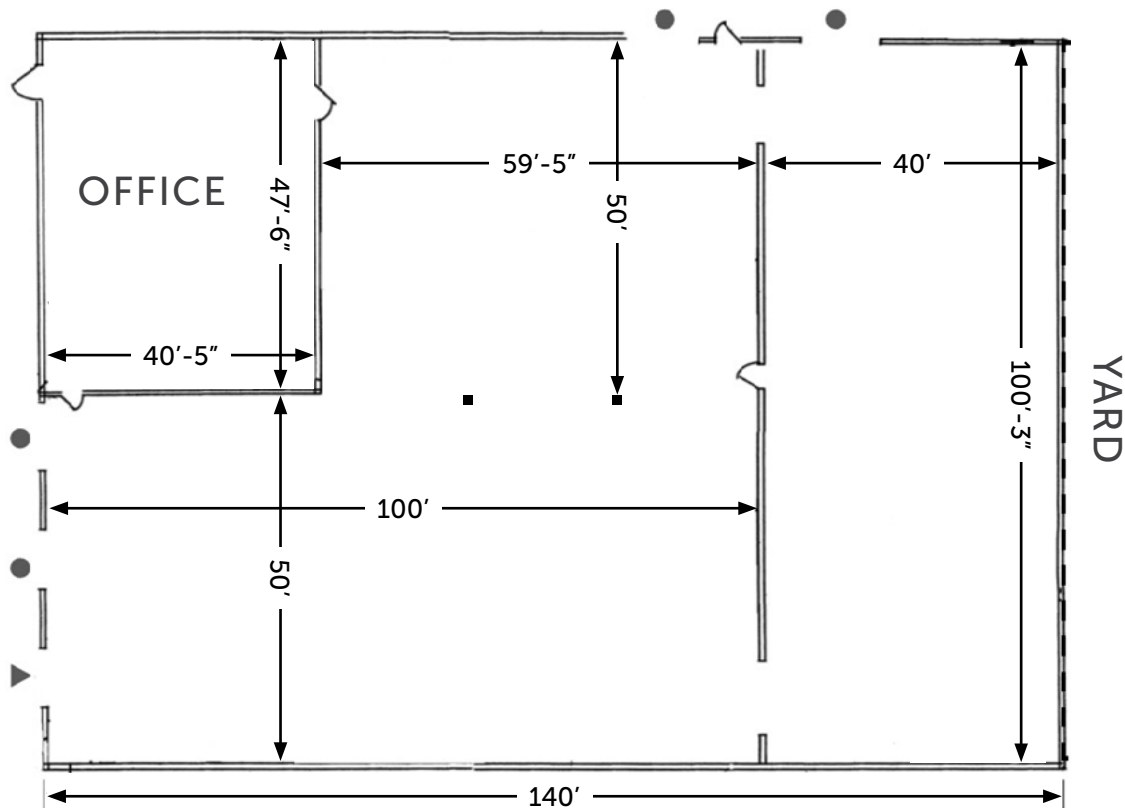
3 Five-ton Bridge Cranes

4 Grade-Level Doors & 1 Dock-High

26 Parking Stalls + 4,000 SF Yard

22' Clear Height

[Click for Tour of the Office](#)



LEGEND

● GL doors | ▲ DH doors

All measurements are estimates



ED HOGAN
206.755.3345
ehogan@neilwalter.com

JOHN WERDEL
206.332.1488
jwerdel@nai-psp.com



PACIFIC GEORGETOWN - 6321 BUILDING

6321 7TH AVE S | SEATTLE, WA 98108



NEIL WALTER
COMPANY

ED HOGAN
206.755.3345
ehogan@neilwalter.com

JOHN WERDEL
206.332.1488
jwerdel@nai-psp.com

NAI Puget Sound
Properties

All information references in this document are approximate. The information contained herein is contained from sources deemed reliable. It is provided without representation, warranty, or guarantee, expressed or implied as to accuracy. Prospective buyer or tenant should conduct its own independent investigation relating to the property, government codes and regulations, allowed uses, and all other matters, regardless of whether they are referred to or contained in this document.