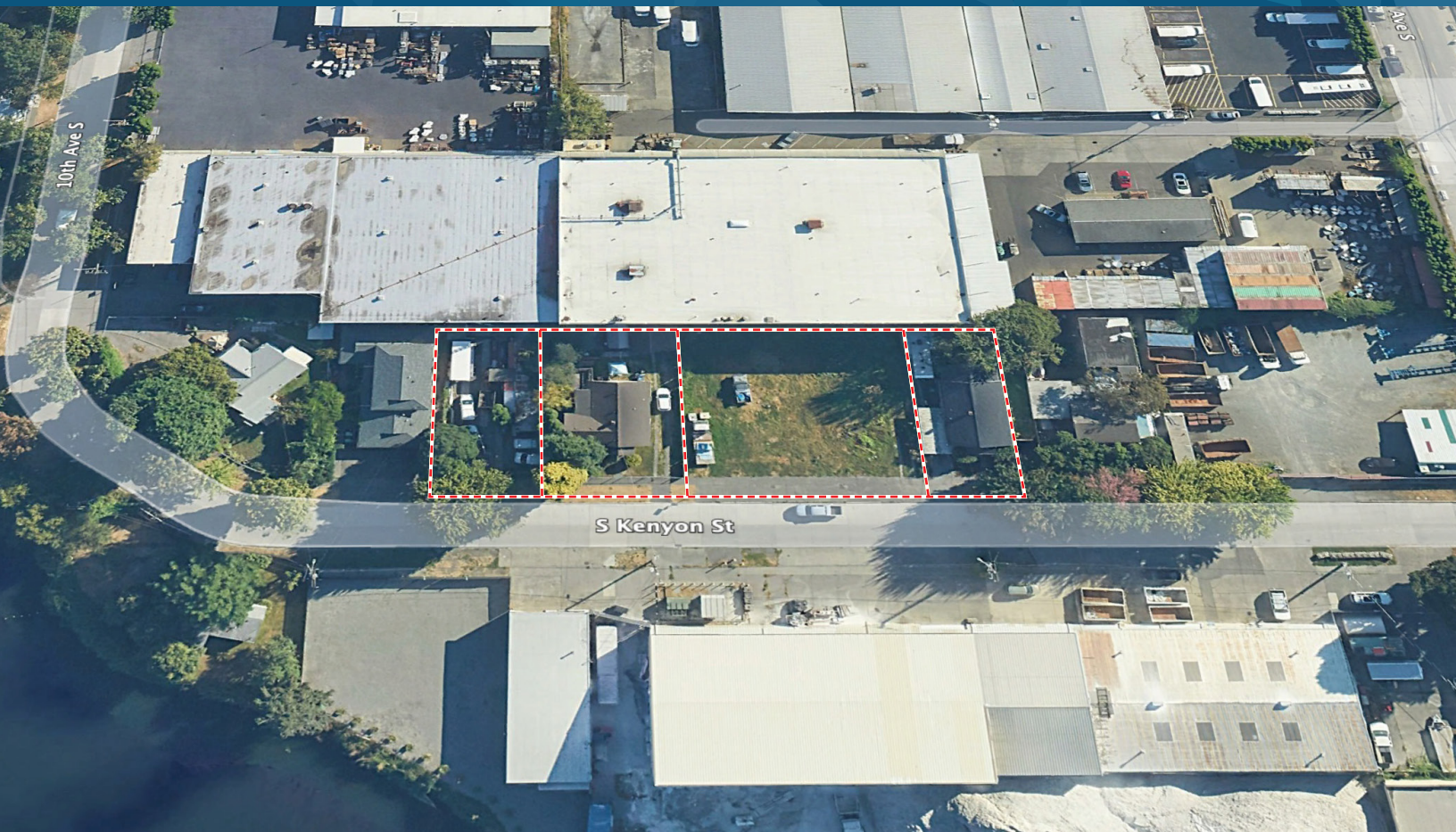


KENYON STREET ASSEMBLAGE

823 - 843 S KENYON ST | SEATTLE, WA

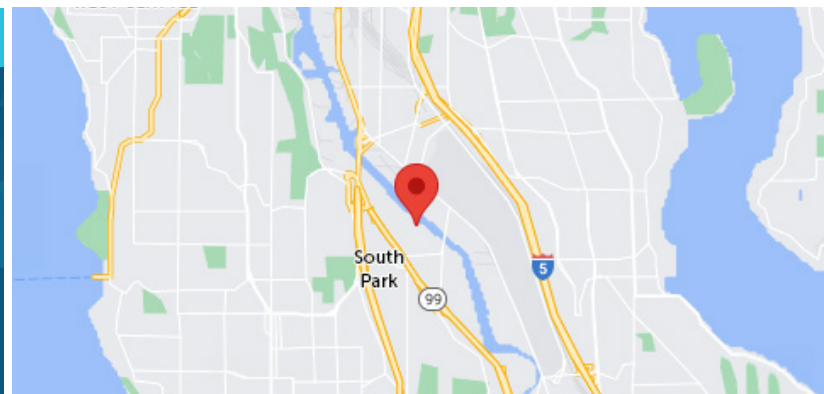


SALE & LEASE INFORMATION

Land Size	Office Size	Divisible	Buildings	Parcels	Year Built	Lease Rate	Sale Price
25,000 SF	1,970 SF	15,000/10,000 SF	2	4	1919/1922	Call Broker	\$2,800,000

PROPERTY HIGHLIGHTS

- Rare contractor yard opportunity in South Park
- Industrial zoning IG2-U65
- Small building with adjacent yard
- Preliminary design for 3-floor, 65,000 SF industrial/maker-space building



KERMIT JORGENSEN

206.787.1475

kjorgensen@neilwalter.com

JOHN BLEDSOE

206.787.1460

jbledsoe@neilwalter.com

SPENCER MEAD

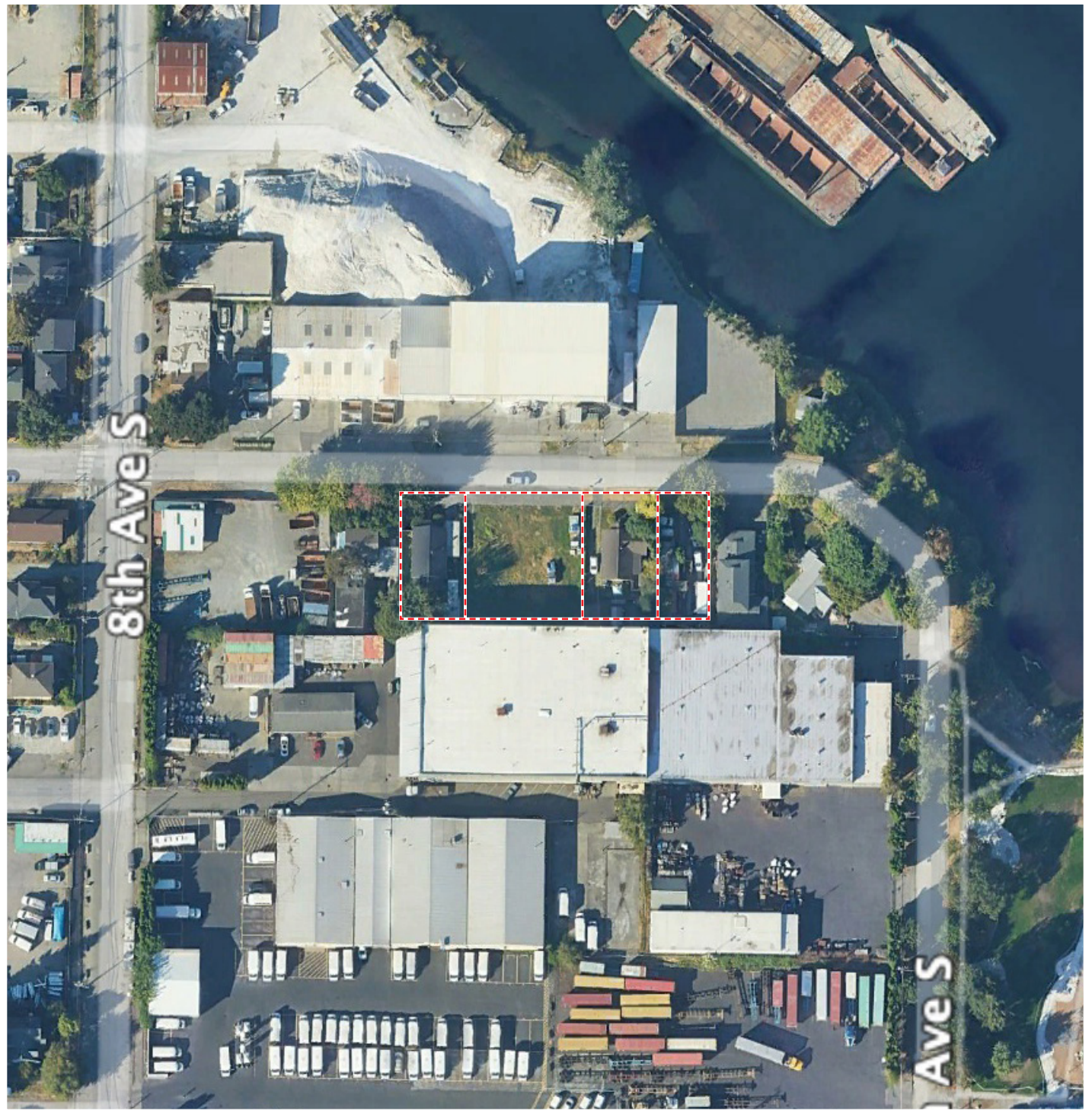
206.787.1476

smead@neilwalter.com

All information references in this document are approximate. The information contained herein is contained from sources deemed reliable. It is provided without representation, warranty, or guarantee, expressed or implied as to accuracy. Prospective buyer or tenant should conduct its own independent investigation relating to the property, government codes and regulations, allowed uses, and all other matters, regardless of whether they are referred to or contained in this document.

KENYON STREET ASSEMBLAGE

823 - 843 S KENYON ST | SEATTLE, WA



KERMIT JORGENSEN
206.787.1475
kjorgensen@neilwalter.com

JOHN BLEDSOE
206.787.1460
jbledsoe@neilwalter.com

SPENCER MEAD
206.787.1476
smead@neilwalter.com

550 S Michigan St
Seattle, WA 98108
206.787.1800
www.neilwalter.com

All information references in this document are approximate. The information contained herein is contained from sources deemed reliable. It is provided without representation, warranty, or guarantee, expressed or implied as to accuracy. Prospective buyer or tenant should conduct its own independent investigation relating to the property, government codes and regulations, allowed uses, and all other matters, regardless of whether they are referred to or contained in this document.