

3102 B STREET NW

AUBURN, WA

FOR LEASE - 22,175 SF

STANDALONE SERVICE INDUSTRIAL BUILDING & YARD

CALL BROKER FOR RATES



OVERALL SITE DETAILS

- 22,175 SF between 2 buildings
- 2.04 acres (25% site coverage)
- Fully fenced with automated gate
- Sprinklered
- M-2 Heavy industrial zoning

MAIN BUILDING

- 15,995 SF
- 2,205 SF office
- 8 GL doors & 1 DH door
- 14'-18' clear height

SHOP

- 6,180 SF
- Small office and restroom
- 4 GL doors
- Building can be removed to allow for more yard space

COMPLETELY REFRESHED BUILDING: New flooring/paint in office | New LED lighting, insulation and paint in warehouse



GRIFFIN DAY
206.261.4012
gday@neilwalter.com

JIM HONAN
206.399.7649
jhonan@neilwalter.com

All information references in this document are approximate. The information contained herein is contained from sources deemed reliable. It is provided without representation, warranty, or guarantee, expressed or implied as to accuracy. Prospective buyer or tenant should conduct its own independent investigation relating to the property, government codes and regulations, allowed uses, and all other matters, regardless of whether they are referred to or contained in this document.

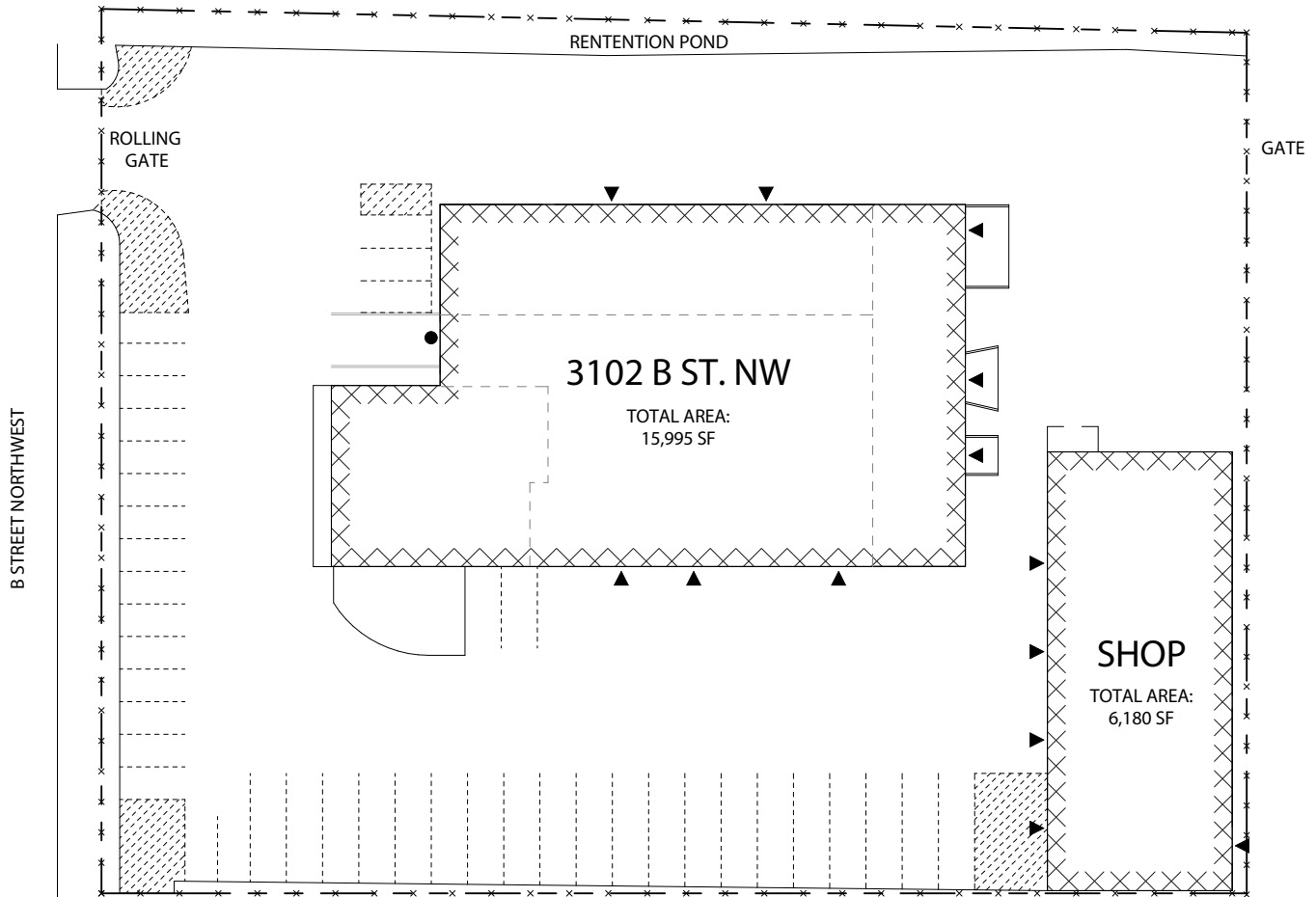
3102 B STREET NW

AUBURN, WA



NEIL WALTER
COMPANY

OVERALL SITE PLAN



OVERHEAD DOOR ▲
DOCK HIGH DOOR ●



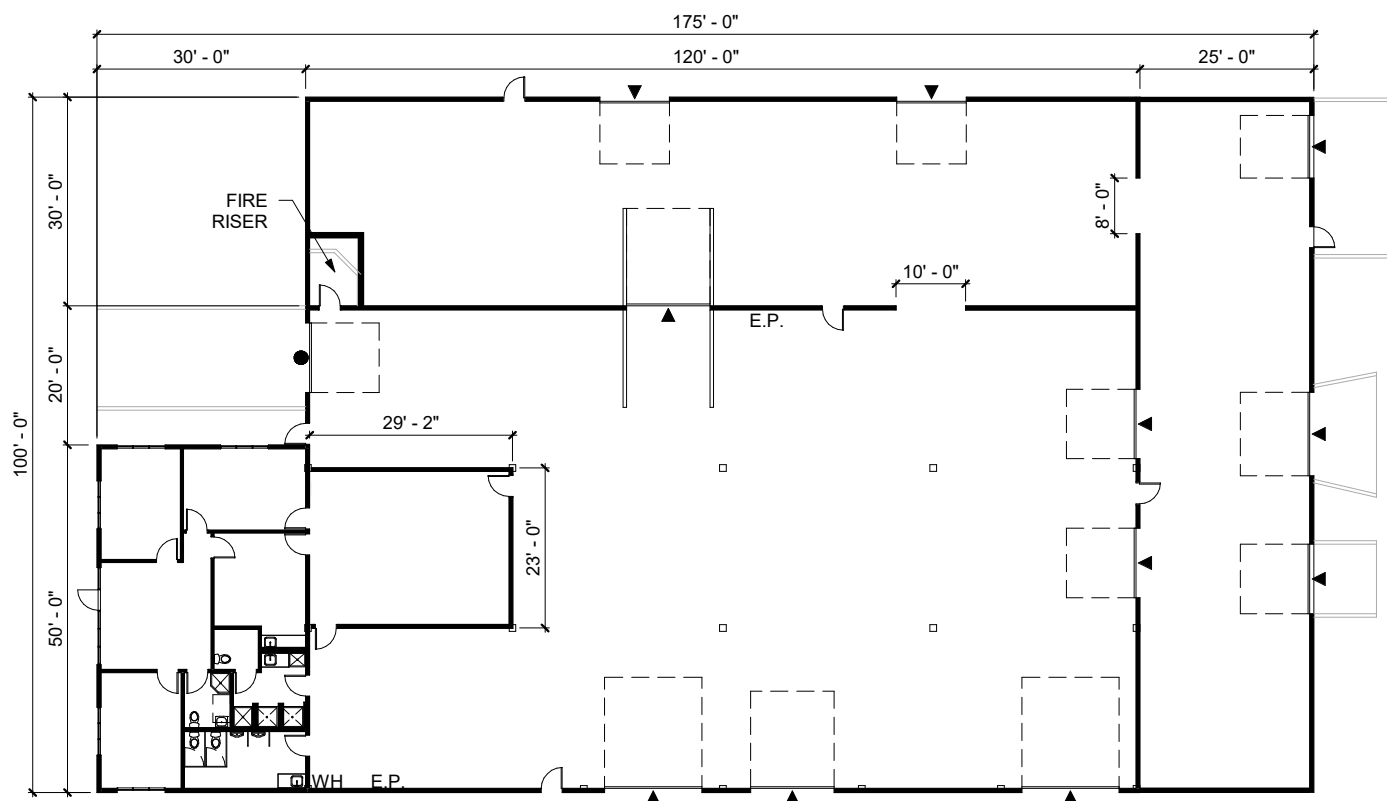
GRIFFIN DAY
206.261.4012
gday@neilwalter.com

JIM HONAN
206.399.7649
jhonan@neilwalter.com

550 S Michigan St
Seattle, WA 98108
206.787.1800
www.neilwalter.com

All information references in this document are approximate. The information contained herein is contained from sources deemed reliable. It is provided without representation, warranty, or guarantee, expressed or implied as to accuracy. Prospective buyer or tenant should conduct its own independent investigation relating to the property, government codes and regulations, allowed uses, and all other matters, regardless of whether they are referred to or contained in this document.

2,205 SF Office



OVERHEAD DOOR ▲
DOCK HIGH DOOR ●

3102 B STREET NW

AUBURN, WA



NEIL WALTER
COMPANY



GRIFFIN DAY
206.261.4012
gday@neilwalter.com

JIM HONAN
206.399.7649
jhonan@neilwalter.com

550 S Michigan St
Seattle, WA 98108
206.787.1800
www.neilwalter.com

All information references in this document are approximate. The information contained herein is contained from sources deemed reliable. It is provided without representation, warranty, or guarantee, expressed or implied as to accuracy. Prospective buyer or tenant should conduct its own independent investigation relating to the property, government codes and regulations, allowed uses, and all other matters, regardless of whether they are referred to or contained in this document.