

# PACIFIC BUSINESS PARK

FOR LEASE - 9,392 TOTAL SF

BUILDING E | 8725 S 212TH ST | KENT, WA 98032

## SCHOOL & CLASSROOM FACILITY WITH IMMEDIATE ACCESS TO HWY-167



### LEASE INFORMATION

Unit	Total Size	Lease Rate	Available
8725	9,392 SF	Call Broker	60 Days Notice

### PROPERTY FEATURES

- 4 large classrooms and several smaller classrooms
- 3 private offices and large lunchroom area
- Building signage available
- Immediate freeway access
- Centrally located
- 5 minutes from I-405
- 10 minutes to I-5
- Population of 274,147 within a 5-mile radius



**KERMIT JORGENSEN**  
206.787.1475

[kjorgensen@neilwalter.com](mailto:kjorgensen@neilwalter.com)

**FLETCHER FARRAR**  
206.787.1469

[ffarrar@neilwalter.com](mailto:ffarrar@neilwalter.com)

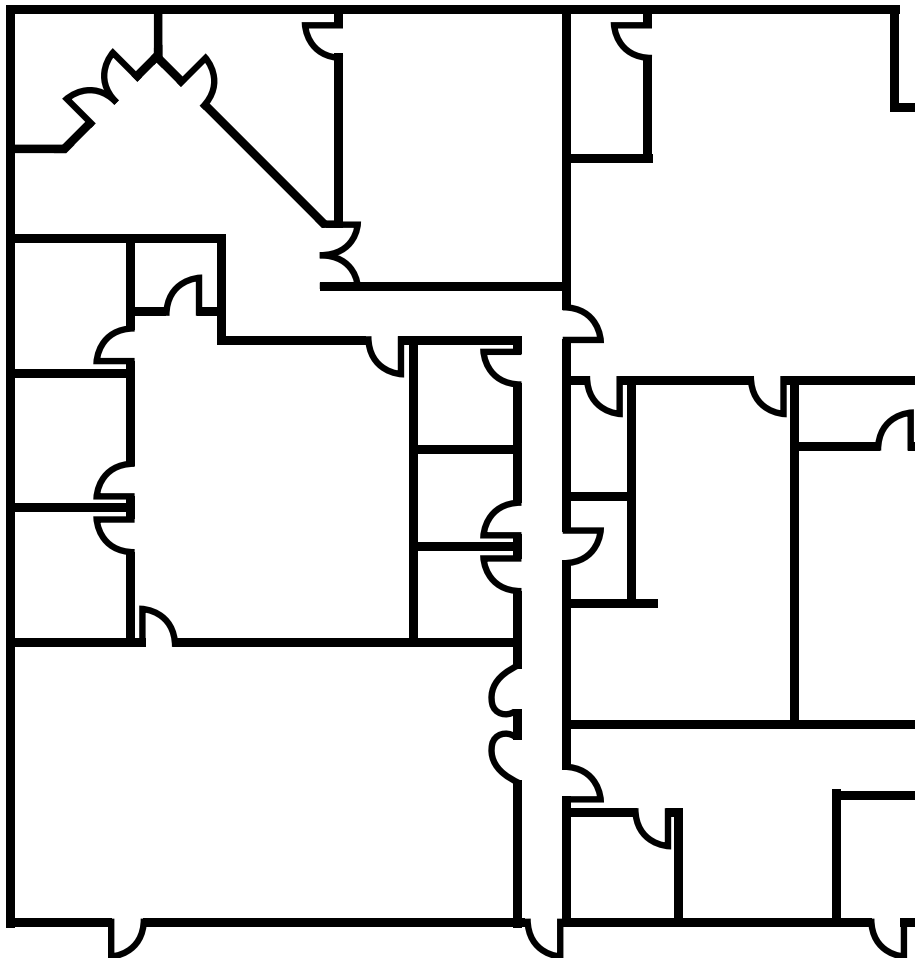
All information references in this document are approximate. The information contained herein is contained from sources deemed reliable. It is provided without representation, warranty, or guarantee, expressed or implied as to accuracy. Prospective buyer or tenant should conduct its own independent investigation relating to the property, government codes and regulations, allowed uses, and all other matters, regardless of whether they are referred to or contained in this document.

# PACIFIC BUSINESS PARK

BUILDING E | 8725 S 212TH ST | KENT, WA 98032



Unit	Total Size:	Lease Rate	Available
8725	9,392 SF	Call Broker	60 Days Notice



**KERMIT JORGENSEN**  
206.787.1475  
kjorgensen@neilwalter.com

**FLETCHER FARRAR**  
206.787.1469  
ffarrar@neilwalter.com

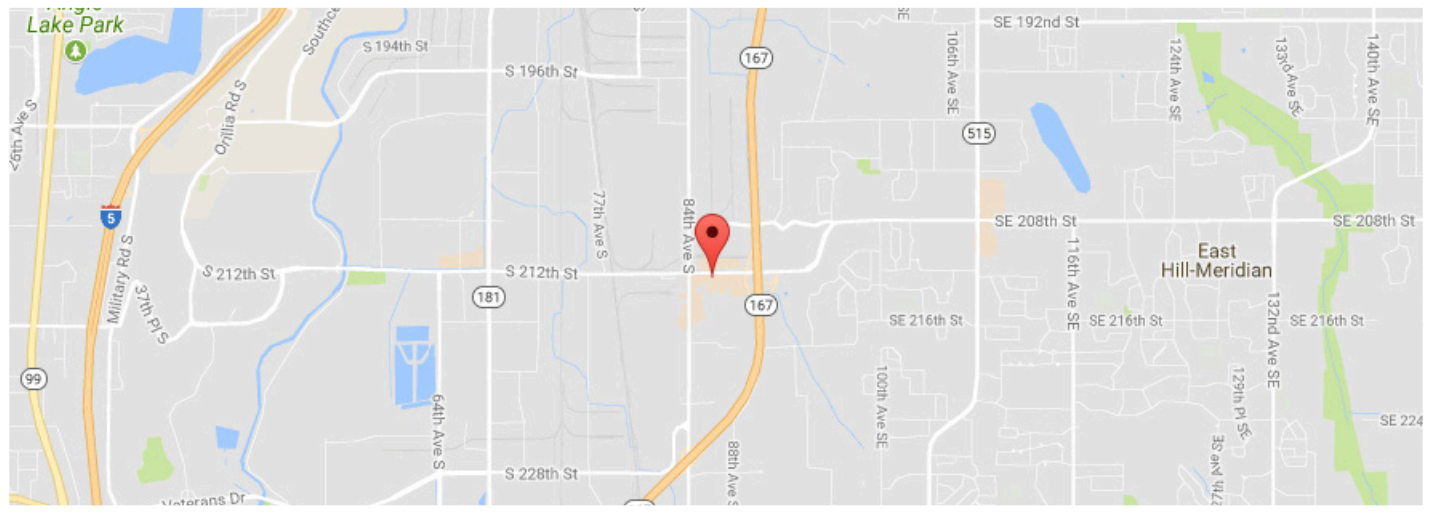
550 S Michigan St  
Seattle, WA 98108  
206.787.1800  
www.neilwalter.com

All information references in this document are approximate. The information contained herein is contained from sources deemed reliable. It is provided without representation, warranty, or guarantee, expressed or implied as to accuracy. Prospective buyer or tenant should conduct its own independent investigation relating to the property, government codes and regulations, allowed uses, and all other matters, regardless of whether they are referred to or contained in this document.



# PACIFIC BUSINESS PARK

BUILDING E | 8725 S 212TH ST | KENT, WA 98032



**KERMIT JORGENSEN**  
206.787.1475  
kjorgensen@neilwalter.com

**FLETCHER FARRAR**  
206.787.1469  
ffarrar@neilwalter.com

550 S Michigan St  
Seattle, WA 98108  
206.787.1800  
www.neilwalter.com

All information references in this document are approximate. The information contained herein is contained from sources deemed reliable. It is provided without representation, warranty, or guarantee, expressed or implied as to accuracy. Prospective buyer or tenant should conduct its own independent investigation relating to the property, government codes and regulations, allowed uses, and all other matters, regardless of whether they are referred to or contained in this document.