

# 24TH STREET BUSINESS PARK

13724 24TH ST E, BLDG F (SOUTH) | SUMNER, WA

FOR LEASE - 18,302 SF

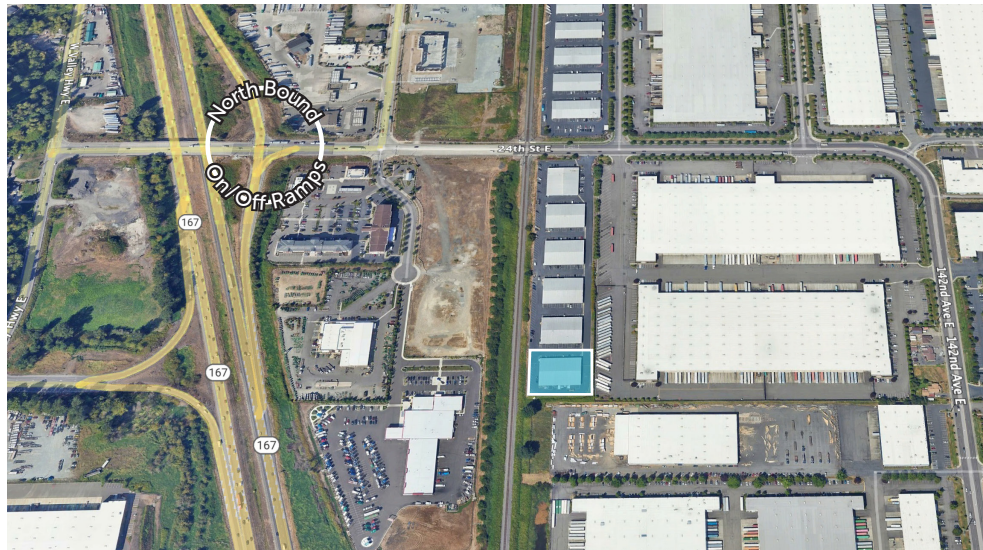
## FULL BUILDING WITH FENCED YARD AVAILABLE FOR LEASE



**LEASE RATE: \$1.25/SF, BLENDED**

### PROPERTY FEATURES:

- 18,302 SF standalone building
- 2,794 SF of office
- 17,717 SF of fenced yard/loading
- 9 grade-level doors (14'x14')
- 15'-18' clear height
- 800 amps of 480v 3-phase power
- M-1 zoning
- Fully insulated
- Potential to add truck well
- Available now
- NNN: \$0.38/SF/Month



**SPENCER MEAD**

206.787.1476

smead@neilwalter.com

**GRIFFIN DAY**

206.261.4012

gday@neilwalter.com

**JOHN BLEDSOE**

206.787.1460

jbledsoe@neilwalter.com

professionally  
managed/owned by:



All information references in this document are approximate. The information contained herein is contained from sources deemed reliable. It is provided without representation, warranty, or guarantee, expressed or implied as to accuracy. Prospective buyer or tenant should conduct its own independent investigation relating to the property, government codes and regulations, allowed uses, and all other matters, regardless of whether they are referred to or contained in this document.

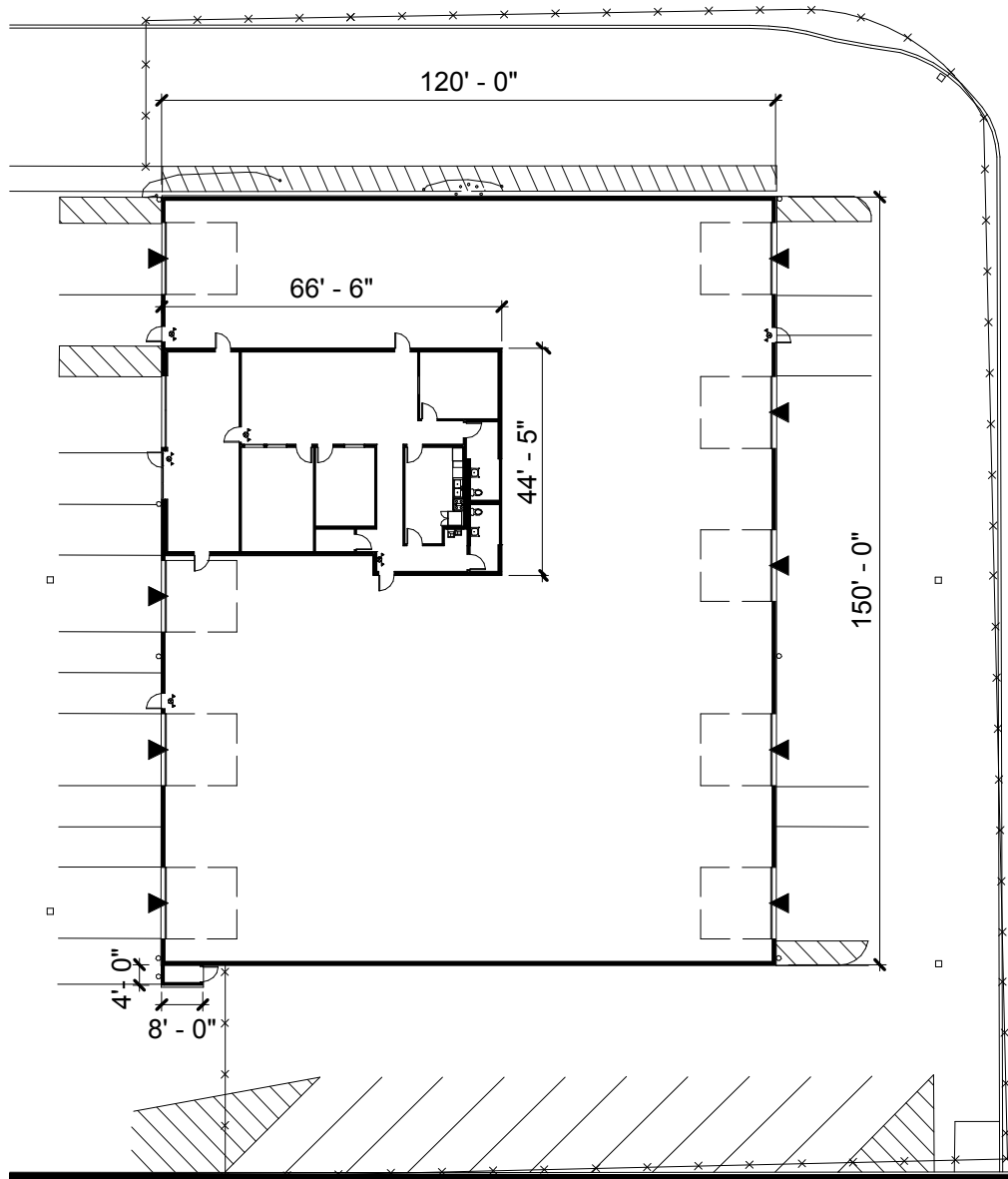
# 24TH STREET BUSINESS PARK

13724 24TH ST E, BLDG F (SOUTH) | SUMNER, WA



## SOUTH BUILDING

Building	Total Size	Office Size	Fenced Yard	Loading	Available
F	18,302 SF	2,794 SF	17,717 SF	9 GL Doors	Now



**SPENCER MEAD**

206.787.1476

smead@neilwalter.com

**GRIFFIN DAY**

206.261.4012

gday@neilwalter.com

**JOHN BLEDSOE**

206.787.1460

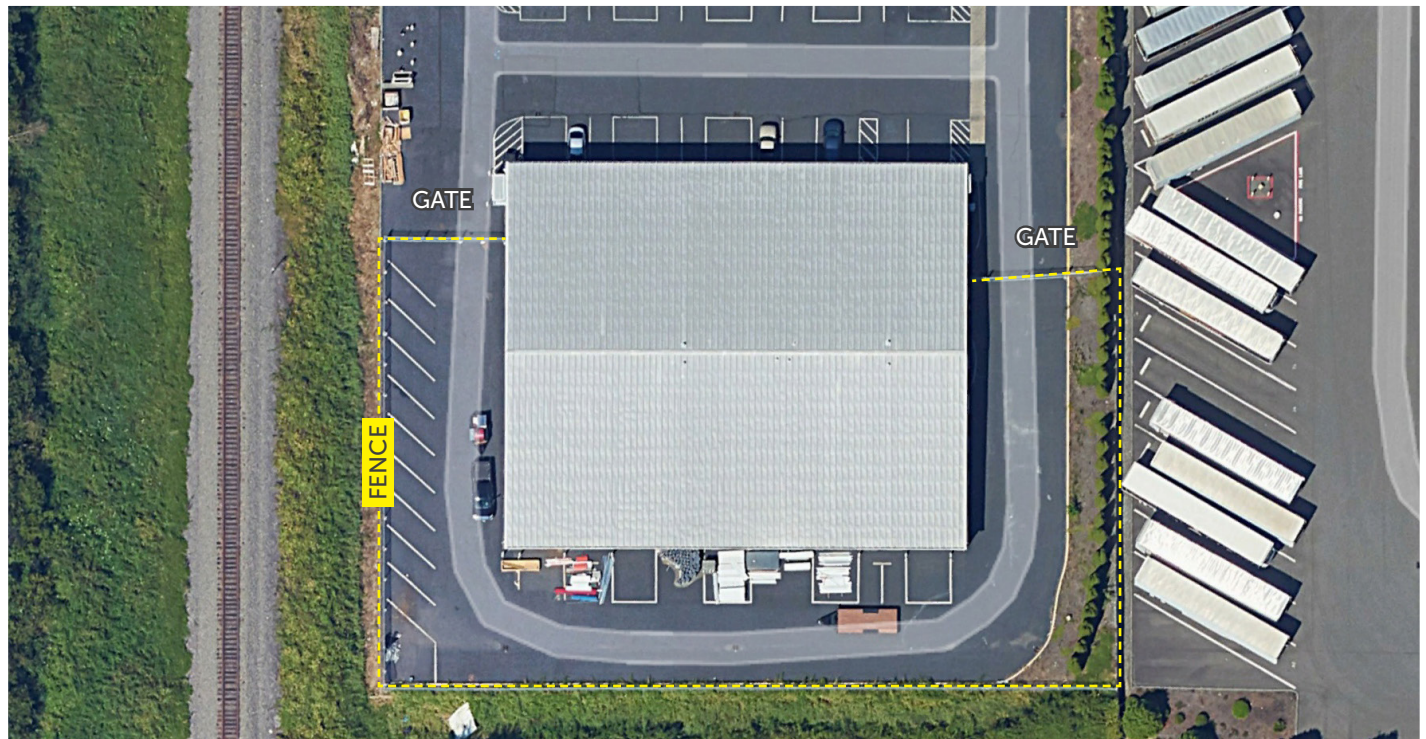
jbledsoe@neilwalter.com

All information references in this document are approximate. The information contained herein is contained from sources deemed reliable. It is provided without representation, warranty, or guarantee, expressed or implied as to accuracy. Prospective buyer or tenant should conduct its own independent investigation relating to the property, government codes and regulations, allowed uses, and all other matters, regardless of whether they are referred to or contained in this document.

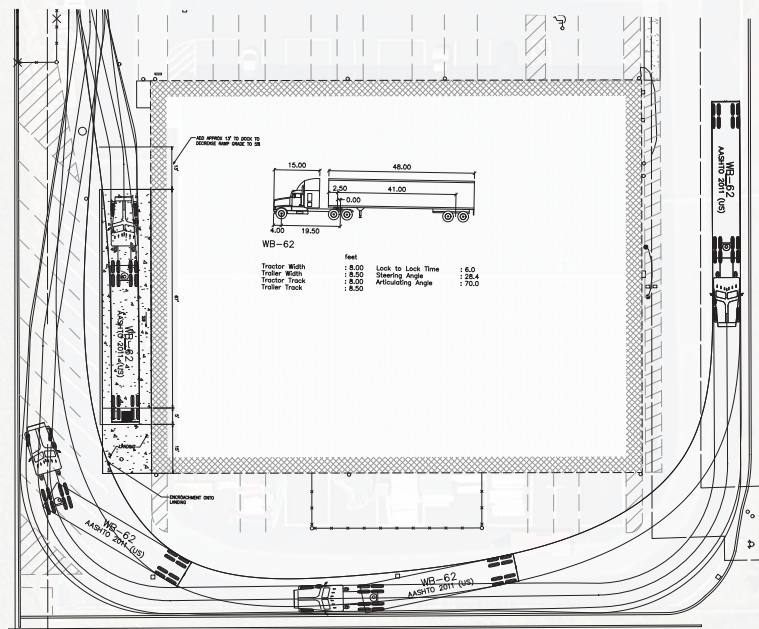


# 24TH STREET BUSINESS PARK

13724 24TH ST E, BLDG F (SOUTH) | SUMNER, WA



## POTENTIAL TRUCK WELL SCHEME



SPENCER MEAD

206.787.1476

smead@neilwalter.com

## GRIFFIN DAY

206.261.4012

gday@neilwalter.com

JOHN BLEDSOE

206.787.1460

jbledsoe@neilwalter.com

All information references in this document are approximate. The information contained herein is contained from sources deemed reliable. It is provided without representation, warranty, or guarantee, expressed or implied as to accuracy. Prospective buyer or tenant should conduct its own independent investigation relating to the property, government codes and regulations, allowed uses, and all other matters, regardless of whether they are referred to or contained in this document.



# 24TH STREET BUSINESS PARK

13724 24TH ST E, BLDG F (SOUTH) | SUMNER, WA



**SPENCER MEAD**

206.787.1476

smead@neilwalter.com

**GRIFFIN DAY**

206.261.4012

gday@neilwalter.com

**JOHN BLEDSOE**

206.787.1460

jbledsoe@neilwalter.com

All information references in this document are approximate. The information contained herein is contained from sources deemed reliable. It is provided without representation, warranty, or guarantee, expressed or implied as to accuracy. Prospective buyer or tenant should conduct its own independent investigation relating to the property, government codes and regulations, allowed uses, and all other matters, regardless of whether they are referred to or contained in this document.