

BREWERY TOWER BUILDING

FOR LEASE: 2,482 SF

2509-2515 S HOLGATE ST | TACOMA, WA

VERSATILE CREATIVE SPACE IN HISTORIC BREWERY TOWER



LEASE INFORMATION

Available Size	Office Size	Clear Height	Lease Rate	NNN Rate
2,482 SF	Restroom	10 Feet	\$0.75/SF	\$0.15/SF

PROPERTY HIGHLIGHTS

- Located in Tacoma's Downtown Historical District
- Warehouse/Residential zoning
- Below market rates
- Within close proximity to I-5 and Hwy-16
- Located near UW Tacoma and Tacoma's Nalley Valley District



JOEL JONES
253.779.2422

jjones@neilwalter.com

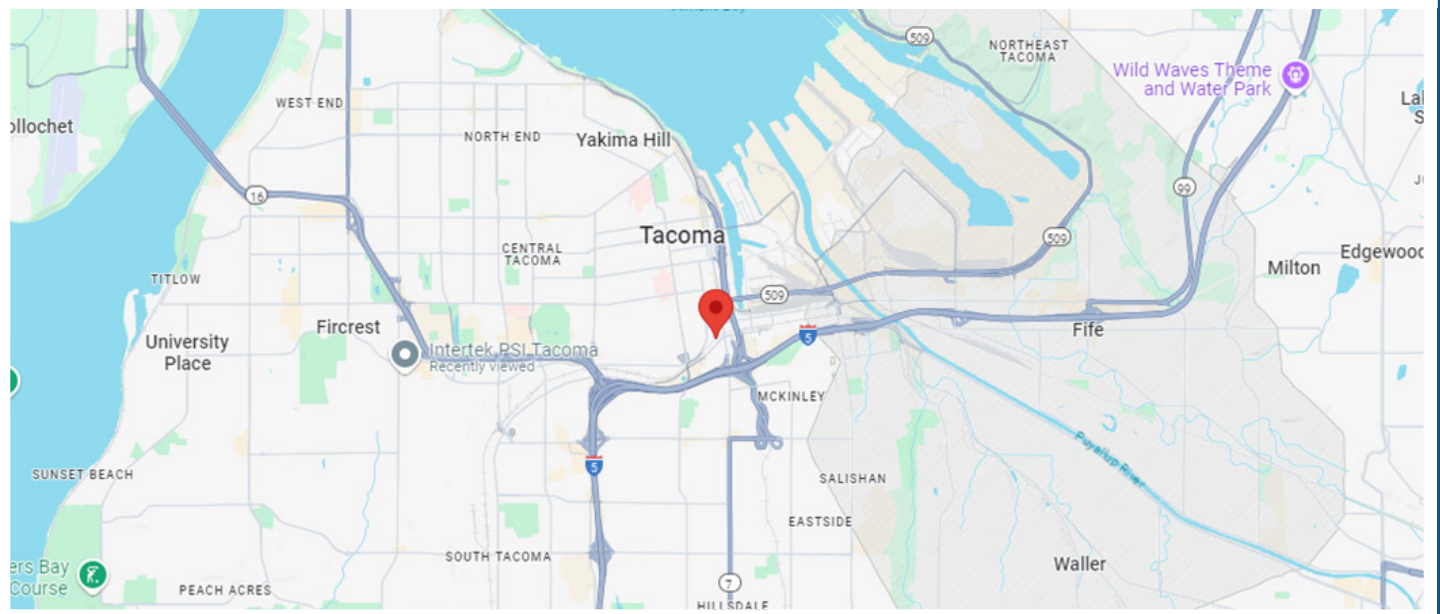
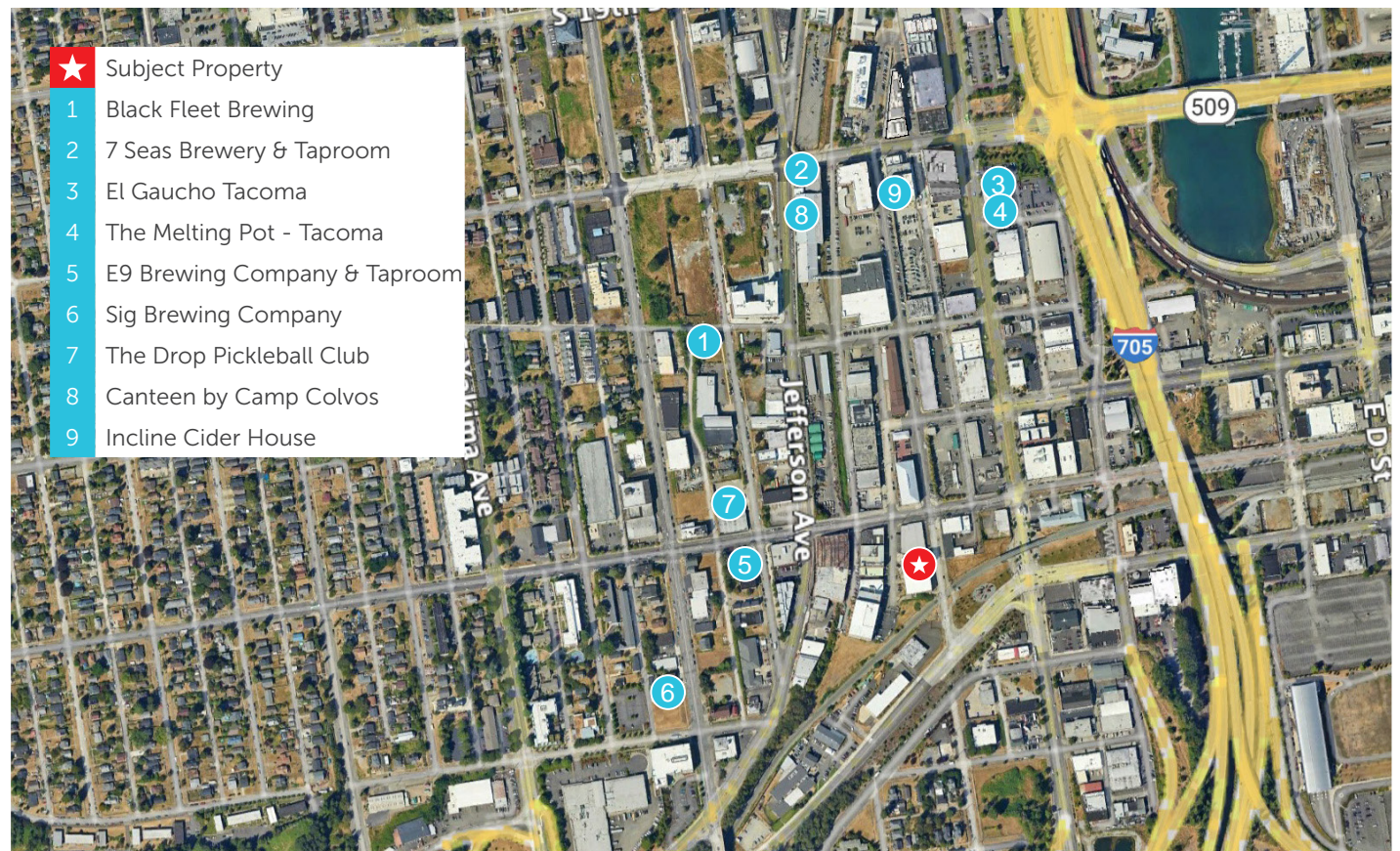
CAMERON VALENTINE
253.779.2427

cvalentine@neilwalter.com

All information references in this document are approximate. The information contained herein is contained from sources deemed reliable. It is provided without representation, warranty, or guarantee, expressed or implied as to accuracy. Prospective buyer or tenant should conduct its own independent investigation relating to the property, government codes and regulations, allowed uses, and all other matters, regardless of whether they are referred to or contained in this document.

BREWERY TOWER BUILDING

2509-2515 S HOLGATE ST | TACOMA, WA



JOEL JONES

253.779.2422

jjones@neilwalter.com

CAMERON VALENTINE

253.779.2427

cvalentine@neilwalter.com

1940 East D St, #100

Tacoma, WA 98421

253.779.8400

www.neilwalter.com

All information references in this document are approximate. The information contained herein is contained from sources deemed reliable. It is provided without representation, warranty, or guarantee, expressed or implied as to accuracy. Prospective buyer or tenant should conduct its own independent investigation relating to the property, government codes and regulations, allowed uses, and all other matters, regardless of whether they are referred to or contained in this document.

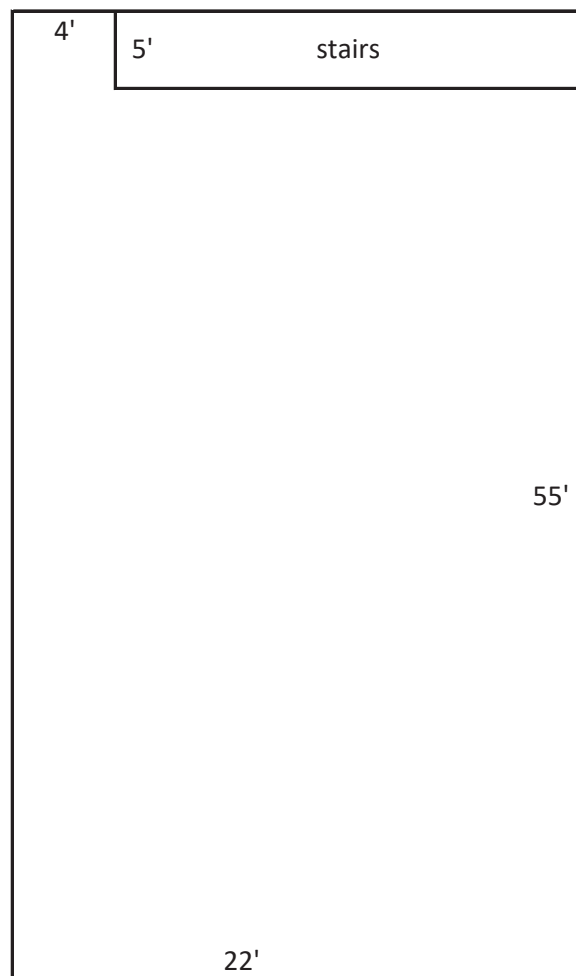
BREWERY TOWER BUILDING

2509-2515 S HOLGATE ST | TACOMA, WA

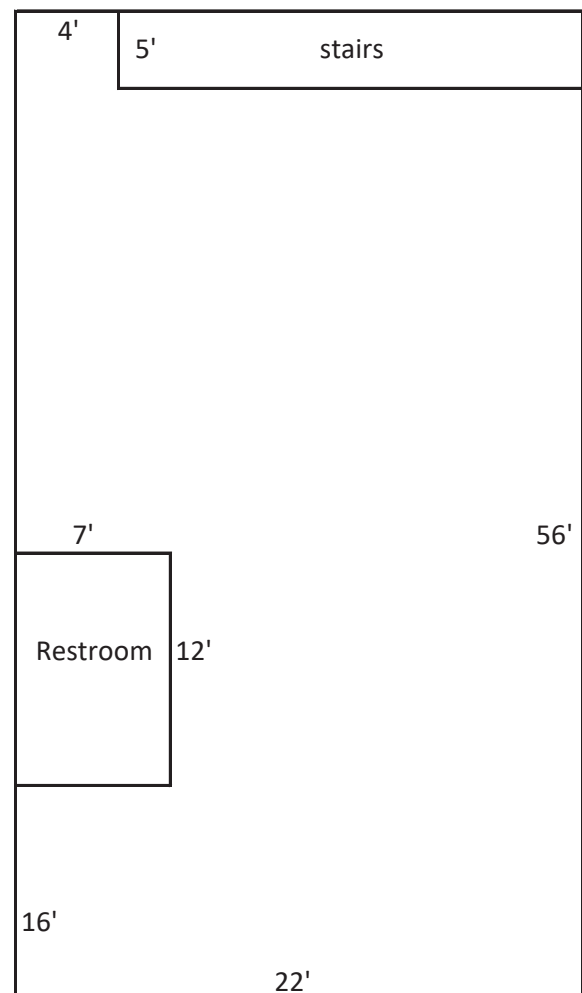


FLOOR PLANS

2nd Floor
10' Clear
+/- 1,230 SF



1st Floor
10' clear
+/- 1,252 SF



JOEL JONES
253.779.2422
jjones@neilwalter.com

CAMERON VALENTINE
253.779.2427
cvalentine@neilwalter.com

1940 East D St, #100
Tacoma, WA 98421
253.779.8400
www.neilwalter.com

All information references in this document are approximate. The information contained herein is contained from sources deemed reliable. It is provided without representation, warranty, or guarantee, expressed or implied as to accuracy. Prospective buyer or tenant should conduct its own independent investigation relating to the property, government codes and regulations, allowed uses, and all other matters, regardless of whether they are referred to or contained in this document.

BREWERY TOWER BUILDING

2509-2515 S HOLGATE ST | TACOMA, WA



NEIL WALTER
COMPANY



JOEL JONES
253.779.2422
jjones@neilwalter.com

CAMERON VALENTINE
253.779.2427
cvalentine@neilwalter.com

1940 East D St, #100
Tacoma, WA 98421
253.779.8400
www.neilwalter.com

All information references in this document are approximate. The information contained herein is contained from sources deemed reliable. It is provided without representation, warranty, or guarantee, expressed or implied as to accuracy. Prospective buyer or tenant should conduct its own independent investigation relating to the property, government codes and regulations, allowed uses, and all other matters, regardless of whether they are referred to or contained in this document.