

# KRESS BUILDING

934 BROADWAY | TACOMA, WA

FOR LEASE: 4 UNITS AVAILABLE / 510 RSF - 2,632 RSF

## GREAT LOCATION IN TACOMA'S CENTRAL BUSINESS DISTRICT



### LEASE INFORMATION

<b>Size Range:</b>	510 - 2,632 RSF
<b>Lease Rate:</b>	\$24.00/SF/YR
<b>Lease Type:</b>	Gross
<b>Available:</b>	Now

Flexible length lease terms

### PROPERTY HIGHLIGHTS

- Located on Broadway in the center of the Farmer's Market
- New updated electrical, HVAC, lighting, restrooms, and office finishes
- Park and transportation hub across the street
- Secured parking available



**ERIC CEDERSTRAND**  
253.779.2428  
ecederstrand@neilwalter.com

**JOHN DEHAN**  
253.779.2433  
jdehan@neilwalter.com

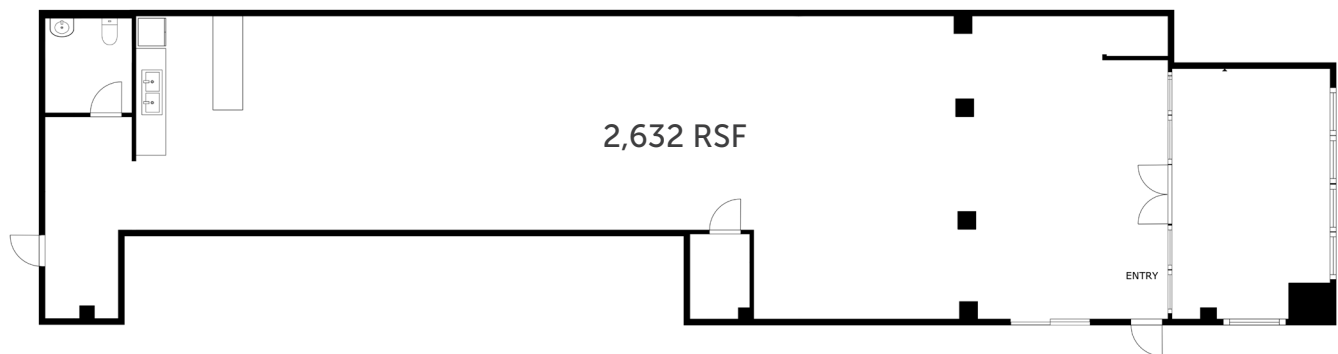
All information references in this document are approximate. The information contained herein is contained from sources deemed reliable. It is provided without representation, warranty, or guarantee, expressed or implied as to accuracy. Prospective buyer or tenant should conduct its own independent investigation relating to the property, government codes and regulations, allowed uses, and all other matters, regardless of whether they are referred to or contained in this document.

# KRESS BUILDING

934 BROADWAY | TACOMA, WA



## STREET FRONTAGE OFFICE



**ERIC CEDERSTRAND**

253.779.2428

[ecederstrand@neilwalter.com](mailto:ecederstrand@neilwalter.com)

**JOHN DEHAN**

253.779.2433

[jdehan@neilwalter.com](mailto:jdehan@neilwalter.com)

1940 East D St, #100  
Tacoma, WA 98421

253.779.8400  
[www.neilwalter.com](http://www.neilwalter.com)



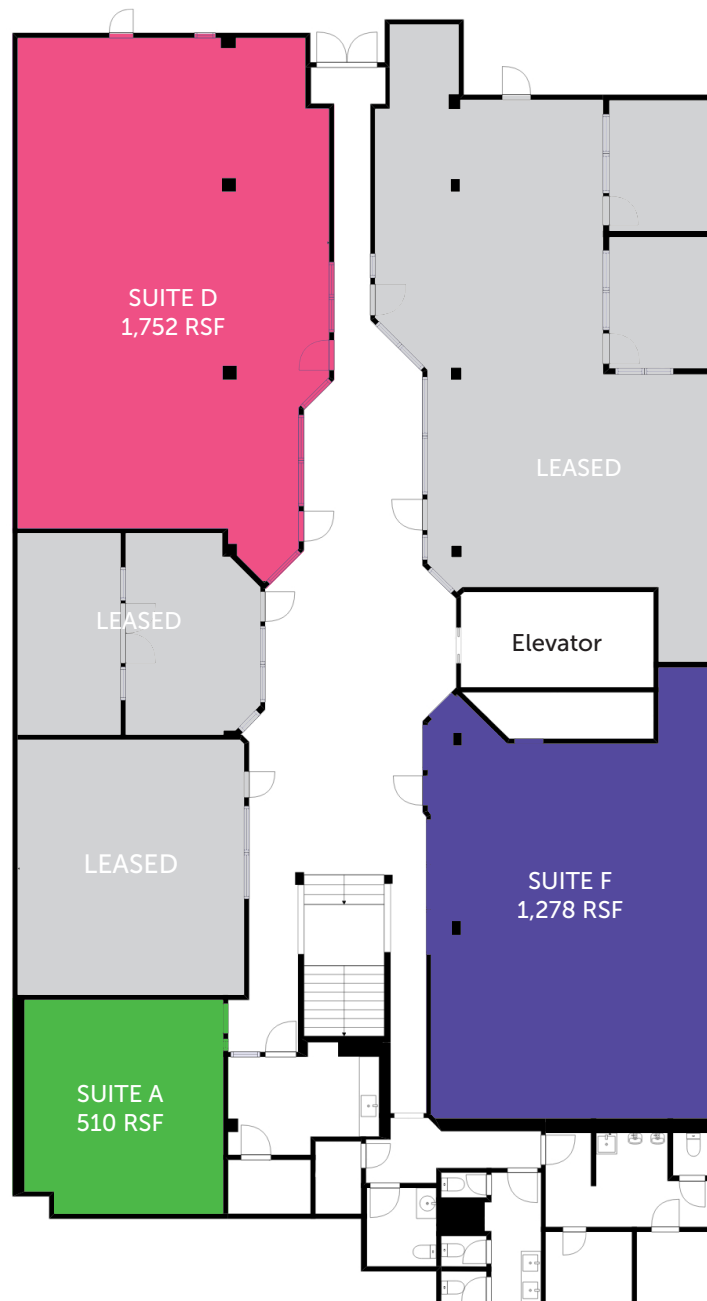
# KRESS BUILDING

934 BROADWAY | TACOMA, WA



NEIL WALTER  
COMPANY

## ATRIUM SUITES



**ERIC CEDERSTRAND**

253.779.2428

[ecederstrand@neilwalter.com](mailto:ecederstrand@neilwalter.com)

**JOHN DEHAN**

253.779.2433

[jdehan@neilwalter.com](mailto:jdehan@neilwalter.com)

1940 East D St, #100  
Tacoma, WA 98421

253.779.8400  
[www.neilwalter.com](http://www.neilwalter.com)

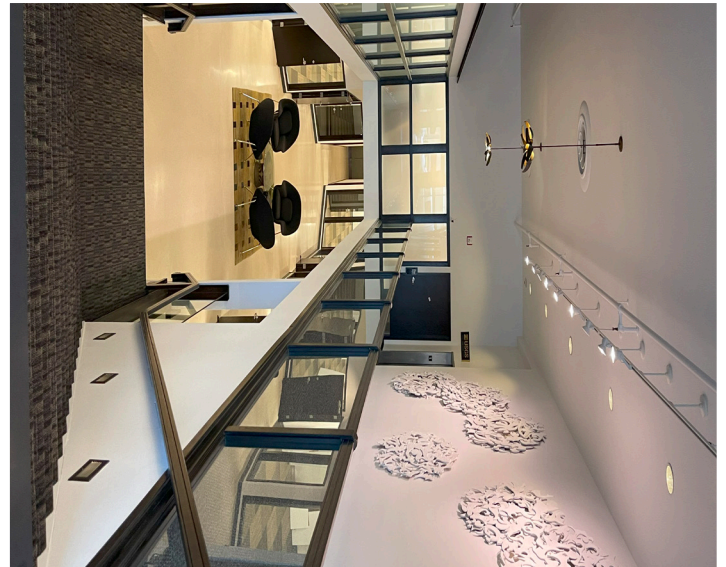
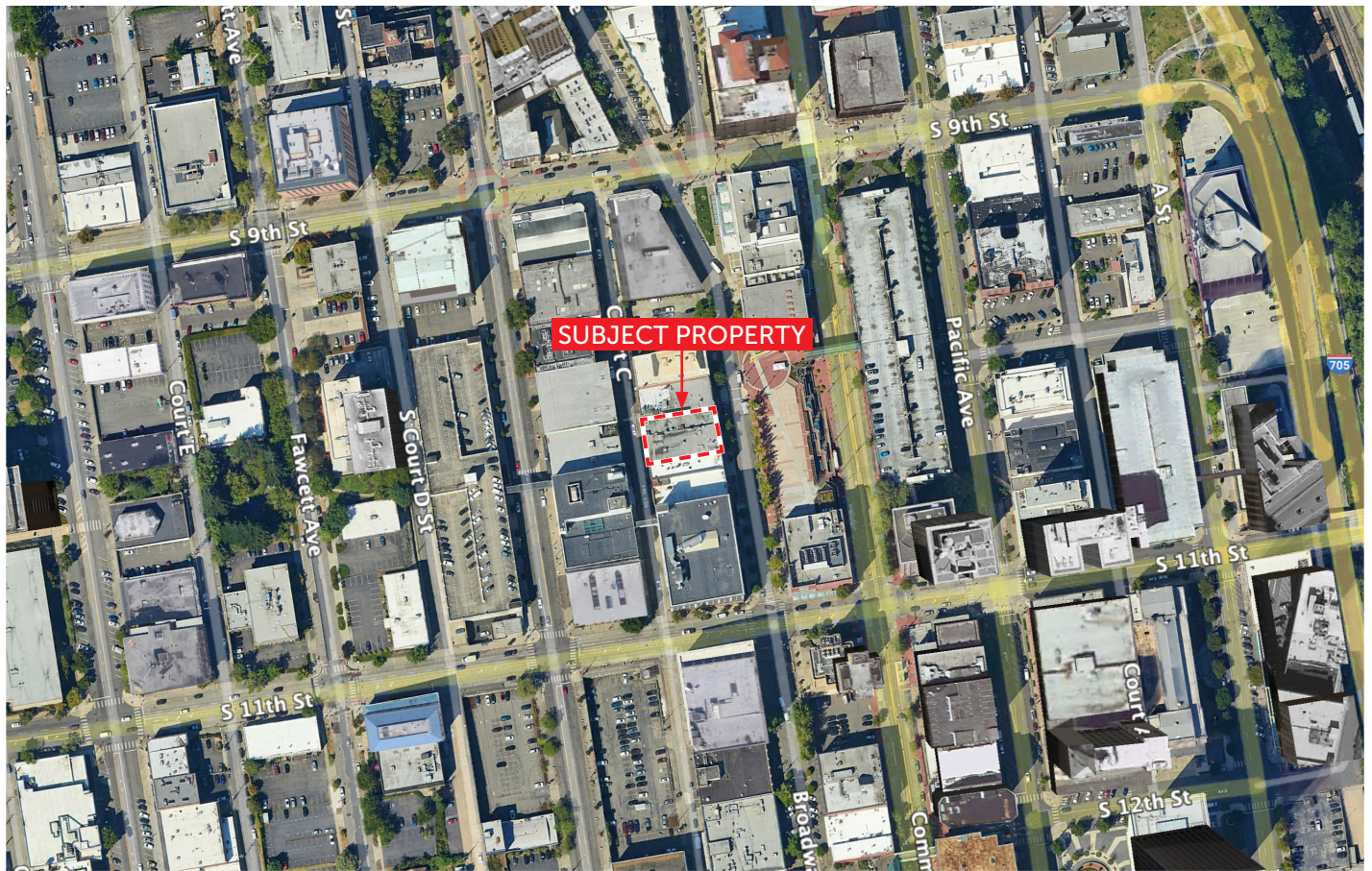


# KRESS BUILDING

934 BROADWAY | TACOMA, WA



NEIL WALTER  
COMPANY



NEIL WALTER  
COMPANY

**ERIC CEDERSTRAND**

253.779.2428

[ecederstrand@neilwalter.com](mailto:ecederstrand@neilwalter.com)

**JOHN DEHAN**

253.779.2433

[jdehan@neilwalter.com](mailto:jdehan@neilwalter.com)

1940 East D St, #100  
Tacoma, WA 98421

253.779.8400  
[www.neilwalter.com](http://www.neilwalter.com)