

LYDIG BUSINESS PARK

FOR LEASE - 5,062 SF

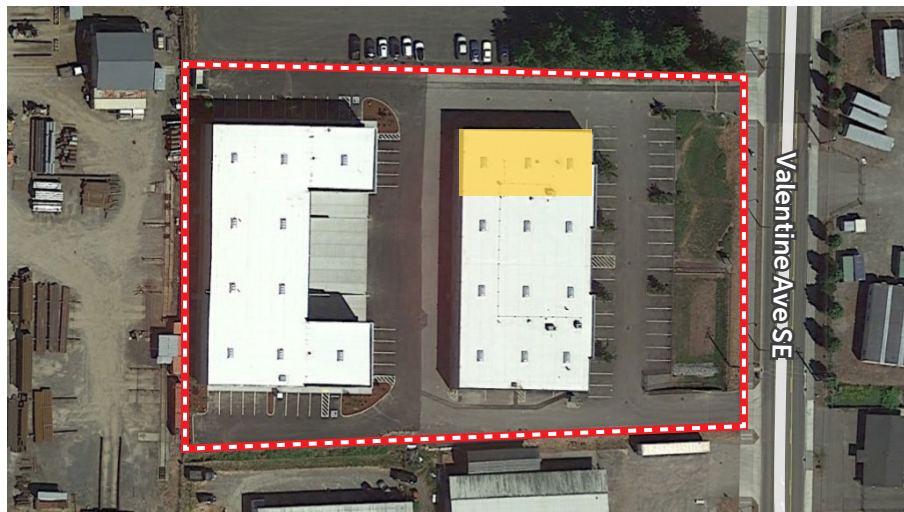
828 VALENTINE AVE SE | PACIFIC, WA 98047

CLASS A INDUSTRIAL SPACE



LEASE INFORMATION

Available Size:	5,062 SF Total
Office:	1,562 SF
Loading:	2 GL (oversized)
Clear Height:	24'
Lease Rate:	\$1.08/SF Shell \$1.35/SF Office "Add-On"
NNN Rate:	\$0.402/SF/Month
Available:	8/1/2025



PROPERTY HIGHLIGHTS

Corner Unit

Frontage on Valentine Ave

Ample Parking



KERMIT JORGENSEN
206.787.1475
kjorgensen@neilwalter.com

JOHN BLEDSOE
206.787.1460
jbledsoe@neilwalter.com

MICHAEL ROY
206.940.7199
michael.roy@kbcadvisors.com



All information references in this document are approximate. The information contained herein is contained from sources deemed reliable. It is provided without representation, warranty, or guarantee, expressed or implied as to accuracy. Prospective buyer or tenant should conduct its own independent investigation relating to the property, government codes and regulations, allowed uses, and all other matters, regardless of whether they are referred to or contained in this document.

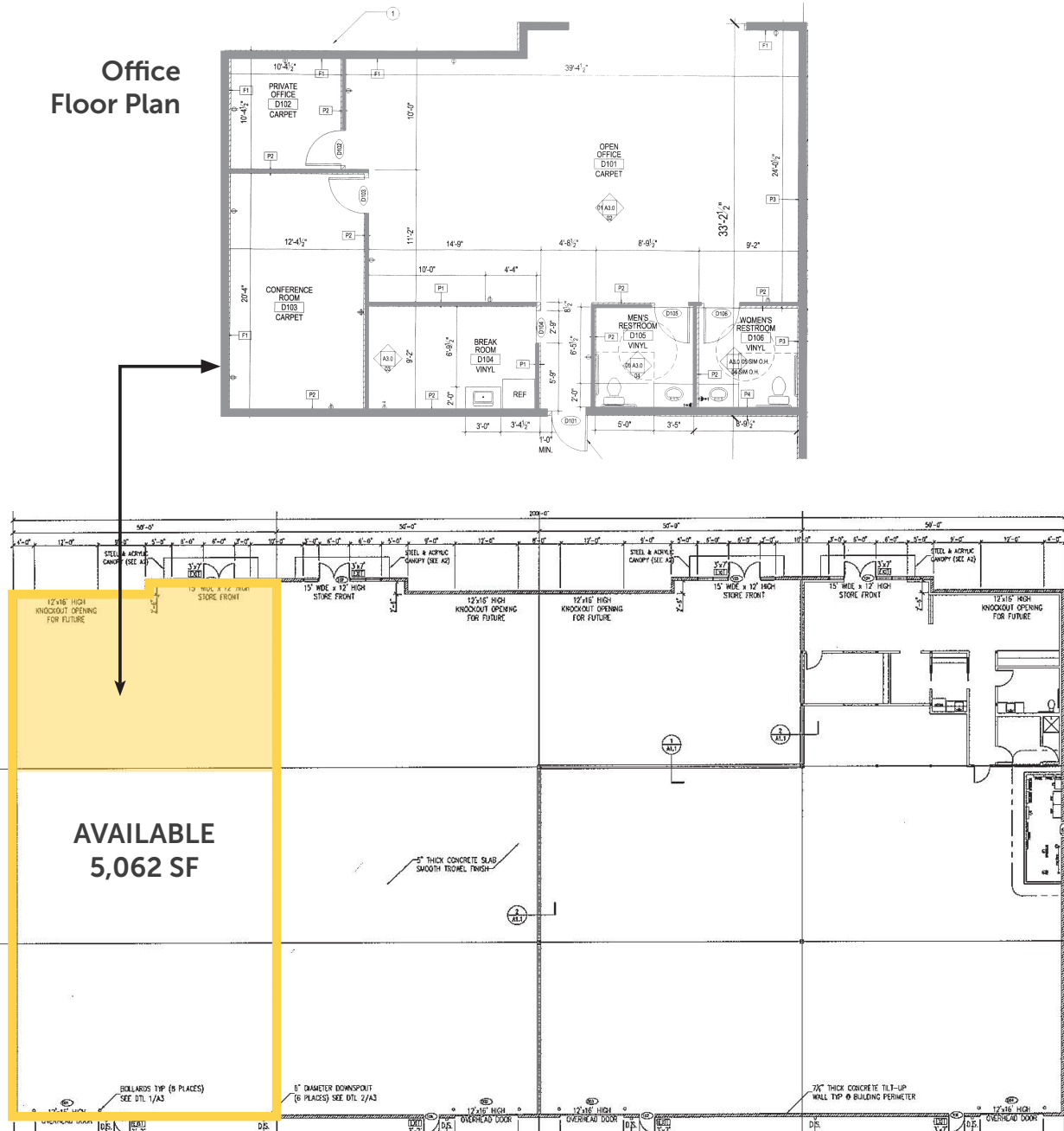
LYDIG BUSINESS PARK

828 VALENTINE AVE SE | PACIFIC, WA 98047



NEIL WALTER
COMPANY

Office
Floor Plan



KERMIT JORGENSEN
206.787.1475
kjorgensen@neilwalter.com

JOHN BLEDSOE
206.787.1460
jbledsoe@neilwalter.com

MICHAEL ROY
206.940.7199
michael.roy@kbcadvisors.com

