

# LYDIG BUSINESS PARK

FOR LEASE: 20,000 SF TOTAL

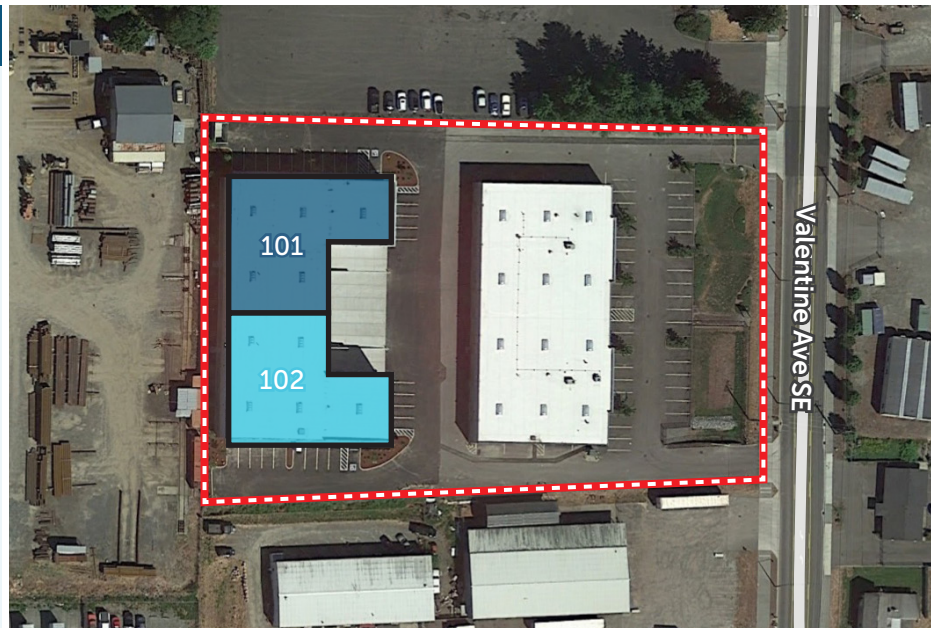
830 VALENTINE AVE SE | PACIFIC, WA 98047

## CLASS A INDUSTRIAL SPACE



### LEASE INFORMATION

Total Size:	20,000 SF
Divisible To:	9,900 SF (Unit 102) 10,100 SF (Unit 101)
Office:	Restrooms in warehouse Break counter w/sink BTS office available
Loading:	2 DH & 1 GL (Unit 101) 2 DH & 1 GL (Unit 102)
Clear Height:	24'
Lease Rate:	Call Broker
Available:	Unit 101 Available Now Unit 102 Available 1/1/2027



**KERMIT JORGENSEN**  
206.787.1475  
kjorgensen@neilwalter.com

**MICHAEL ROY**  
206.940.7199  
michael.roy@kbcadvisors.com



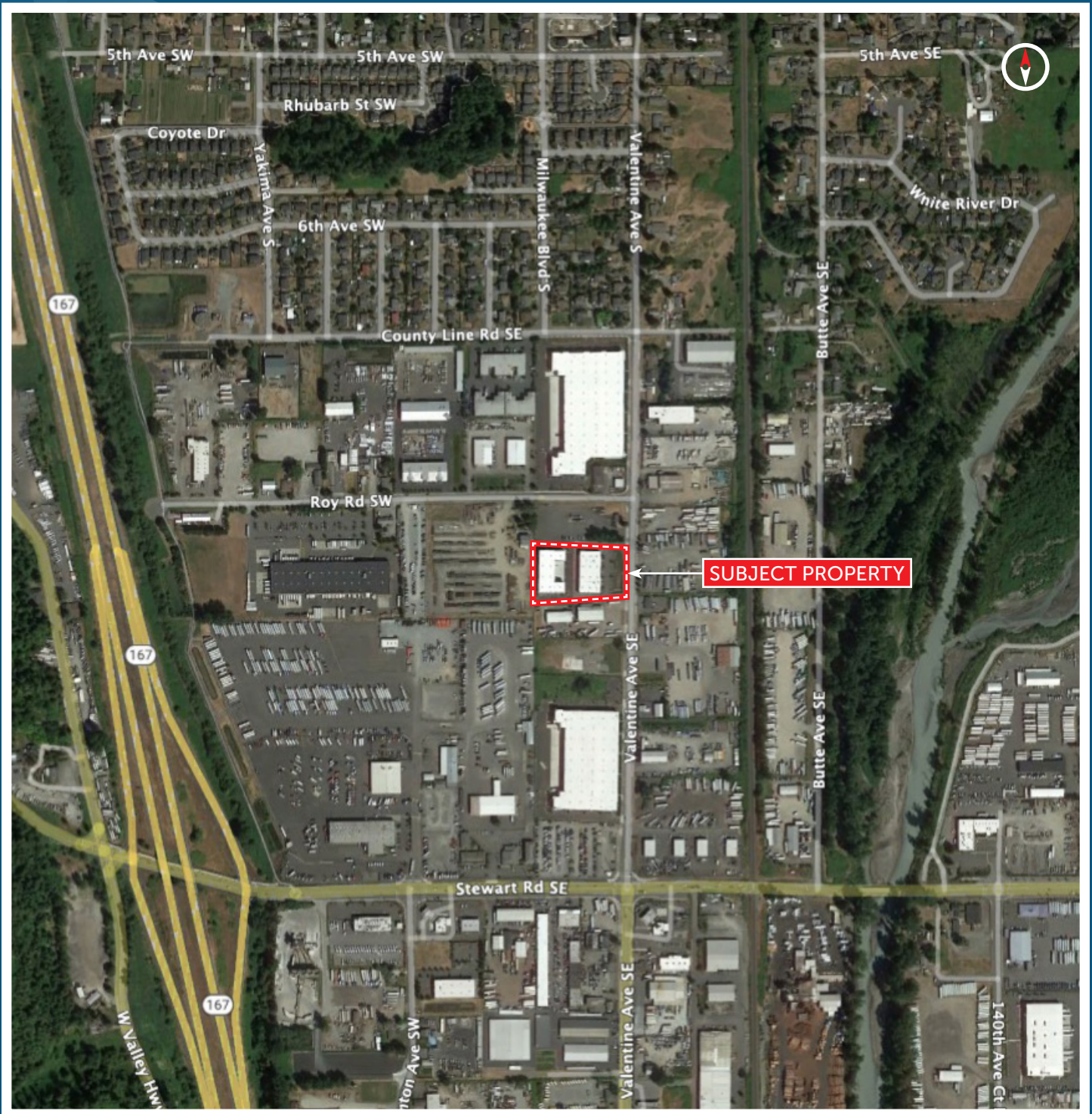
All information references in this document are approximate. The information contained herein is contained from sources deemed reliable. It is provided without representation, warranty, or guarantee, expressed or implied as to accuracy. Prospective buyer or tenant should conduct its own independent investigation relating to the property, government codes and regulations, allowed uses, and all other matters, regardless of whether they are referred to or contained in this document.

# LYDIG BUSINESS PARK

830 VALENTINE AVE SE | PACIFIC, WA 98047



NEIL WALTER  
COMPANY



**KERMIT JORGENSEN**  
206.787.1475  
kjorgensen@neilwalter.com

**MICHAEL ROY**  
206.940.7199  
michael.roy@kbcadvisors.com



All information references in this document are approximate. The information contained herein is contained from sources deemed reliable. It is provided without representation, warranty, or guarantee, expressed or implied as to accuracy. Prospective buyer or tenant should conduct its own independent investigation relating to the property, government codes and regulations, allowed uses, and all other matters, regardless of whether they are referred to or contained in this document.