

# WESTGATE TERRACE OFFICE PARK

2102 N PEARL ST | TACOMA, WA

FOR LEASE - 2,937 SF

## PROFESSIONAL SUBURBAN OFFICE SPACE

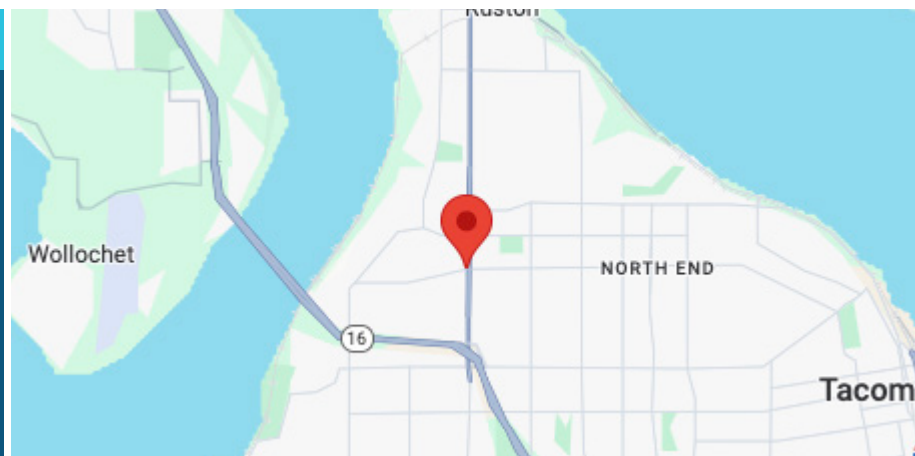


## LEASE INFORMATION

Building	Suite	Size	Lease Rate	Lease Type	Available
D	400	2,937 SF	\$28/SF/Year	Modified Gross	7/1/2025

## PROPERTY FEATURES

- Professional office park
- Excellent access to all of Pierce County
- Exceptional exposure
- Ample Parking
- Professionally managed
- All utilities included



**CHRIS HIGHSMITH**  
253.779.2402

chighsmith@neilwalter.com

**BRIANA HICKEY**  
253.779.2424

bhickey@neilwalter.com

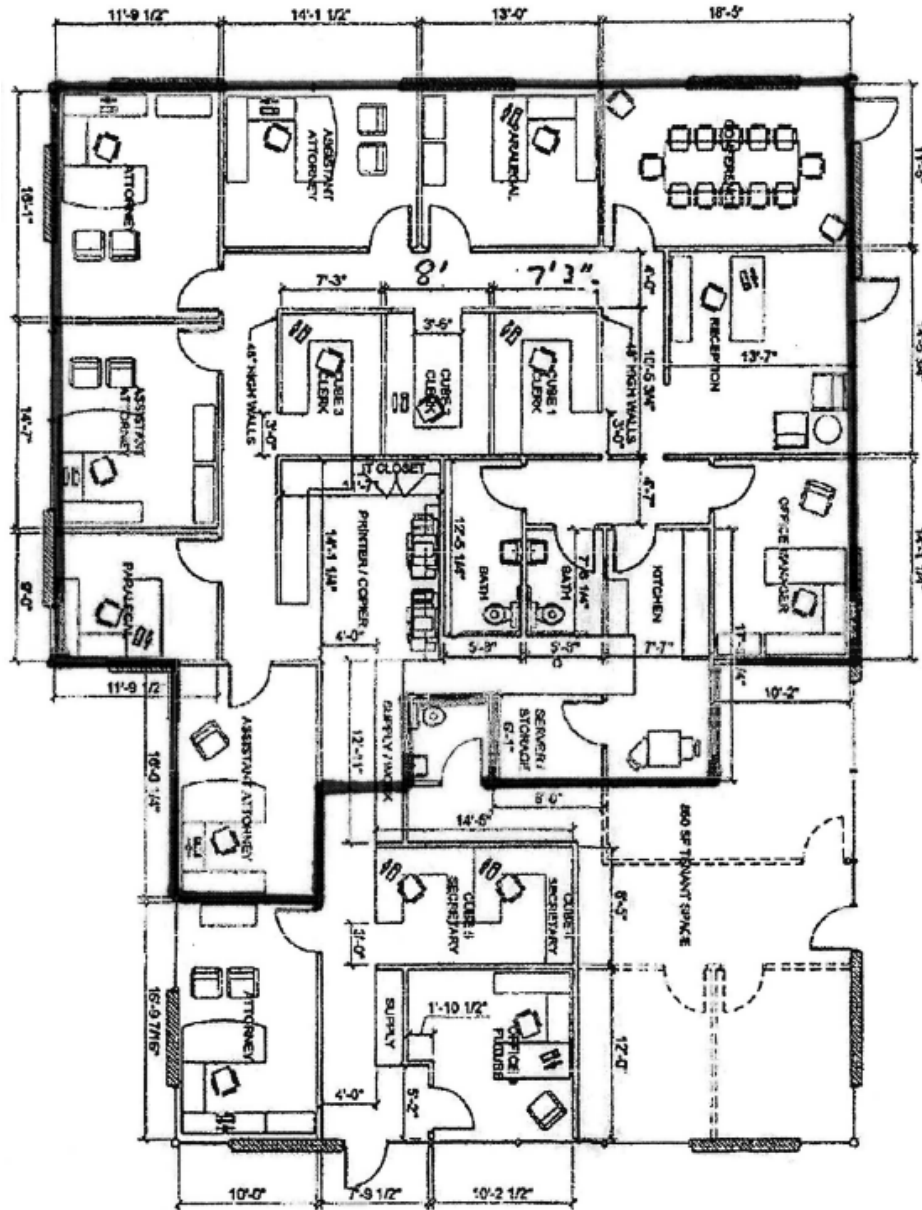
All information references in this document are approximate. The information contained herein is contained from sources deemed reliable. It is provided without representation, warranty, or guarantee, expressed or implied as to accuracy. Prospective buyer or tenant should conduct its own independent investigation relating to the property, government codes and regulations, allowed uses, and all other matters, regardless of whether they are referred to or contained in this document.

# WESTGATE TERRACE OFFICE PARK

2102 N PEARL ST | TACOMA, WA



## SUITE 400



**CHRIS HIGHSMITH**  
253.779.2402  
chighsmith@neilwalter.com

**BRIANA HICKEY**  
253.779.2424  
bhickey@neilwalter.com

1940 East D St, #100  
Tacoma, WA 98421  
253.779.8400  
[www.neilwalter.com](http://www.neilwalter.com)

All information references in this document are approximate. The information contained herein is contained from sources deemed reliable. It is provided without representation, warranty, or guarantee, expressed or implied as to accuracy. Prospective buyer or tenant should conduct its own independent investigation relating to the property, government codes and regulations, allowed uses, and all other matters, regardless of whether they are referred to or contained in this document.