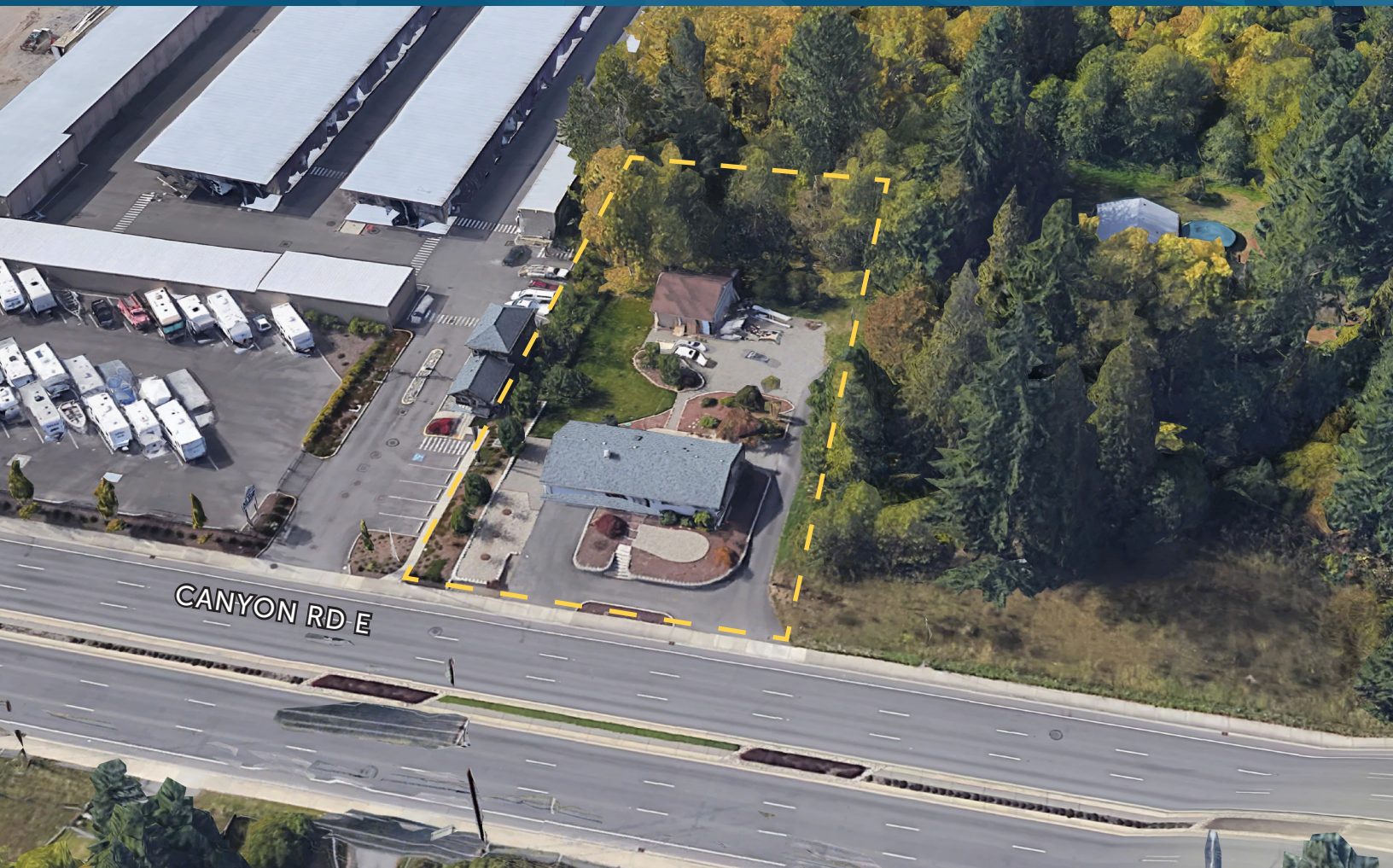


SHOP WITH YARD

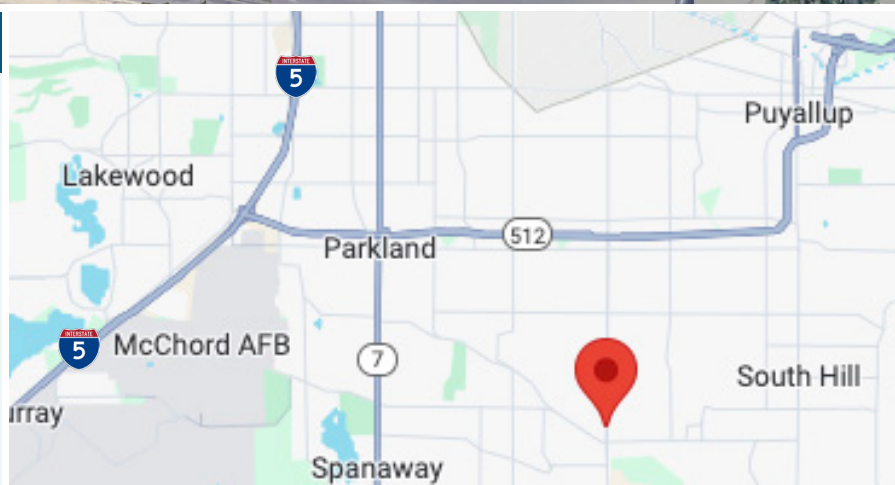
FOR SALE: \$750,000

15422 CANYON RD E | UNINCORPORATED PIERCE COUNTY, WA 98375



SALE INFORMATION

Building Size:	2,372 SF Total 1,647 SF Office with Shop 725 SF Shop
Land Size:	0.8 Acres (34,848 SF)
Year Built:	1980
Features:	Office & Yard Area
Zoning:	EC - Employment Corridor
Sale Price:	\$750,000



JOEL JONES

253.779.2422

jjones@neilwalter.com

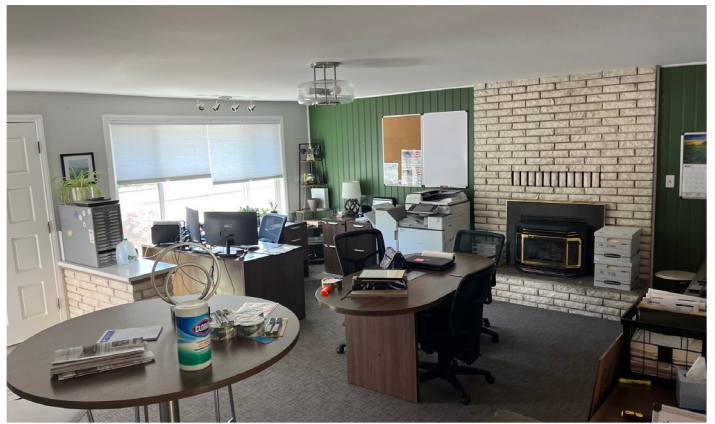
All information references in this document are approximate. The information contained herein is contained from sources deemed reliable. It is provided without representation, warranty, or guarantee, expressed or implied as to accuracy. Prospective buyer or tenant should conduct its own independent investigation relating to the property, government codes and regulations, allowed uses, and all other matters, regardless of whether they are referred to or contained in this document.

SHOP WITH YARD

15422 CANYON RD E | UNINCORPORATED PIERCE COUNTY, WA 98375



NEIL WALTER
COMPANY



JOEL JONES

253.779.2422

jjones@neilwalter.com

1940 East D St #100

Tacoma, WA 98421

253.779.8400

www.neilwalter.com

All information references in this document are approximate. The information contained herein is contained from sources deemed reliable. It is provided without representation, warranty, or guarantee, expressed or implied as to accuracy. Prospective buyer or tenant should conduct its own independent investigation relating to the property, government codes and regulations, allowed uses, and all other matters, regardless of whether they are referred to or contained in this document.