

FOR LEASE

FORMER CARLSON FORMETEC / AERO PRECISION BUILDING

2202-2212 A ST | TACOMA, WA

HEAVY DUTY MANUFACTURING / FABRICATION / WAREHOUSE STORAGE

BACK ON THE MARKET!



LEASE INFORMATION

Shell Size:	27,000 SF
Office Size:	Build-to-suit
Fenced Yard:	Approx. 8,000 SF
Clear Height:	12' to bottom of beams
Lease Rate:	\$18,000 per month + NNN
Zoning:	Warehouse/Residential (WR)

PROPERTY HIGHLIGHTS

- 2 grade level doors & 1 dock high (not a standard 40")
- Heavy 3 phase power | 1,600+ amps
- Tenant improvement allowance provided
- Building was formerly occupied by Carlson Formetec Inc. for aerospace manufacturing, followed by Aero Precision CNC machines
- Wide open clearspan



JOHN DEHAN
253.779.2433
jdehan@neilwalter.com

ERIC CEDERSTRAND
253.779.7199
ecederstrand@neilwalter.com

All information references in this document are approximate. The information contained herein is contained from sources deemed reliable. It is provided without representation, warranty, or guarantee, expressed or implied as to accuracy. Prospective buyer or tenant should conduct its own independent investigation relating to the property, government codes and regulations, allowed uses, and all other matters, regardless of whether they are referred to or contained in this document.

FORMER CARLSON FORMETEC / AERO PRECISION BUILDING

2202-2212 A ST | TACOMA, WA



NEIL WALTER
COMPANY



JOHN DEHAN
253.779.2433
jdehan@neilwalter.com

ERIC CEDERSTRAND
253.779.2428
ecederstrand@neilwalter.com

1940 East D St #100
Tacoma, WA 98421
253.779.8400
www.neilwalter.com

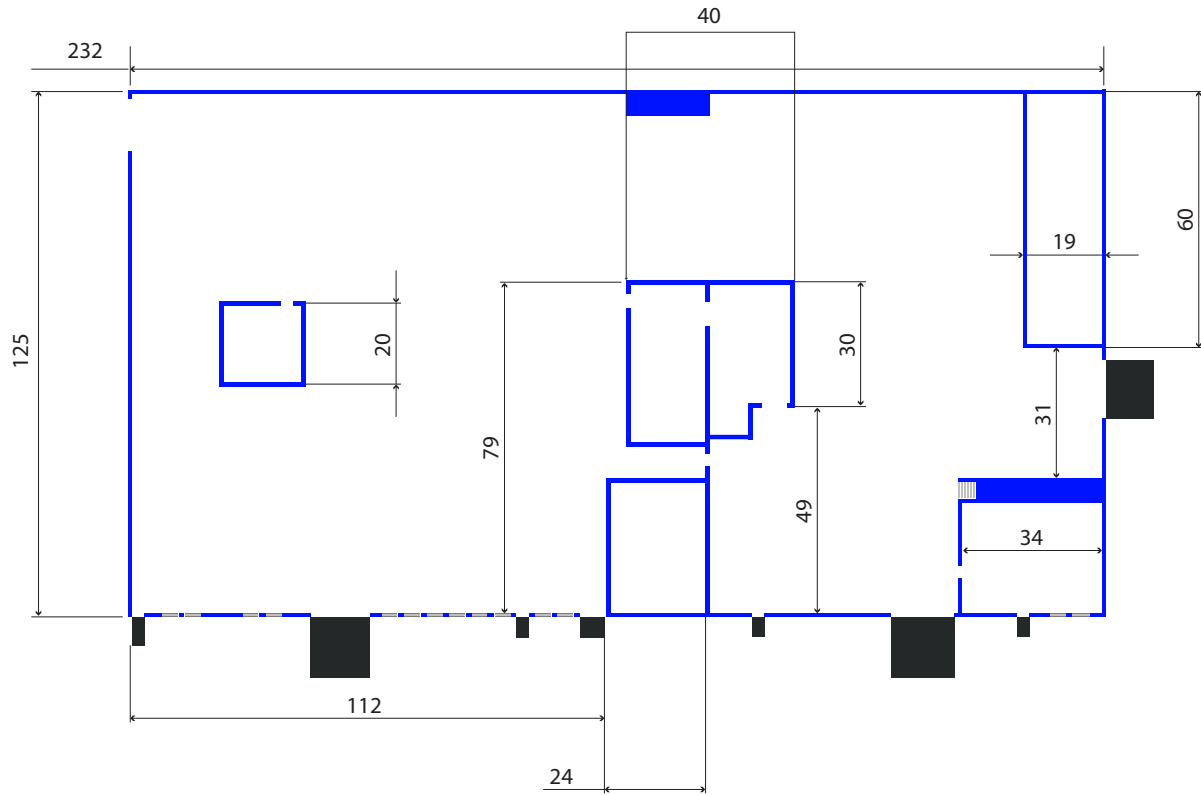
All information references in this document are approximate. The information contained herein is contained from sources deemed reliable. It is provided without representation, warranty, or guarantee, expressed or implied as to accuracy. Prospective buyer or tenant should conduct its own independent investigation relating to the property, government codes and regulations, allowed uses, and all other matters, regardless of whether they are referred to or contained in this document.

FORMER CARLSON FORMETEC / AERO PRECISION BUILDING

2202-2212 A ST | TACOMA, WA



NEIL WALTER
COMPANY



JOHN DEHAN
253.779.2433
jdehan@neilwalter.com

ERIC CEDERSTRAND
253.779.2428
ecederstrand@neilwalter.com

1940 East D St #100
Tacoma, WA 98421
253.779.8400
www.neilwalter.com

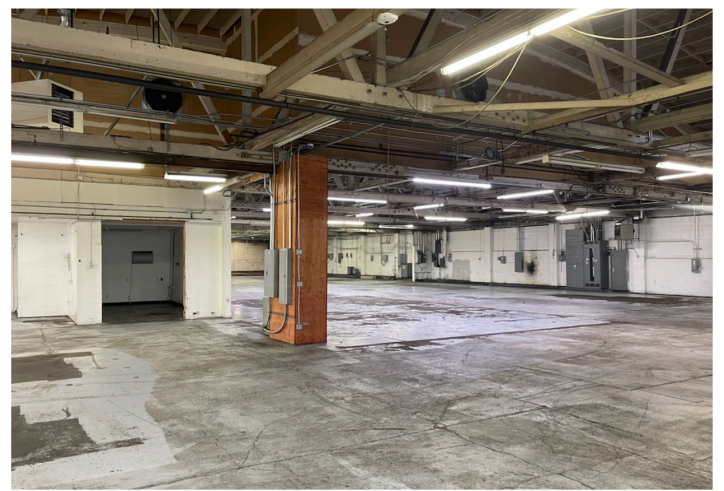
All information references in this document are approximate. The information contained herein is contained from sources deemed reliable. It is provided without representation, warranty, or guarantee, expressed or implied as to accuracy. Prospective buyer or tenant should conduct its own independent investigation relating to the property, government codes and regulations, allowed uses, and all other matters, regardless of whether they are referred to or contained in this document.

FORMER CARLSON FORMETEC / AERO PRECISION BUILDING

2202-2212 A ST | TACOMA, WA



NEIL WALTER
COMPANY



JOHN DEHAN
253.779.2433
jdehan@neilwalter.com

ERIC CEDERSTRAND
253.779.2428
ecederstrand@neilwalter.com

1940 East D St #100
Tacoma, WA 98421
253.779.8400
www.neilwalter.com

All information references in this document are approximate. The information contained herein is contained from sources deemed reliable. It is provided without representation, warranty, or guarantee, expressed or implied as to accuracy. Prospective buyer or tenant should conduct its own independent investigation relating to the property, government codes and regulations, allowed uses, and all other matters, regardless of whether they are referred to or contained in this document.