

LYDIG BUSINESS PARK

FOR LEASE: 20,000 SF TOTAL

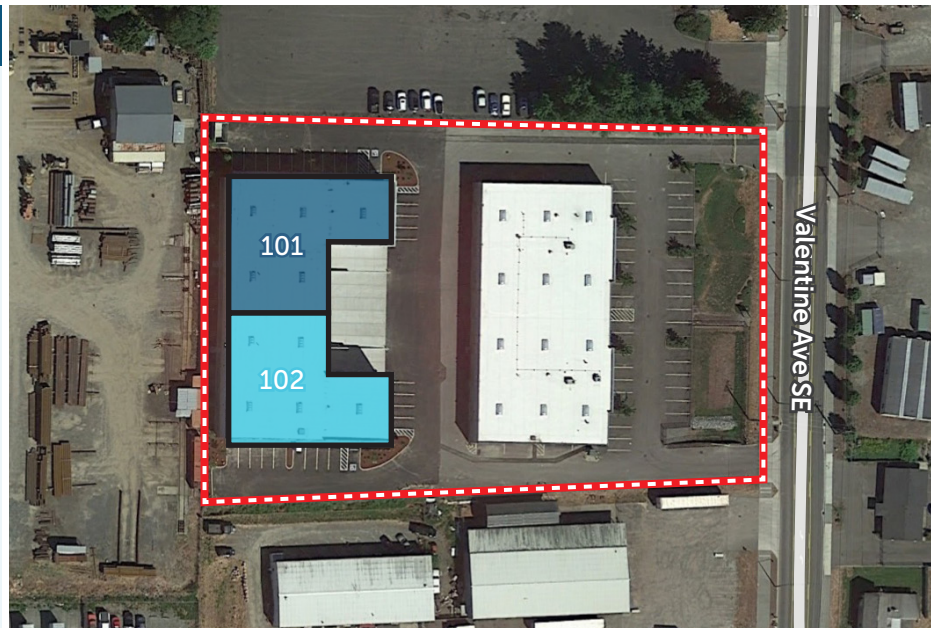
830 VALENTINE AVE SE | PACIFIC, WA 98047

CLASS A INDUSTRIAL SPACE



LEASE INFORMATION

Total Size:	20,000 SF
Divisible To:	9,900 SF (Unit 102) 10,100 SF (Unit 101)
Office:	Restrooms in warehouse Break counter w/sink BTS office available
Loading:	2 DH & 1 GL (Unit 101) 2 DH & 1 GL (Unit 102)
Clear Height:	24'
Lease Rate:	Call Broker
Available:	Unit 101 Available Now Unit 102 Available 1/1/2027



KERMIT JORGENSEN
206.787.1475
kjorgensen@neilwalter.com

JOHN BLEDSOE
206.787.1460
jbledsoe@neilwalter.com

MICHAEL ROY
206.940.7199
michael.roy@kbcadvisors.com



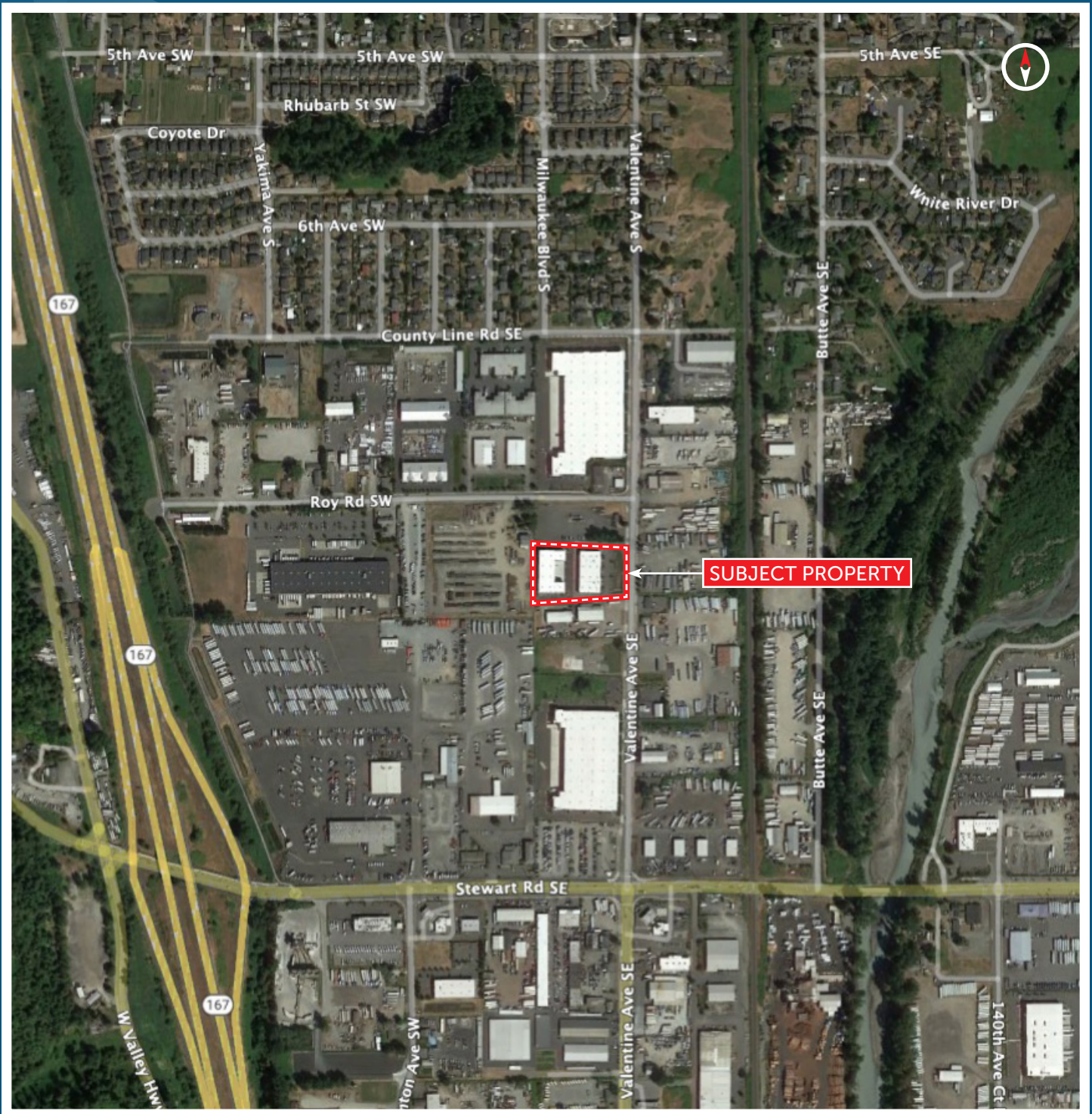
All information references in this document are approximate. The information contained herein is contained from sources deemed reliable. It is provided without representation, warranty, or guarantee, expressed or implied as to accuracy. Prospective buyer or tenant should conduct its own independent investigation relating to the property, government codes and regulations, allowed uses, and all other matters, regardless of whether they are referred to or contained in this document.

LYDIG BUSINESS PARK

830 VALENTINE AVE SE | PACIFIC, WA 98047



NEIL WALTER
COMPANY



KERMIT JORGENSEN
206.787.1475
kjorgensen@neilwalter.com

JOHN BLEDSOE
206.787.1460
jbledsoe@neilwalter.com

MICHAEL ROY
206.940.7199
michael.roy@kbcadvisors.com



All information references in this document are approximate. The information contained herein is contained from sources deemed reliable. It is provided without representation, warranty, or guarantee, expressed or implied as to accuracy. Prospective buyer or tenant should conduct its own independent investigation relating to the property, government codes and regulations, allowed uses, and all other matters, regardless of whether they are referred to or contained in this document.